

# **ICD-10-CM Expert for Skilled Nursing Facilities and Inpatient Rehabilitation Facilities**

**The complete official guidelines and code set**  
Codes valid from October 1, 2025  
through September 30, 2026

# Contents

|  |                            |  |                        |
|--|----------------------------|--|------------------------|
| <b>How to Use ICD-10-CM Expert for Skilled Nursing Facilities and Inpatient Rehabilitation Facilities 2026</b> .....           | <b>iii</b>                 | Chapter 11. Diseases of the Digestive System (K00-K95) .....   | 727                    |
| Introduction .....   | iii                        | Chapter 12. Diseases of the Skin and Subcutaneous Tissue (L00-L99) .....   | 755                    |
| What's New for 2026 .....  | iii                        | Chapter 13. Diseases of the Musculoskeletal System and Connective Tissue (M00-M99) .....                                       | 779                    |
| Conversion Table .....   | iii                        | Chapter 14. Diseases of Genitourinary System (N00-N99) .....   | 871                    |
| 10 Steps to Correct Coding .....   | iii                        | Chapter 15. Pregnancy, Childbirth, and the Puerperium (O00-O9A) .....  | 893                    |
| Official ICD-10-CM Guidelines for Coding and Reporting .....   | iii                        | Chapter 16. Certain Conditions Originating in the Perinatal Period (P00-P96) .....   | 933                    |
| Indexes .....  | iii                        | Chapter 17. Congenital Malformations, Deformations, and Chromosomal Abnormalities (Q00-Q99) .....                              | 947                    |
| Index to Diseases and Injuries .....   | iii                        | Chapter 18. Symptoms, Signs, and Abnormal Clinical and Laboratory Findings, Not Elsewhere Classified (R00-R99) .....           | 969                    |
| Neoplasm Table.....  | iii                        | Chapter 19. Injury, Poisoning, and Certain Other Consequences of External Causes (S00-T88) .....                               | 991                    |
| Table of Drugs and Chemicals .....   | iv                         | Chapter 20. External Causes of Morbidity (V00-Y99) .....   | 1199                   |
| External Causes Index .....  | iv                         | Chapter 21. Factors Influencing Health Status and Contact with Health Services (Z00-Z99) .....                                 | 1267                   |
| Index Notations .....  | iv                         | Chapter 22. Codes for Special Purposes (U00-U85).....  | 1307                   |
| Tabular List of Diseases .....   | v                          | <b>Appendixes</b> .....  | <b>Appendixes-1</b>    |
| Code and Code Descriptions.....  | v                          | Appendix A: Valid 3-character ICD-10-CM Codes.....   | Appendixes-1           |
| Tabular Notations .....  | v                          | Appendix B: Pharmacology List 2026.....  | Appendixes-3           |
| Official Notations .....   | v                          | Appendix C: Z Codes for Long-Term Drug Use with Associated Drugs .....   | Appendixes-18          |
| Optum Notations .....  | vi                         | Appendix D: Skilled Nursing Facility Patient-Driven Payment Model .....  | Appendixes-20          |
| Icons .....  | vi                         | Appendix E: PDPM Comorbid Conditions.....  | Appendixes-23          |
| Color Bars .....   | vii                        | Appendix F: PDPM Return-to-Provider Code List .....  | Appendixes-26          |
| Chapter-Level Notations .....  | viii                       | Appendix G: Skilled Nursing Facility Active Diagnosis List.....  | Appendixes-32          |
| Appendixes .....   | viii                       | Appendix H: IRF Impairment Group Codes .....   | Appendixes-34          |
| Illustrations.....   | viii                       | Appendix I: IRF Comorbid Conditions.....   | Appendixes-39          |
| <b>What's New for 2026</b> .....   | <b>ix</b>                  | Appendix J: Coding Issues for Long-Term Care (LTC).....  | Appendixes-45          |
| Official Updates .....   | ix                         | <b>Illustrations</b> .....   | <b>Illustrations-1</b> |
| Proprietary Updates .....  | ix                         | Chapter 3. Diseases of the Blood and Blood-forming Organs and Certain Disorders Involving the Immune Mechanism (D50-D89) ..... | Illustrations-1        |
| <b>Conversion Table of ICD-10-CM Codes</b> .....   | <b>x</b>                   | Red Blood Cells .....  | Illustrations-1        |
| <b>10 Steps to Correct Coding</b> .....  | <b>xii</b>                 | White Blood Cell .....   | Illustrations-1        |
| <b>ICD-10-CM Official Guidelines for Coding and Reporting</b> .....  | <b>Coding Guidelines-1</b> | Platelet .....   | Illustrations-2        |
| <b>ICD-10-CM Index to Diseases and Injuries</b> .....  | <b>1</b>                   | Coagulation .....  | Illustrations-2        |
| <b>ICD-10-CM Neoplasm Table</b> .....  | <b>339</b>                 | Spleen Anatomical Location and External Structures .....   | Illustrations-3        |
| <b>ICD-10-CM Table of Drugs and Chemicals</b> .....  | <b>358</b>                 | Spleen Interior Structures .....   | Illustrations-3        |
| <b>ICD-10-CM Index to External Causes</b> .....  | <b>408</b>                 | Chapter 4. Endocrine, Nutritional, and Metabolic Diseases (E00-E89) .....  | Illustrations-4        |
| <b>ICD-10-CM Tabular List of Diseases and Injuries</b> .....   | <b>445</b>                 | Endocrine System .....   | Illustrations-4        |
| Chapter 1. Certain Infectious and Parasitic Diseases (A00-B99), U07.1, U09.9 .....   | 445                        | Thyroid .....  | Illustrations-5        |
| Chapter 2. Neoplasms (C00-D49) .....   | 471                        | Thyroid and Parathyroid Glands .....   | Illustrations-5        |
| Chapter 3. Diseases of the Blood and Blood-forming Organs and Certain Disorders Involving the Immune Mechanism (D50-D89) ..... | 513                        | Pancreas .....   | Illustrations-6        |
| Chapter 4. Endocrine, Nutritional, and Metabolic Diseases (E00-E89) .....  | 527                        | Anatomy of the Adrenal Gland .....   | Illustrations-6        |
| Chapter 5. Mental, Behavioral and Neurodevelopmental Disorders (F01-F99) .....   | 551                        | Structure of an Ovary .....  | Illustrations-7        |
| Chapter 6. Diseases of the Nervous System (G00-G99) .....  | 583                        | Testis and Associated Structures .....   | Illustrations-7        |
| Chapter 7. Diseases of the Eye and Adnexa (H00-H59) .....  | 607                        | Thymus .....   | Illustrations-8        |
| Chapter 8. Diseases of the Ear and Mastoid Process (H60-H95) .....   | 647                        |  |                        |
| Chapter 9. Diseases of the Circulatory System (I00-I99) .....  | 661                        |  |                        |
| Chapter 10. Diseases of the Respiratory System (J00-J99), U07.0 .....  | 709                        |  |                        |

|   |  |
|---|--|
| <p>Chapter 6. Diseases of the Nervous System (G00–G99) ..... Illustrations–9</p> <p style="padding-left: 20px;">Brain ..... Illustrations–9</p> <p style="padding-left: 20px;">Cranial Nerves ..... Illustrations–9</p> <p style="padding-left: 20px;">Peripheral Nervous System ..... Illustrations–10</p> <p style="padding-left: 20px;">Spinal Cord and Spinal Nerves ..... Illustrations–11</p> <p style="padding-left: 20px;">Nerve Cell ..... Illustrations–12</p> <p style="padding-left: 20px;">Trigeminal and Facial Nerve Branches ..... Illustrations–12</p> <p>Chapter 7. Diseases of the Eye and Adnexa (H00–H59) ..... Illustrations–13</p> <p style="padding-left: 20px;">Eye ..... Illustrations–13</p> <p style="padding-left: 20px;">Posterior Pole of Globe/Flow of Aqueous Humor ..... Illustrations–13</p> <p style="padding-left: 20px;">Lacrimal System ..... Illustrations–14</p> <p style="padding-left: 20px;">Eye Musculature ..... Illustrations–14</p> <p style="padding-left: 20px;">Eyelid Structures ..... Illustrations–14</p> <p>Chapter 8. Diseases of the Ear and Mastoid Process (H60–H95) ..... Illustrations–15</p> <p style="padding-left: 20px;">Ear Anatomy ..... Illustrations–15</p> <p>Chapter 9. Diseases of the Circulatory System (I00–I99) ..... Illustrations–16</p> <p style="padding-left: 20px;">Anatomy of the Heart ..... Illustrations–16</p> <p style="padding-left: 20px;">Heart Cross Section ..... Illustrations–16</p> <p style="padding-left: 20px;">Heart Valves ..... Illustrations–17</p> <p style="padding-left: 20px;">Heart Conduction System ..... Illustrations–17</p> <p style="padding-left: 20px;">Coronary Arteries ..... Illustrations–18</p> <p style="padding-left: 20px;">Arteries ..... Illustrations–19</p> <p style="padding-left: 20px;">Veins ..... Illustrations–20</p> <p style="padding-left: 20px;">Internal Carotid and Vertebral Arteries and Branches ..... Illustrations–21</p> <p style="padding-left: 20px;">External Carotid Artery and Branches ..... Illustrations–21</p> <p style="padding-left: 20px;">Branches of Abdominal Aorta ..... Illustrations–22</p> <p style="padding-left: 20px;">Portal Venous Circulation ..... Illustrations–22</p> <p style="padding-left: 20px;">Lymphatic System ..... Illustrations–23</p> <p style="padding-left: 20px;">Axillary Lymph Nodes ..... Illustrations–24</p> <p style="padding-left: 20px;">Lymphatic System of Head and Neck ..... Illustrations–24</p> <p style="padding-left: 20px;">Lymphatic Capillaries ..... Illustrations–25</p> <p style="padding-left: 20px;">Lymphatic Drainage ..... Illustrations–25</p> <p>Chapter 10. Diseases of the Respiratory System (J00–J99), U07.0 ..... Illustrations–26</p> <p style="padding-left: 20px;">Respiratory System ..... Illustrations–26</p> <p style="padding-left: 20px;">Upper Respiratory System ..... Illustrations–27</p> <p style="padding-left: 20px;">Lower Respiratory System ..... Illustrations–27</p> <p style="padding-left: 20px;">Paranasal Sinuses ..... Illustrations–27</p> <p style="padding-left: 20px;">Lung Segments ..... Illustrations–28</p> <p style="padding-left: 20px;">Alveoli ..... Illustrations–28</p> | <p>Chapter 11. Diseases of the Digestive System (K00–K95) ..... Illustrations–29</p> <p style="padding-left: 20px;">Digestive System ..... Illustrations–29</p> <p style="padding-left: 20px;">Omentum and Mesentery ..... Illustrations–30</p> <p style="padding-left: 20px;">Peritoneum and Retroperitoneum ..... Illustrations–30</p> <p>Chapter 12. Diseases of the Skin and Subcutaneous Tissue (L00–L99) ..... Illustrations–31</p> <p style="padding-left: 20px;">Nail Anatomy ..... Illustrations–31</p> <p style="padding-left: 20px;">Skin and Subcutaneous Tissue ..... Illustrations–31</p> <p>Chapter 13. Diseases of the Musculoskeletal System and Connective Tissue (M00–M99) ..... Illustrations–32</p> <p style="padding-left: 20px;">Bones and Joints ..... Illustrations–32</p> <p style="padding-left: 20px;">Shoulder Anterior View ..... Illustrations–33</p> <p style="padding-left: 20px;">Shoulder Posterior View ..... Illustrations–33</p> <p style="padding-left: 20px;">Elbow Anterior View ..... Illustrations–33</p> <p style="padding-left: 20px;">Elbow Posterior View ..... Illustrations–33</p> <p style="padding-left: 20px;">Hand ..... Illustrations–33</p> <p style="padding-left: 20px;">Hip Anterior View ..... Illustrations–34</p> <p style="padding-left: 20px;">Hip Posterior View ..... Illustrations–34</p> <p style="padding-left: 20px;">Knee Anterior View ..... Illustrations–34</p> <p style="padding-left: 20px;">Knee Posterior View ..... Illustrations–34</p> <p style="padding-left: 20px;">Foot ..... Illustrations–34</p> <p style="padding-left: 20px;">Muscles ..... Illustrations–35</p> <p>Chapter 14. Diseases of Genitourinary System (N00–N99) ..... Illustrations–36</p> <p style="padding-left: 20px;">Urinary System ..... Illustrations–36</p> <p style="padding-left: 20px;">Male Genitourinary System ..... Illustrations–37</p> <p style="padding-left: 20px;">Female Internal Genitalia ..... Illustrations–37</p> <p style="padding-left: 20px;">Female Genitourinary Tract Lateral View ..... Illustrations–37</p> <p>Chapter 15. Pregnancy, Childbirth, and the Puerperium (O00–O9A) ..... Illustrations–38</p> <p style="padding-left: 20px;">Term Pregnancy – Single Gestation ..... Illustrations–38</p> <p style="padding-left: 20px;">Twin Gestation–Dichorionic–Diamniotic (DI-DI) ..... Illustrations–38</p> <p style="padding-left: 20px;">Twin Gestation–Monochorionic–Diamniotic (MO-DI) ..... Illustrations–39</p> <p style="padding-left: 20px;">Twin Gestation–Monochorionic–Monoamniotic (MO-MO) ..... Illustrations–39</p> <p>Chapter 19. Injury, Poisoning, and Certain Other Consequences of External Causes (S00–T88) ..... Illustrations–40</p> <p style="padding-left: 20px;">Types of Fractures ..... Illustrations–40</p> <p style="padding-left: 20px;">Salter-Harris Fracture Types ..... Illustrations–40</p> |
|---|--|

**Age Edits**

**N Newborn Age: 0**  
 These diagnoses are intended for newborns and neonates and the patient's age must be 0 years.

**N47.0 Adherent prepuce, newborn** RP N

**P Pediatric Age: 0-17**  
 These diagnoses are intended for children and the patient's age must be between 0 and 17 years.

**L21.1 Seborrheic infantile dermatitis** RP P

**M Maternity Age: 9-64**  
 These diagnoses are intended for childbearing patients between the age of 9 and 64 years.

**O02.9 Abnormal product of conception, unspecified** RP M

**A Adult Age: 15-124**  
 These diagnoses are intended for patients between the age of 15 and 124 years.

**R54 Age-related physical debility** RP A  
 Frailty  
 Old age  
 Senescence  
 Senile asthenia  
 Senile debility  
**EXCLUDES1** *age-related cognitive decline (R41.81)*  
*sarcopenia (M62.84)*  
*senile psychosis (F03.-)*  
*senility NOS (R41.81)*

**Sex Edits**

Effective April 1, 2024, the Integrated Outpatient Code Editor (IOCE), a program used to process claims for outpatient providers, has deactivated the sex conflict edit. There will no longer be a female or male edit restriction for ICD-10-CM codes.

**NA Non-therapy Ancillary**  
 This icon identifies diagnoses that are considered comorbid conditions for the non-therapy ancillary (NTA) payment component of the Patient Driven Payment Model (PDPM). For a comprehensive list of all NTA comorbidity diagnosis codes, please refer to appendix E, at the back of this book.

**A31.0 Pulmonary mycobacterial infection** NA  
 Infection due to *Mycobacterium avium*  
 Infection due to *Mycobacterium intracellulare* [Battey bacillus]  
 Infection due to *Mycobacterium kansasii*

**SL Speech-language Pathology**  
 This icon identifies diagnoses that are considered comorbid conditions for the speech-language pathology (SLP) payment component of the Patient Driven Payment Model (PDPM). For a comprehensive list of all SLP comorbidity diagnosis codes, please refer to appendix E, at the back of this book.

**C02.1 Malignant neoplasm of border of tongue** SL  
 Malignant neoplasm of tip of tongue

**RP Return to Provider**  
 This icon identifies a diagnosis code that is unspecified, ambiguous, or is specified in the ICD-10-CM official coding guidelines and conventions to be inappropriate for reporting as the principal diagnosis. If one of these codes is reported as the principal diagnosis on the minimum data set (MDS), the MDS should be returned to the provider to select an appropriate ICD-10-CM code. For a comprehensive list of all return-to-provider codes, refer to appendix F, at the back of this book.

**B90.0 Sequelae of central nervous system tuberculosis** RP

**ED IRF Etiologic Diagnosis**  
 This icon identifies diagnoses that represent an etiologic diagnosis. The etiologic diagnosis, entered into Item 22 of the IRF-PAI, is the problem that led to the condition represented by the impairment group code (IGC), entered into Item 21 of the IRF-PAI. For a comprehensive list of impairment groups to which these etiologic diagnoses may be grouped, please refer to appendix H, at the back of this book.

**G37.1 Central demyelination of corpus callosum** ED

**CC IRF Comorbid Condition**  
 This icon identifies diagnoses that are considered comorbid conditions for an inpatient rehabilitation admission. When reported as secondary diagnoses, these conditions are recognized as having a significant impact on the cost of furnishing inpatient rehabilitation services, therefore qualifying a case for payment adjustment. Comorbid conditions are entered into Item 24 of the IRF-PAI. For a comprehensive list of all comorbid conditions, please refer to appendix I, at the back of this book.

**A32.89 Other forms of listeriosis** CC  
 Listerial cerebral arteritis

**Color Bars**

**Manifestation Code**  
 Codes defined as manifestation codes appear in italic type, with a blue color bar over the code description. A manifestation cannot be reported as a first-listed code; it is sequenced as a secondary diagnosis with the underlying disease code listed first.

**G32.89 Other specified degenerative disorders of nervous system in diseases classified elsewhere** RP  
*Degenerative encephalopathy in diseases classified elsewhere*

**Unspecified Diagnosis**  
 Codes that appear with a gray color bar over the alphanumeric code identify unspecified diagnoses. These codes should be used in limited circumstances, when neither the diagnostic statement nor the documentation provides enough information to assign a more specific diagnosis code. The abbreviation NOS, "not otherwise specified," in the tabular list may be interpreted as "unspecified."

**G03.9 Meningitis, unspecified** CC  
 Arachnoiditis (spinal) NOS  
**RIC Excl:** 03 Non-traumatic brain injury; 05 Non-traumatic spinal cord injury

# ICD-10-CM Index to Diseases and Injuries

## A

**Aarskog's syndrome** Q87.19  
**Abandonment** — see Maltreatment  
**Abasia** (-astasia) (hysterical) F44.4  
**Abderhalden-Kaufmann-Lignac syndrome** (cystinosis) E72.04  
**Abdomen, abdominal** — see also condition  
 acute R10.0  
 angina K55.1  
 muscle deficiency syndrome Q79.4  
**Abdominalgia** — see Pain, abdominal  
**Abduction contracture, hip or other joint** — see Contraction, joint  
**Aberrant** (congenital) — see also Malposition, congenital  
 adrenal gland Q89.1  
 artery (peripheral) Q27.8  
   basilar NEC Q28.1  
   cerebral Q28.3  
   coronary Q24.5  
   digestive system Q27.8  
   eye Q15.8  
   lower limb Q27.8  
   precerebral Q28.1  
   pulmonary Q25.79  
   renal Q27.2  
   retina Q14.1  
   specified site NEC Q27.8  
   subclavian Q27.8  
   upper limb Q27.8  
   vertebral Q28.1  
 breast Q83.8  
 endocrine gland NEC Q89.2  
 hepatic duct Q44.5  
 pancreas Q45.3  
 parathyroid gland Q89.2  
 pituitary gland Q89.2  
 sebaceous glands, mucous membrane, mouth, congenital Q38.6  
 spleen Q89.09  
 subclavian artery Q27.8  
 thymus (gland) Q89.2  
 thyroid gland Q89.2  
 vein (peripheral) NEC Q27.8  
   cerebral Q28.3  
   digestive system Q27.8  
   lower limb Q27.8  
   precerebral Q28.1  
   specified site NEC Q27.8  
   upper limb Q27.8  
**Aberration**  
 distantal — see Disturbance, visual  
 mental F99  
**Abetalipoproteinemia** E78.6  
**Abiotrophy** R68.89  
**Ablatio, ablation**  
 retinae — see Detachment, retina  
**Ablepharia, ablepharon** Q10.3  
**Abnormal, abnormality, abnormalities** — see also Anomaly  
 acid-base balance (mixed) E87.4  
 albumin R77.0  
 alphafetoprotein R77.2  
 alveolar ridge K08.9  
 anatomical relationship Q89.9  
 apertures, congenital, diaphragm Q79.1  
 atrial septal, specified NEC Q21.19  
 auditory perception H93.29-   
   diplacusis — see Diplacusis  
   hyperacusis — see Hyperacusis  
   recruitment — see Recruitment, auditory  
   threshold shift — see Shift, auditory threshold  
 autosomes Q99.9  
   fragile site Q95.5  
 basal metabolic rate R94.8  
 biosynthesis, testicular androgen E29.1  
 bleeding time R79.1  
 blood amino-acid level R79.83  
 blood level (of)  
   cobalt R79.0  
   copper R79.0  
   iron R79.0

**Abnormal, abnormality, abnormalities** — continued  
 blood level — continued  
   lithium R78.89  
   magnesium R79.0  
   mineral NEC R79.0  
   zinc R79.0  
 blood pressure  
   elevated R03.0  
   low reading (nonspecific) R03.1  
 blood sugar R73.09  
 blood-gas level R79.81  
 bowel sounds R19.15  
   absent R19.11  
   hyperactive R19.12  
 brain scan R94.02  
 breathing R06.9  
 caloric test R94.138  
 cerebrospinal fluid R83.9  
   cytology R83.6  
   drug level R83.2  
   enzyme level R83.0  
   hormones R83.1  
   immunology R83.4  
   microbiology R83.5  
   nonmedicinal level R83.3  
   specified type NEC R83.8  
 chemistry, blood R79.9  
   C-reactive protein R79.82  
   drugs — see Findings, abnormal, in blood  
   gas level R79.81  
   minerals R79.0  
   pancytopenia D61.818  
   PTT R79.1  
   specified NEC R79.89  
   toxins — see Findings, abnormal, in blood  
 chest sounds (friction) (rales) R09.89  
 chromosome, chromosomal Q99.9  
 with more than three X chromosomes, female Q97.1  
 analysis result R89.8  
   bronchial washings R84.8  
   cerebrospinal fluid R83.8  
   cervix uteri NEC R87.89  
   nasal secretions R84.8  
   nipple discharge R89.8  
   peritoneal fluid R85.89  
   pleural fluid R84.8  
   prostatic secretions R86.8  
   saliva R85.89  
   seminal fluid R86.8  
   sputum R84.8  
   synovial fluid R89.8  
   throat scrapings R84.8  
   vagina R87.89  
   vulva R87.89  
   wound secretions R89.8  
 dcentric replacement Q93.2  
 ring replacement Q93.2  
 sex Q99.8  
   female phenotype Q97.9  
     specified NEC Q97.8  
   male phenotype Q98.9  
     specified NEC Q98.8  
   structural male Q98.6  
     specified NEC Q99.8  
 clinical findings NEC R68.89  
 coagulation D68.9  
   newborn, transient P61.6  
   profile R79.1  
   time R79.1  
 communication — see Fistula  
 conjunctiva, vascular H11.41-   
 coronary artery Q24.5  
 cortisol-binding globulin E27.8  
 course, eustachian tube Q17.8  
 creatinine clearance R94.4  
 cytology  
   anus R85.619  
     atypical squamous cells cannot exclude high grade squamous intraepithelial lesion (ASC-H) R85.611  
     atypical squamous cells of undetermined significance (ASC-US) R85.610  
     cytologic evidence of malignancy R85.614

**Abnormal, abnormality, abnormalities** — continued  
 cytology — continued  
 anus — continued  
   high grade squamous intraepithelial lesion (HGSIL) R85.613  
   human papillomavirus (HPV) DNA test  
   high risk positive R85.81  
   low risk positive R85.82  
   inadequate smear R85.615  
   low grade squamous intraepithelial lesion (LGSIL) R85.612  
   satisfactory anal smear but lacking transformation zone R85.616  
   specified NEC R85.618  
   unsatisfactory smear R85.615  
   female genital organs — see Abnormal, Papanicolaou (smear)  
 dark adaptation curve H53.61  
 dentofacial NEC — see Anomaly, dentofacial development, developmental Q89.9  
   central nervous system Q07.9  
 diagnostic imaging  
   abdomen, abdominal region NEC R93.5  
   biliary tract R93.2  
   bladder R93.41  
   breast R92.8  
   central nervous system NEC R90.89  
   cerebrovascular NEC R90.89  
   coronary circulation R93.1  
   digestive tract NEC R93.3  
   gastrointestinal (tract) R93.3  
   genitourinary organs R93.89  
   head R93.0  
   heart R93.1  
   intrathoracic organ NEC R93.89  
   kidney R93.42-   
   limbs R93.6  
   liver R93.2  
   lung (field) R91.8  
   musculoskeletal system NEC R93.7  
   renal pelvis R93.41  
   retroperitoneum R93.5  
   site specified NEC R93.89  
   skin and subcutaneous tissue R93.89  
   skull R93.0  
   testis R93.81-   
   ureter R93.41  
   urinary organs specified NEC R93.49  
 direction, teeth, fully erupted M26.30  
 ear ossicles, acquired NEC H74.39-   
   ankylosis — see Ankylosis, ear ossicles  
   discontinuity — see Discontinuity, ossicles, ear  
   partial loss — see Loss, ossicles, ear (partial)  
 Epstein Q22.5  
 echocardiogram R93.1  
 echoencephalogram R90.81  
 echogram — see Abnormal, diagnostic imaging  
 electrocardiogram [ECG] [EKG] R94.31  
 electroencephalogram [EEG] R94.01  
 electrolyte — see Imbalance, electrolyte  
 electromyogram [EMG] R94.131  
 electro-oculogram [EOG] R94.110  
 electrophysiological intracardiac studies R94.39  
 electroretinogram [ERG] R94.111  
 erythrocytes  
   congenital, with perinatal jaundice D58.9  
 feces (color) (contents) (mucus) R19.5  
 finding — see Findings, abnormal, without diagnosis fluid  
   amniotic — see Abnormal, specimen, specified  
   cerebrospinal — see Abnormal, cerebrospinal fluid  
   peritoneal — see Abnormal, specimen, digestive organs  
   pleural — see Abnormal, specimen, respiratory organs  
   synovial — see Abnormal, specimen, specified  
   thorax (bronchial washings) (pleural fluid) — see Abnormal, specimen, respiratory organs  
   vaginal — see Abnormal, specimen, female genital organs  
 form  
   teeth K00.2  
   uterus — see Anomaly, uterus

|   | Malignant Primary | Malignant Secondary | Ca in situ | Benign  | Uncertain Behavior | Unspecified Behavior |  | Malignant Primary | Malignant Secondary | Ca in situ | Benign  | Uncertain Behavior | Unspecified Behavior |
|---|-------------------|---------------------|------------|---------|--------------------|----------------------|--|-------------------|---------------------|------------|---------|--------------------|----------------------|
| <b>Neoplasm, neoplastic</b>                                     |                   |                     |            |         |                    |                      | <b>Neoplasm, neoplastic</b>  |                   |                     |            |         |                    |                      |
| — <i>continued</i>  |                   |                     |            |         |                    |                      | — <i>continued</i>   |                   |                     |            |         |                    |                      |
| brain — <i>continued</i>  |                   |                     |            |         |                    |                      | bronchus — <i>continued</i>  |                   |                     |            |         |                    |                      |
| basal ganglia   | C71.0             | C79.31              | —          | D33.0   | D43.0              | D49.6                | main   | C34.0-✓           | C78.0-✓             | D02.2-✓    | D14.3-✓ | D38.1              | D49.1                |
| cerebellopontine angle  | C71.6             | C79.31              | —          | D33.1   | D43.1              | D49.6                | middle lobe of lung  | C34.2             | C78.0-✓             | D02.21     | D14.31  | D38.1              | D49.1                |
| cerebellum NOS  | C71.6             | C79.31              | —          | D33.1   | D43.1              | D49.6                | overlapping lesion   | C34.8-✓           | —                   | —          | —       | —                  | —                    |
| cerebrum  | C71.0             | C79.31              | —          | D33.0   | D43.0              | D49.6                | upper lobe of lung   | C34.1-✓           | C78.0-✓             | D02.2-✓    | D14.3-✓ | D38.1              | D49.1                |
| choroid plexus  | C71.7             | C79.31              | —          | D33.1   | D43.1              | D49.6                | brow   | C44.309           | C79.2               | D04.39     | D23.39  | D48.5              | D49.2                |
| corpus callosum   | C71.8             | C79.31              | —          | D33.2   | D43.2              | D49.6                | basal cell carcinoma specified type NEC                            | C44.319           | —                   | —          | —       | —                  | —                    |
| corpus striatum   | C71.0             | C79.31              | —          | D33.0   | D43.0              | D49.6                | squamous cell carcinoma  | C44.329           | —                   | —          | —       | —                  | —                    |
| cortex (cerebral)   | C71.0             | C79.31              | —          | D33.0   | D43.0              | D49.6                | buccal (cavity)  | C06.9             | C79.89              | D00.00     | D10.39  | D37.09             | D49.0                |
| frontal lobe  | C71.1             | C79.31              | —          | D33.0   | D43.0              | D49.6                | commissure   | C06.0             | C79.89              | D00.02     | D10.39  | D37.09             | D49.0                |
| globus pallidus   | C71.0             | C79.31              | —          | D33.0   | D43.0              | D49.6                | groove (lower)   | C06.1             | C79.89              | D00.02     | D10.39  | D37.09             | D49.0                |
| hippocampus   | C71.2             | C79.31              | —          | D33.0   | D43.0              | D49.6                | (upper)  | C06.0             | C79.89              | D00.02     | D10.39  | D37.09             | D49.0                |
| hypothalamus  | C71.0             | C79.31              | —          | D33.0   | D43.0              | D49.6                | mucosa   | C06.0             | C79.89              | D00.02     | D10.39  | D37.09             | D49.0                |
| internal capsule  | C71.0             | C79.31              | —          | D33.0   | D43.0              | D49.6                | sulcus (lower) (upper)   | C06.1             | C79.89              | D00.02     | D10.39  | D37.09             | D49.0                |
| medulla   |                   |                     |            |         |                    |                      | bulbourethral gland  | C68.0             | C79.19              | D09.19     | D30.4   | D41.3              | D49.59               |
| oblongata   | C71.7             | C79.31              | —          | D33.1   | D43.1              | D49.6                | bursa — <i>see</i> Neoplasm, connective tissue                     |                   |                     |            |         |                    |                      |
| meninges  | C70.0             | C79.32              | —          | D32.0   | D42.0              | D49.7                | buttock NEC  | C76.3             | C79.89              | D04.5      | D36.7   | D48.7              | D49.89               |
| midbrain  | C71.7             | C79.31              | —          | D33.1   | D43.1              | D49.6                | calves   | C76.5-✓           | C79.89              | D04.7-✓    | D36.7   | D48.7              | D49.89               |
| occipital lobe  | C71.4             | C79.31              | —          | D33.0   | D43.0              | D49.6                | calvarium  | C41.0             | C79.51              | —          | D16.4   | D48.0              | D49.2                |
| overlapping lesion  | C71.8             | C79.31              | —          | —       | —                  | —                    | calyx, renal canal   | C65.1-✓           | C79.0-✓             | D09.19     | D30.1-✓ | D41.1-✓            | D49.51-✓             |
| parietal lobe   | C71.3             | C79.31              | —          | D33.0   | D43.0              | D49.6                | anal   | C21.1             | C78.5               | D01.3      | D12.9   | D37.8              | D49.0                |
| peduncle  | C71.7             | C79.31              | —          | D33.1   | D43.1              | D49.6                | auditory (external) — <i>see also</i> Neoplasm, skin, ear          |                   |                     |            |         |                    |                      |
| pons  | C71.7             | C79.31              | —          | D33.1   | D43.1              | D49.6                | auricular (external) — <i>see also</i> Neoplasm, skin, ear         | C44.20-✓          | C79.2               | D04.2-✓    | D23.2-✓ | D48.5              | D49.2                |
| stem  | C71.7             | C79.31              | —          | D33.1   | D43.1              | D49.6                | canaliculi, biliary (biliferi) (intrahepatic)                      | C44.20-✓          | C79.2               | D04.2-✓    | D23.2-✓ | D48.5              | D49.2                |
| tapetum   | C71.8             | C79.31              | —          | D33.2   | D43.2              | D49.6                | canthus (eye) (inner) (outer)                                      | C22.1             | C78.7               | D01.5      | D13.4   | D37.6              | D49.0                |
| temporal lobe   | C71.2             | C79.31              | —          | D33.0   | D43.0              | D49.6                | basal cell carcinoma   | C44.10-✓          | C79.2               | D04.1-✓    | D23.1-✓ | D48.5              | D49.2                |
| thalamus  | C71.0             | C79.31              | —          | D33.0   | D43.0              | D49.6                | sebaceous cell   | C44.11-✓          | —                   | —          | —       | —                  | —                    |
| uncus   | C71.2             | C79.31              | —          | D33.0   | D43.0              | D49.6                | specified type NEC   | C44.13-✓          | —                   | —          | —       | —                  | —                    |
| ventricle (floor)   | C71.5             | C79.31              | —          | D33.0   | D43.0              | D49.6                | squamous cell carcinoma  | C44.19-✓          | —                   | —          | —       | —                  | —                    |
| fourth  | C71.7             | C79.31              | —          | D33.1   | D43.1              | D49.6                | capillary — <i>see</i> Neoplasm, connective tissue                 | C44.12-✓          | —                   | —          | —       | —                  | —                    |
| branchial (left) (cyst) (vestigis)                              | C10.4             | C79.89              | D00.08     | D10.5   | D37.05             | D49.0                | caput coli   | C18.0             | C78.5               | D01.0      | D12.0   | D37.4              | D49.0                |
| breast (connective tissue) (glandular tissue) (soft parts)      | C50.9-✓           | C79.81              | D05.1-✓    | D24.1-✓ | D48.6-✓            | D49.3                | carcinoid — <i>see</i> Tumor, carcinoma                            | C16.0             | C78.89              | D00.2      | D13.1   | D37.1              | D49.0                |
| areola  | C50.0-✓           | C79.81              | D05.1-✓    | D24.1-✓ | D48.6-✓            | D49.3                | cardia (gastric)   | C16.0             | C78.89              | D00.2      | D13.1   | D37.1              | D49.0                |
| axillary tail   | C50.6-✓           | C79.81              | D05.1-✓    | D24.1-✓ | D48.6-✓            | D49.3                | cardiac orifice (stomach)  | C16.0             | C78.89              | D00.2      | D13.1   | D37.1              | D49.0                |
| central portion   | C50.1-✓           | C79.81              | D05.1-✓    | D24.1-✓ | D48.6-✓            | D49.3                | cardio-esophageal junction   | C16.0             | C78.89              | D00.2      | D13.1   | D37.1              | D49.0                |
| inner   | C50.8-✓           | C79.81              | D05.1-✓    | D24.1-✓ | D48.6-✓            | D49.3                | cardio-esophagus carina (bronchus)                                 | C34.0-✓           | C78.0-✓             | D02.2-✓    | D14.3-✓ | D38.1              | D49.1                |
| lower   | C50.8-✓           | C79.81              | D05.1-✓    | D24.1-✓ | D48.6-✓            | D49.3                | carotid (artery)   | C49.0             | C79.89              | —          | D21.0   | D48.1-✓            | D49.2                |
| lower-inner quadrant  | C50.3-✓           | C79.81              | D05.1-✓    | D24.1-✓ | D48.6-✓            | D49.3                | body   | C75.4             | C79.89              | —          | D35.5   | D44.6              | D49.7                |
| lower-outer quadrant  | C50.5-✓           | C79.81              | D05.1-✓    | D24.1-✓ | D48.6-✓            | D49.3                | carpus (any bone)  | C40.1-✓           | C79.51              | —          | D16.1-✓ | —                  | —                    |
| mastectomy site (skin) — <i>see also</i> Neoplasm, breast, skin | C44.501           | C79.2               | —          | —       | —                  | —                    | cartilage (articular) (joint) NEC — <i>see also</i> Neoplasm, bone | C41.9             | C79.51              | —          | D16.9   | D48.0              | D49.2                |
| specified as breast tissue                                      | C50.8-✓           | C79.81              | —          | —       | —                  | —                    | arytenoid  | C32.3             | C78.39              | D02.0      | D14.1   | D38.0              | D49.1                |
| midline   | C50.8-✓           | C79.81              | D05.1-✓    | D24.1-✓ | D48.6-✓            | D49.3                | auricular  | C49.0             | C79.89              | —          | D21.0   | D48.1-✓            | D49.2                |
| nipple  | C50.0-✓           | C79.81              | D05.1-✓    | D24.1-✓ | D48.6-✓            | D49.3                | bronchi  | C34.0-✓           | C78.39              | —          | D14.3-✓ | D38.1              | D49.1                |
| outer   | C50.8-✓           | C79.81              | D05.1-✓    | D24.1-✓ | D48.6-✓            | D49.3                | costal   | C41.3             | C79.51              | —          | D16.7   | D48.0              | D49.2                |
| overlapping lesion  | C50.8-✓           | —                   | —          | —       | —                  | —                    | cricoid  | C32.3             | C78.39              | D02.0      | D14.1   | D38.0              | D49.1                |
| skin  | C44.501           | C79.2               | D04.5      | D23.5   | D48.5              | D49.2                | cuneiform  | C32.3             | C78.39              | D02.0      | D14.1   | D38.0              | D49.1                |
| basal cell carcinoma  | C44.511           | —                   | —          | —       | —                  | —                    | ear (external)   | C49.0             | C79.89              | —          | D21.0   | D48.1-✓            | D49.2                |
| specified type NEC  | C44.591           | —                   | —          | —       | —                  | —                    | ensiform   | C41.3             | C79.51              | —          | D16.7   | D48.0              | D49.2                |
| squamous cell carcinoma   | C44.521           | —                   | —          | —       | —                  | —                    | epiglottis   | C32.1             | C78.39              | D02.0      | D14.1   | D38.0              | D49.1                |
| tail (axillary)   | C50.6-✓           | C79.81              | D05.1-✓    | D24.1-✓ | D48.6-✓            | D49.3                |  |                   |                     |            |         |                    |                      |
| upper   | C50.8-✓           | C79.81              | D05.1-✓    | D24.1-✓ | D48.6-✓            | D49.3                |  |                   |                     |            |         |                    |                      |
| upper-inner quadrant  | C50.2-✓           | C79.81              | D05.1-✓    | D24.1-✓ | D48.6-✓            | D49.3                |  |                   |                     |            |         |                    |                      |
| upper-outer quadrant  | C50.4-✓           | C79.81              | D05.1-✓    | D24.1-✓ | D48.6-✓            | D49.3                |  |                   |                     |            |         |                    |                      |
| broad ligament  | C57.1-✓           | C79.82              | D07.39     | D28.2   | D39.8              | D49.59               |  |                   |                     |            |         |                    |                      |
| bronchiogenic, bronchogenic (lung)                              | C34.9-✓           | C78.0-✓             | D02.2-✓    | D14.3-✓ | D38.1              | D49.1                |  |                   |                     |            |         |                    |                      |
| bronchiole  | C34.9-✓           | C78.0-✓             | D02.2-✓    | D14.3-✓ | D38.1              | D49.1                |  |                   |                     |            |         |                    |                      |
| bronchus  | C34.9-✓           | C78.0-✓             | D02.2-✓    | D14.3-✓ | D38.1              | D49.1                |  |                   |                     |            |         |                    |                      |
| carina  | C34.0-✓           | C78.0-✓             | D02.2-✓    | D14.3-✓ | D38.1              | D49.1                |  |                   |                     |            |         |                    |                      |
| lower lobe of lung  | C34.3-✓           | C78.0-✓             | D02.2-✓    | D14.3-✓ | D38.1              | D49.1                |  |                   |                     |            |         |                    |                      |

| Substance  | Poisoning, Accidental (unintentional) | Poisoning, Intentional Self-harm | Poisoning, Assault | Poisoning, Undetermined | Adverse Effect | Under-dosing | Substance   | Poisoning, Accidental (unintentional) | Poisoning, Intentional Self-harm | Poisoning, Assault | Poisoning, Undetermined | Adverse Effect | Under-dosing |
|--|---------------------------------------|----------------------------------|--------------------|-------------------------|----------------|--------------|---|---------------------------------------|----------------------------------|--------------------|-------------------------|----------------|--------------|
| <b>Androstalolone</b>  | T38.7X1                               | T38.7X2                          | T38.7X3            | T38.7X4                 | T38.7X5        | T38.7X6      | <b>Anthiolimine</b>                                   | T37.4X1                               | T37.4X2                          | T37.4X3            | T37.4X4                 | T37.4X5        | T37.4X6      |
| <b>Androstanolone</b>  | T38.7X1                               | T38.7X2                          | T38.7X3            | T38.7X4                 | T38.7X5        | T38.7X6      | <b>Anthrakinone</b>                                   | T49.4X1                               | T49.4X2                          | T49.4X3            | T49.4X4                 | T49.4X5        | T49.4X6      |
| <b>Androsterone</b>  | T38.7X1                               | T38.7X2                          | T38.7X3            | T38.7X4                 | T38.7X5        | T38.7X6      | <b>Anthramycin</b>                                    | T45.1X1                               | T45.1X2                          | T45.1X3            | T45.1X4                 | T45.1X5        | T45.1X6      |
| <b>Anemone pulsatilla</b>  | T62.2X1                               | T62.2X2                          | T62.2X3            | T62.2X4                 | —              | —            | <b>Antiadrenergic NEC</b>                             | T44.8X1                               | T44.8X2                          | T44.8X3            | T44.8X4                 | T44.8X5        | T44.8X6      |
| <b>Anesthesia</b>  |                                       |                                  |                    |                         |                |              | <b>Antiallergic NEC</b>                               | T45.0X1                               | T45.0X2                          | T45.0X3            | T45.0X4                 | T45.0X5        | T45.0X6      |
| caudal   | T41.3X1                               | T41.3X2                          | T41.3X3            | T41.3X4                 | T41.3X5        | T41.3X6      | <b>Antiandrogen NEC</b>                               | T38.6X1                               | T38.6X2                          | T38.6X3            | T38.6X4                 | T38.6X5        | T38.6X6      |
| endotracheal   | T41.0X1                               | T41.0X2                          | T41.0X3            | T41.0X4                 | T41.0X5        | T41.0X6      | <b>Anti-anemic (drug) (preparation)</b>               | T45.8X1                               | T45.8X2                          | T45.8X3            | T45.8X4                 | T45.8X5        | T45.8X6      |
| epidural   | T41.3X1                               | T41.3X2                          | T41.3X3            | T41.3X4                 | T41.3X5        | T41.3X6      | <b>Antianxiety drug NEC</b>                           | T43.501                               | T43.502                          | T43.503            | T43.504                 | T43.505        | T43.506      |
| inhalation   | T41.0X1                               | T41.0X2                          | T41.0X3            | T41.0X4                 | T41.0X5        | T41.0X6      | <b>Antiarrhythmic drug NEC</b>                        | T65.891                               | T65.892                          | T65.893            | T65.894                 | —              | —            |
| local  | T41.3X1                               | T41.3X2                          | T41.3X3            | T41.3X4                 | T41.3X5        | T41.3X6      | <b>Antiarteriosclerotic drug</b>                      | T46.6X1                               | T46.6X2                          | T46.6X3            | T46.6X4                 | T46.6X5        | T46.6X6      |
| mucosal  | T41.3X1                               | T41.3X2                          | T41.3X3            | T41.3X4                 | T41.3X5        | T41.3X6      | <b>Antiasthmatic drug NEC</b>                         | T48.6X1                               | T48.6X2                          | T48.6X3            | T48.6X4                 | T48.6X5        | T48.6X6      |
| muscle relaxation  | T48.1X1                               | T48.1X2                          | T48.1X3            | T48.1X4                 | T48.1X5        | T48.1X6      | <b>Antibiotic Otic Suspension (Solution)*</b>         | T49.6X1                               | T49.6X2                          | T49.6X3            | T49.6X4                 | T49.6X5        | T49.6X6      |
| nerve blocking   | T41.3X1                               | T41.3X2                          | T41.3X3            | T41.3X4                 | T41.3X5        | T41.3X6      | <b>Antibiotic</b>                                     | T36.91                                | T36.92                           | T36.93             | T36.94                  | T36.95         | T36.96       |
| plexus blocking  | T41.3X1                               | T41.3X2                          | T41.3X3            | T41.3X4                 | T41.3X5        | T41.3X6      | aminoglycoside  | T36.5X1                               | T36.5X2                          | T36.5X3            | T36.5X4                 | T36.5X5        | T36.5X6      |
| potentiated  | T41.201                               | T41.202                          | T41.203            | T41.204                 | T41.205        | T41.206      | anticancer  | T45.1X1                               | T45.1X2                          | T45.1X3            | T45.1X4                 | T45.1X5        | T45.1X6      |
| rectal   | T41.201                               | T41.202                          | T41.203            | T41.204                 | T41.205        | T41.206      | antifungal  | T36.7X1                               | T36.7X2                          | T36.7X3            | T36.7X4                 | T36.7X5        | T36.7X6      |
| general  | T41.201                               | T41.202                          | T41.203            | T41.204                 | T41.205        | T41.206      | antimycobacterial                                     | T36.5X1                               | T36.5X2                          | T36.5X3            | T36.5X4                 | T36.5X5        | T36.5X6      |
| local  | T41.3X1                               | T41.3X2                          | T41.3X3            | T41.3X4                 | T41.3X5        | T41.3X6      | antineoplastic  | T45.1X1                               | T45.1X2                          | T45.1X3            | T45.1X4                 | T45.1X5        | T45.1X6      |
| regional   | T41.3X1                               | T41.3X2                          | T41.3X3            | T41.3X4                 | T41.3X5        | T41.3X6      | b-lactam NEC  | T36.1X1                               | T36.1X2                          | T36.1X3            | T36.1X4                 | T36.1X5        | T36.1X6      |
| surface  | T41.3X1                               | T41.3X2                          | T41.3X3            | T41.3X4                 | T41.3X5        | T41.3X6      | cephalosporin (group)                                 | T36.1X1                               | T36.1X2                          | T36.1X3            | T36.1X4                 | T36.1X5        | T36.1X6      |
| <b>Anesthetic NEC — see also Anesthesia</b>                          | T41.41                                | T41.42                           | T41.43             | T41.44                  | T41.45         | T41.46       | chloramphenicol (group)                               | T36.2X1                               | T36.2X2                          | T36.2X3            | T36.2X4                 | T36.2X5        | T36.2X6      |
| with muscle relaxant   |                                       |                                  |                    |                         |                |              | ENT   | T49.6X1                               | T49.6X2                          | T49.6X3            | T49.6X4                 | T49.6X5        | T49.6X6      |
| general  | T41.201                               | T41.202                          | T41.203            | T41.204                 | T41.205        | T41.206      | eye   | T49.5X1                               | T49.5X2                          | T49.5X3            | T49.5X4                 | T49.5X5        | T49.5X6      |
| local  | T41.3X1                               | T41.3X2                          | T41.3X3            | T41.3X4                 | T41.3X5        | T41.3X6      | fungicidal (local)                                    | T49.0X1                               | T49.0X2                          | T49.0X3            | T49.0X4                 | T49.0X5        | T49.0X6      |
| gaseous NEC  | T41.0X1                               | T41.0X2                          | T41.0X3            | T41.0X4                 | T41.0X5        | T41.0X6      | intestinal  | T36.8X1                               | T36.8X2                          | T36.8X3            | T36.8X4                 | T36.8X5        | T36.8X6      |
| general NEC  | T41.201                               | T41.202                          | T41.203            | T41.204                 | T41.205        | T41.206      | local   | T49.0X1                               | T49.0X2                          | T49.0X3            | T49.0X4                 | T49.0X5        | T49.0X6      |
| halogenated hydrocarbon derivatives NEC                              | T41.0X1                               | T41.0X2                          | T41.0X3            | T41.0X4                 | T41.0X5        | T41.0X6      | macrolides  | T36.3X1                               | T36.3X2                          | T36.3X3            | T36.3X4                 | T36.3X5        | T36.3X6      |
| infiltration NEC   | T41.3X1                               | T41.3X2                          | T41.3X3            | T41.3X4                 | T41.3X5        | T41.3X6      | polypeptide specified NEC                             | T36.8X1                               | T36.8X2                          | T36.8X3            | T36.8X4                 | T36.8X5        | T36.8X6      |
| intravenous NEC  | T41.1X1                               | T41.1X2                          | T41.1X3            | T41.1X4                 | T41.1X5        | T41.1X6      | tetracycline (group)                                  | T36.8X1                               | T36.8X2                          | T36.8X3            | T36.8X4                 | T36.8X5        | T36.8X6      |
| local NEC  | T41.3X1                               | T41.3X2                          | T41.3X3            | T41.3X4                 | T41.3X5        | T41.3X6      | throat  | T49.6X1                               | T49.6X2                          | T49.6X3            | T49.6X4                 | T49.6X5        | T49.6X6      |
| rectal   | T41.201                               | T41.202                          | T41.203            | T41.204                 | T41.205        | T41.206      | <b>Anticancer agents NEC</b>                          | T45.1X1                               | T45.1X2                          | T45.1X3            | T45.1X4                 | T45.1X5        | T45.1X6      |
| general  | T41.201                               | T41.202                          | T41.203            | T41.204                 | T41.205        | T41.206      | <b>Anticholesterolemic drug NEC</b>                   | T46.6X1                               | T46.6X2                          | T46.6X3            | T46.6X4                 | T46.6X5        | T46.6X6      |
| local  | T41.3X1                               | T41.3X2                          | T41.3X3            | T41.3X4                 | T41.3X5        | T41.3X6      | <b>Anticholinergic NEC</b>                            | T44.3X1                               | T44.3X2                          | T44.3X3            | T44.3X4                 | T44.3X5        | T44.3X6      |
| regional NEC   | T41.3X1                               | T41.3X2                          | T41.3X3            | T41.3X4                 | T41.3X5        | T41.3X6      | <b>Anticholinesterase</b>                             | T44.0X1                               | T44.0X2                          | T44.0X3            | T44.0X4                 | T44.0X5        | T44.0X6      |
| spinal NEC   | T41.3X1                               | T41.3X2                          | T41.3X3            | T41.3X4                 | T41.3X5        | T41.3X6      | organophosphorus insecticide                          | T44.0X1                               | T44.0X2                          | T44.0X3            | T44.0X4                 | T44.0X5        | T44.0X6      |
| thiobarbiturate  | T41.1X1                               | T41.1X2                          | T41.1X3            | T41.1X4                 | T41.1X5        | T41.1X6      | nerve gas   | T60.0X1                               | T60.0X2                          | T60.0X3            | —                       | —              | —            |
| topical  | T41.3X1                               | T41.3X2                          | T41.3X3            | T41.3X4                 | T41.3X5        | T41.3X6      | reversible ophthalmological                           | T44.0X1                               | T44.0X2                          | T44.0X3            | T44.0X4                 | T44.0X5        | T44.0X6      |
| <b>Aneurine</b>  | T45.2X1                               | T45.2X2                          | T45.2X3            | T45.2X4                 | T45.2X5        | T45.2X6      | <b>Anticoagulant NEC</b>                              | T49.5X1                               | T49.5X2                          | T49.5X3            | T49.5X4                 | T49.5X5        | T49.5X6      |
| <b>Angeliq*</b>  | T38.5X1                               | T38.5X2                          | T38.5X3            | T38.5X4                 | T38.5X5        | T38.5X6      | Antagonist  | T45.511                               | T45.512                          | T45.513            | T45.514                 | T45.515        | T45.516      |
| <b>Angio-Conray</b>  | T50.8X1                               | T50.8X2                          | T50.8X3            | T50.8X4                 | T50.8X5        | T50.8X6      | <b>Anti-common-cold drug NEC</b>                      | T48.5X1                               | T48.5X2                          | T48.5X3            | T48.5X4                 | T48.5X5        | T48.5X6      |
| <b>Angiotensin</b>   | T44.5X1                               | T44.5X2                          | T44.5X3            | T44.5X4                 | T44.5X5        | T44.5X6      | <b>Anticonvulsant</b>                                 | T42.71                                | T42.72                           | T42.73             | T42.74                  | T42.75         | T42.76       |
| <b>Angiotensinamide</b>  | T44.991                               | T44.992                          | T44.993            | T44.994                 | T44.995        | T44.996      | barbiturate   | T42.3X1                               | T42.3X2                          | T42.3X3            | T42.3X4                 | T42.3X5        | T42.3X6      |
| <b>Anhydrohydroxy-progesterone</b>                                   | T38.5X1                               | T38.5X2                          | T38.5X3            | T38.5X4                 | T38.5X5        | T38.5X6      | combination (with barbiturate)                        | T42.3X1                               | T42.3X2                          | T42.3X3            | T42.3X4                 | T42.3X5        | T42.3X6      |
| <b>Anhydron</b>  | T50.2X1                               | T50.2X2                          | T50.2X3            | T50.2X4                 | T50.2X5        | T50.2X6      | hydantoin   | T42.0X1                               | T42.0X2                          | T42.0X3            | T42.0X4                 | T42.0X5        | T42.0X6      |
| <b>Anileridine</b>   | T40.491                               | T40.492                          | T40.493            | T40.494                 | T40.495        | T40.496      | hypnotic NEC  | T42.6X1                               | T42.6X2                          | T42.6X3            | T42.6X4                 | T42.6X5        | T42.6X6      |
| <b>Aniline (dye) (liquid) analgesic derivatives, therapeutic NEC</b> | T65.3X1                               | T65.3X2                          | T65.3X3            | T65.3X4                 | —              | —            | oxazolindione   | T42.2X1                               | T42.2X2                          | T42.2X3            | T42.2X4                 | T42.2X5        | T42.2X6      |
| vapor  | T65.3X1                               | T65.3X2                          | T65.3X3            | T65.3X4                 | —              | —            | pyrimidinedione specified NEC                         | T42.6X1                               | T42.6X2                          | T42.6X3            | T42.6X4                 | T42.6X5        | T42.6X6      |
| <b>Anisocorpine</b>  | T44.3X1                               | T44.3X2                          | T44.3X3            | T44.3X4                 | T44.3X5        | T44.3X6      | succinimide   | T42.2X1                               | T42.2X2                          | T42.2X3            | T42.2X4                 | T42.2X5        | T42.2X6      |
| <b>Anise oil</b>   | T47.5X1                               | T47.5X2                          | T47.5X3            | T47.5X4                 | T47.5X5        | T47.5X6      | <b>Antidepressant</b>                                 | T43.201                               | T43.202                          | T43.203            | T43.204                 | T43.205        | T43.206      |
| <b>Anisidine</b>   | T65.3X1                               | T65.3X2                          | T65.3X3            | T65.3X4                 | T45.515        | T45.516      | monoamine oxidase inhibitor                           | T43.1X1                               | T43.1X2                          | T43.1X3            | T43.1X4                 | T43.1X5        | T43.1X6      |
| <b>Anisindione</b>   | T45.511                               | T45.512                          | T45.513            | T45.514                 | T45.515        | T45.516      | selective serotonin norepinephrine reuptake inhibitor | T43.211                               | T43.212                          | T43.213            | T43.214                 | T43.215        | T43.216      |
| <b>Anisotropine methyl-bromide</b>                                   | T44.3X1                               | T44.3X2                          | T44.3X3            | T44.3X4                 | T44.3X5        | T44.3X6      | selective serotonin reuptake inhibitor                | T43.221                               | T43.222                          | T43.223            | T43.224                 | T43.225        | T43.226      |
| <b>Anistreplase</b>  | T45.611                               | T45.612                          | T45.613            | T45.614                 | T45.615        | T45.616      | specified NEC   | T43.291                               | T43.292                          | T43.293            | T43.294                 | T43.295        | T43.296      |
| <b>Anorexiant (central)</b>  | T50.5X1                               | T50.5X2                          | T50.5X3            | T50.5X4                 | T50.5X5        | T50.5X6      | tetracycline  | T43.021                               | T43.022                          | T43.023            | T43.024                 | T43.025        | T43.026      |
| <b>Anorexic agents</b>   | T50.5X1                               | T50.5X2                          | T50.5X3            | T50.5X4                 | T50.5X5        | T50.5X6      | triazolopyridine                                      | T43.211                               | T43.212                          | T43.213            | T43.214                 | T43.215        | T43.216      |
| <b>Ansaid*</b>   | T39.311                               | T39.312                          | T39.313            | T39.314                 | T39.315        | T39.316      | tricyclic   | T43.011                               | T43.012                          | T43.013            | T43.014                 | T43.015        | T43.016      |
| <b>Ansamycin</b>   | T36.6X1                               | T36.6X2                          | T36.6X3            | T36.6X4                 | T36.6X5        | T36.6X6      | <b>Antidiabetic NEC</b>                               | T38.3X1                               | T38.3X2                          | T38.3X3            | T38.3X4                 | T38.3X5        | T38.3X6      |
| <b>Ant (bite) (sting)</b>  | T63.421                               | T63.422                          | T63.423            | T63.424                 | —              | —            | biguanide and sulfonyl combined                       | T38.3X1                               | T38.3X2                          | T38.3X3            | T38.3X4                 | T38.3X5        | T38.3X6      |
| <b>Antabuse</b>  | T50.6X1                               | T50.6X2                          | T50.6X3            | T50.6X4                 | T50.6X5        | T50.6X6      | combined sulfonyleurea                                | T38.3X1                               | T38.3X2                          | T38.3X3            | T38.3X4                 | T38.3X5        | T38.3X6      |
| <b>Antacid NEC</b>   | T47.1X1                               | T47.1X2                          | T47.1X3            | T47.1X4                 | T47.1X5        | T47.1X6      | <b>Antidiarrheal drug NEC</b>                         | T47.6X1                               | T47.6X2                          | T47.6X3            | T47.6X4                 | T47.6X5        | T47.6X6      |
| <b>Antagonist</b>  |                                       |                                  |                    |                         |                |              | absorbent   | T47.6X1                               | T47.6X2                          | T47.6X3            | T47.6X4                 | T47.6X5        | T47.6X6      |
| Aldosterone  | T50.0X1                               | T50.0X2                          | T50.0X3            | T50.0X4                 | T50.0X5        | T50.0X6      | <b>Anti-D immunoglobulin (human)</b>                  | T50.211                               | T50.212                          | T50.213            | T50.214                 | T50.215        | T50.216      |
| alpha-adrenoreceptor   | T44.6X1                               | T44.6X2                          | T44.6X3            | T44.6X4                 | T44.6X5        | T44.6X6      | <b>Antidiphtheria serum</b>                           | T50.211                               | T50.212                          | T50.213            | T50.214                 | T50.215        | T50.216      |
| anticoagulant  | T45.7X1                               | T45.7X2                          | T45.7X3            | T45.7X4                 | T45.7X5        | T45.7X6      | <b>Antidiuretic hormone</b>                           | T38.891                               | T38.892                          | T38.893            | T38.894                 | T38.895        | T38.896      |
| beta-adrenoreceptor  | T44.7X1                               | T44.7X2                          | T44.7X3            | T44.7X4                 | T44.7X5        | T44.7X6      | <b>Antidote NEC</b>                                   | T50.6X1                               | T50.6X2                          | T50.6X3            | T50.6X4                 | T50.6X5        | T50.6X6      |
| extrapyramidal NEC   | T44.3X1                               | T44.3X2                          | T44.3X3            | T44.3X4                 | T44.3X5        | T44.3X6      | heavy metal   | T45.8X1                               | T45.8X2                          | T45.8X3            | T45.8X4                 | T45.8X5        | T45.8X6      |
| folic acid   | T45.1X1                               | T45.1X2                          | T45.1X3            | T45.1X4                 | T45.1X5        | T45.1X6      | <b>Antidysrhythmic NEC</b>                            | T46.2X1                               | T46.2X2                          | T46.2X3            | T46.2X4                 | T46.2X5        | T46.2X6      |
| H2 receptor  | T47.0X1                               | T47.0X2                          | T47.0X3            | T47.0X4                 | T47.0X5        | T47.0X6      |   |                                       |                                  |                    |                         |                |              |
| heavy metal  | T45.8X1                               | T45.8X2                          | T45.8X3            | T45.8X4                 | T45.8X5        | T45.8X6      |   |                                       |                                  |                    |                         |                |              |
| narcotic analgesic   | T50.7X1                               | T50.7X2                          | T50.7X3            | T50.7X4                 | T50.7X5        | T50.7X6      |   |                                       |                                  |                    |                         |                |              |
| opiate   | T50.7X1                               | T50.7X2                          | T50.7X3            | T50.7X4                 | T50.7X5        | T50.7X6      |   |                                       |                                  |                    |                         |                |              |
| pyrimidine   | T45.1X1                               | T45.1X2                          | T45.1X3            | T45.1X4                 | T45.1X5        | T45.1X6      |   |                                       |                                  |                    |                         |                |              |

|  |   |
|--|---|
| <b>C02.4 Malignant neoplasm of lingual tonsil</b> <span style="float: right;">SL</span><br><i>EXCLUDES 2</i> malignant neoplasm of tonsil NOS (C09.9)  | <b>C07 Malignant neoplasm of parotid gland</b><br>Use additional code to identify:<br>alcohol abuse and dependence (F10.-)<br>exposure to environmental tobacco smoke (Z77.22)<br>exposure to tobacco smoke in the perinatal period (P96.81)<br>history of tobacco dependence (Z87.891)<br>occupational exposure to environmental tobacco smoke (Z57.31)<br>tobacco dependence (F17.-)<br>tobacco use (Z72.0)   |
| <b>C02.8 Malignant neoplasm of overlapping sites of tongue</b> <span style="float: right;">SL</span><br>Malignant neoplasm of two or more contiguous sites of tongue   | <b>√4th C08 Malignant neoplasm of other and unspecified major salivary glands</b><br><i>INCLUDES</i> malignant neoplasm of salivary ducts<br>Use additional code to identify:<br>alcohol abuse and dependence (F10.-)<br>exposure to environmental tobacco smoke (Z77.22)<br>exposure to tobacco smoke in the perinatal period (P96.81)<br>history of tobacco dependence (Z87.891)<br>occupational exposure to environmental tobacco smoke (Z57.31)<br>tobacco dependence (F17.-)<br>tobacco use (Z72.0)  |
| <b>C02.9 Malignant neoplasm of tongue, unspecified</b> <span style="float: right;">SL</span>   | <i>EXCLUDES 1</i> malignant neoplasms of specified minor salivary glands which are classified according to their anatomical location<br><i>EXCLUDES 2</i> malignant neoplasms of minor salivary glands NOS (C06.9)<br>malignant neoplasm of parotid gland (C07)   |
| <b>√4th C03 Malignant neoplasm of gum</b><br><i>INCLUDES</i> malignant neoplasm of alveolar (ridge) mucosa<br>malignant neoplasm of gingiva<br>Use additional code to identify:<br>alcohol abuse and dependence (F10.-)<br>history of tobacco dependence (Z87.891)<br>tobacco dependence (F17.-)<br>tobacco use (Z72.0)<br><i>EXCLUDES 2</i> malignant odontogenic neoplasms (C41.0-C41.1)                                   | <b>C08.0 Malignant neoplasm of submandibular gland</b> <span style="float: right;">SL</span><br>Malignant neoplasm of submaxillary gland  |
| <b>C03.0 Malignant neoplasm of upper gum</b> <span style="float: right;">SL</span>   | <b>C08.1 Malignant neoplasm of sublingual gland</b> <span style="float: right;">SL</span>   |
| <b>C03.1 Malignant neoplasm of lower gum</b> <span style="float: right;">SL</span>   | <b>C08.9 Malignant neoplasm of major salivary gland, unspecified</b> <span style="float: right;">SL</span><br>Malignant neoplasm of salivary gland (major) NOS  |
| <b>C03.9 Malignant neoplasm of gum, unspecified</b> <span style="float: right;">SL</span>  | <b>√4th C09 Malignant neoplasm of tonsil</b><br>Use additional code to identify:<br>alcohol abuse and dependence (F10.-)<br>exposure to environmental tobacco smoke (Z77.22)<br>exposure to tobacco smoke in the perinatal period (P96.81)<br>history of tobacco dependence (Z87.891)<br>occupational exposure to environmental tobacco smoke (Z57.31)<br>tobacco dependence (F17.-)<br>tobacco use (Z72.0)<br><i>EXCLUDES 2</i> malignant neoplasm of lingual tonsil (C02.4)<br>malignant neoplasm of pharyngeal tonsil (C11.1)  |
| <b>√4th C04 Malignant neoplasm of floor of mouth</b><br>Use additional code to identify:<br>alcohol abuse and dependence (F10.-)<br>history of tobacco dependence (Z87.891)<br>tobacco dependence (F17.-)<br>tobacco use (Z72.0)   | <b>C09.0 Malignant neoplasm of tonsillar fossa</b> <span style="float: right;">SL</span>  |
| <b>C04.0 Malignant neoplasm of anterior floor of mouth</b> <span style="float: right;">SL</span><br>Malignant neoplasm of anterior to the premolar-canine junction   | <b>C09.1 Malignant neoplasm of tonsillar pillar (anterior) (posterior)</b> <span style="float: right;">SL</span>  |
| <b>C04.1 Malignant neoplasm of lateral floor of mouth</b> <span style="float: right;">SL</span>  | <b>C09.8 Malignant neoplasm of overlapping sites of tonsil</b> <span style="float: right;">SL</span>  |
| <b>C04.8 Malignant neoplasm of overlapping sites of floor of mouth</b> <span style="float: right;">SL</span>   | <b>C09.9 Malignant neoplasm of tonsil, unspecified</b> <span style="float: right;">SL</span><br>Malignant neoplasm of faucial tonsils<br>Malignant neoplasm of palatine tonsils<br>Malignant neoplasm of tonsil NOS   |
| <b>C04.9 Malignant neoplasm of floor of mouth, unspecified</b> <span style="float: right;">SL</span>   | <b>√4th C10 Malignant neoplasm of oropharynx</b><br>Use additional code to identify:<br>alcohol abuse and dependence (F10.-)<br>exposure to environmental tobacco smoke (Z77.22)<br>exposure to tobacco smoke in the perinatal period (P96.81)<br>history of tobacco dependence (Z87.891)<br>occupational exposure to environmental tobacco smoke (Z57.31)<br>tobacco dependence (F17.-)<br>tobacco use (Z72.0)<br><i>EXCLUDES 2</i> malignant neoplasm of tonsil (C09.-)<br><b>DEF:</b> Oropharynx: Middle portion of pharynx (throat); communicates with the oral cavity, nasopharynx and laryngopharynx. |
| <b>√4th C05 Malignant neoplasm of palate</b><br>Use additional code to identify:<br>alcohol abuse and dependence (F10.-)<br>history of tobacco dependence (Z87.891)<br>tobacco dependence (F17.-)<br>tobacco use (Z72.0)<br><i>EXCLUDES 1</i> Kaposi's sarcoma of palate (C46.2)   | <b>C10.0 Malignant neoplasm of vallecula</b> <span style="float: right;">SL</span>  |
| <b>C05.0 Malignant neoplasm of hard palate</b> <span style="float: right;">SL</span>   | <b>C10.1 Malignant neoplasm of anterior surface of epiglottis</b> <span style="float: right;">SL</span><br>Malignant neoplasm of epiglottis, free border [margin]<br>Malignant neoplasm of glossoepiglottic fold(s)<br><i>EXCLUDES 2</i> malignant neoplasm of epiglottis (suprahyoid portion) NOS (C32.1)  |
| <b>C05.1 Malignant neoplasm of soft palate</b> <span style="float: right;">SL</span><br><i>EXCLUDES 2</i> malignant neoplasm of nasopharyngeal surface of soft palate (C11.3)  | <b>C10.2 Malignant neoplasm of lateral wall of oropharynx</b> <span style="float: right;">SL</span>   |
| <b>C05.2 Malignant neoplasm of uvula</b> <span style="float: right;">SL</span>   | <b>C10.3 Malignant neoplasm of posterior wall of oropharynx</b> <span style="float: right;">SL</span>   |
| <b>C05.8 Malignant neoplasm of overlapping sites of palate</b> <span style="float: right;">SL</span>   | <b>C10.4 Malignant neoplasm of branchial cleft</b> <span style="float: right;">SL</span><br>Malignant neoplasm of branchial cyst [site of neoplasm]   |
| <b>C05.9 Malignant neoplasm of palate, unspecified</b> <span style="float: right;">SL</span><br>Malignant neoplasm of roof of mouth  | <b>C10.8 Malignant neoplasm of overlapping sites of oropharynx</b> <span style="float: right;">SL</span><br>Malignant neoplasm of junctional region of oropharynx   |
| <b>√4th C06 Malignant neoplasm of other and unspecified parts of mouth</b><br>Use additional code to identify:<br>alcohol abuse and dependence (F10.-)<br>history of tobacco dependence (Z87.891)<br>tobacco dependence (F17.-)<br>tobacco use (Z72.0)   | <b>C10.9 Malignant neoplasm of oropharynx, unspecified</b> <span style="float: right;">SL</span>  |
| <b>C06.0 Malignant neoplasm of cheek mucosa</b> <span style="float: right;">SL</span><br>Malignant neoplasm of buccal mucosa NOS<br>Malignant neoplasm of internal cheek   |   |
| <b>C06.1 Malignant neoplasm of vestibule of mouth</b> <span style="float: right;">SL</span><br>Malignant neoplasm of buccal sulcus (upper) (lower)<br>Malignant neoplasm of labial sulcus (upper) (lower)  |   |
| <b>C06.2 Malignant neoplasm of retromolar area</b> <span style="float: right;">SL</span>   |   |
| <b>√5th C06.8 Malignant neoplasm of overlapping sites of other and unspecified parts of mouth</b><br><b>C06.80 Malignant neoplasm of overlapping sites of unspecified parts of mouth</b> <span style="float: right;">SL</span><br><b>C06.89 Malignant neoplasm of overlapping sites of other parts of mouth</b> <span style="float: right;">SL</span><br>"book leaf" neoplasm [ventral surface of tongue and floor of mouth] |   |
| <b>C06.9 Malignant neoplasm of mouth, unspecified</b> <span style="float: right;">SL</span><br>Malignant neoplasm of minor salivary gland, unspecified site<br>Malignant neoplasm of oral cavity NOS   |   |



**✓4th** G04 Encephalitis, myelitis and encephalomyelitis

**INCLUDES** acute ascending myelitis  
meningoencephalitis  
meningomyelitis

**EXCLUDES 1** encephalopathy NOS (G93.40)

**EXCLUDES 2** acute transverse myelitis (G37.3)  
alcoholic encephalopathy (G31.2)  
multiple sclerosis (G35)  
myalgic encephalomyelitis (G93.32)  
subacute necrotizing myelitis (G37.4)  
toxic encephalitis (G92.8)  
toxic encephalopathy (G92.8)

**DEF:** Encephalitis: Inflammation of the brain, often caused by viral or bacterial infection.

**DEF:** Encephalomyelitis: Inflammatory disease, often viral in nature, that affects the brain and spinal cord.

**DEF:** Myelitis: Inflammation of the spinal cord.

**✓5th** G04.0 Acute disseminated encephalitis and encephalomyelitis (ADEM)

**EXCLUDES 1** acute necrotizing hemorrhagic encephalopathy (G04.3-)  
other noninfectious acute disseminated encephalomyelitis (noninfectious ADEM) (G04.81)

**G04.00** Acute disseminated encephalitis and encephalomyelitis, unspecified ED CC

**RIC Excl:** 03 Non-traumatic brain injury

**G04.01** Postinfectious acute disseminated encephalitis and encephalomyelitis (postinfectious ADEM) ED CC

**EXCLUDES 1** post chickenpox encephalitis (B01.1)  
post measles encephalitis (B05.0)  
post measles myelitis (B05.1)

**RIC Excl:** 03 Non-traumatic brain injury

**G04.02** Postimmunization acute disseminated encephalitis, myelitis and encephalomyelitis ED

Encephalitis, post immunization  
Encephalomyelitis, post immunization

Use additional code to identify the vaccine (T50.A-, T50.B-, T50.Z-)

**G04.01** Tropical spastic paraplegia**G04.02** Bacterial meningoencephalitis and meningomyelitis, not elsewhere classified CC

**RIC Excl:** 03 Non-traumatic brain injury; 05 Non-traumatic spinal cord injury

**✓5th** G04.3 Acute necrotizing hemorrhagic encephalopathy

**EXCLUDES 1** acute disseminated encephalitis and encephalomyelitis (G04.0-)

**G04.30** Acute necrotizing hemorrhagic encephalopathy, unspecified ED CC

**RIC Excl:** 03 Non-traumatic brain injury

**G04.31** Postinfectious acute necrotizing hemorrhagic encephalopathy ED CC

**RIC Excl:** 03 Non-traumatic brain injury

**G04.32** Postimmunization acute necrotizing hemorrhagic encephalopathy ED

Use additional code to identify the vaccine (T50.A-, T50.B-, T50.Z-)

**G04.39** Other acute necrotizing hemorrhagic encephalopathy ED CC

Code also underlying etiology, if applicable

**RIC Excl:** 03 Non-traumatic brain injury

**✓5th** G04.8 Other encephalitis, myelitis and encephalomyelitis

Code also any associated seizure (G40.-, R56.9)

**G04.81** Other encephalitis and encephalomyelitis ED CC

Noninfectious acute disseminated encephalomyelitis (noninfectious ADEM)

**RIC Excl:** 03 Non-traumatic brain injury

**G04.82** Acute flaccid myelitis ED CC

**EXCLUDES 1** transverse myelitis (G37.3)

**AHA:** 2021,4Q,11

**RIC Excl:** 03 Non-traumatic brain injury

**G04.89** Other myelitis ED CC

**AHA:** 2020,1Q,14

**RIC Excl:** 03 Non-traumatic brain injury

**✓5th** G04.9 Encephalitis, myelitis and encephalomyelitis, unspecified**G04.90** Encephalitis and encephalomyelitis, unspecified ED CC

Ventriculitis (cerebral) NOS

**RIC Excl:** 03 Non-traumatic brain injury

**G04.91** Myelitis, unspecified ED CC

**RIC Excl:** 03 Non-traumatic brain injury

**✓4th** G05 Encephalitis, myelitis and encephalomyelitis in diseases classified elsewhere

Code first underlying disease, such as:

congenital toxoplasmosis encephalitis, myelitis and encephalomyelitis (P37.1)

cytomegaloviral encephalitis, myelitis and encephalomyelitis (B25.8)  
encephalitis, myelitis and encephalomyelitis (in) systemic lupus erythematosus (M32.19)

eosinophilic meningoencephalitis (B83.2)

human immunodeficiency virus [HIV] disease (B20)

poliovirus (A80.-)

suppurative otitis media (H66.01-H66.4)

systemic lupus erythematosus (M32.19)

trichinellosis (B75)

**EXCLUDES 1** adenoviral encephalitis, myelitis and encephalomyelitis (A85.1)  
encephalitis, myelitis and encephalomyelitis (in) measles (B05.0)  
enteroviral encephalitis, myelitis and encephalomyelitis (A85.0)  
herpesviral [herpes simplex] encephalitis, myelitis and encephalomyelitis (B00.4)

listerial encephalitis, myelitis and encephalomyelitis (A32.12)

meningococcal encephalitis, myelitis and encephalomyelitis (A39.81)

mumps encephalitis, myelitis and encephalomyelitis (B26.2)

postchickenpox encephalitis, myelitis and encephalomyelitis (B01.1-)

rubella encephalitis, myelitis and encephalomyelitis (B06.01)

toxoplasmosis encephalitis, myelitis and encephalomyelitis (B58.2)

zoster encephalitis, myelitis and encephalomyelitis (B02.0)

**G05.3** Encephalitis and encephalomyelitis in diseases classified elsewhere RP ED

Meningoencephalitis in diseases classified elsewhere

Code first underlying disease

**G05.4** Myelitis in diseases classified elsewhere RP ED CC

Meningomyelitis in diseases classified elsewhere

**RIC Excl:** 03 Non-traumatic brain injury

**✓4th** G06 Intracranial and intraspinal abscess and granuloma

Use additional code (B95-B97) to identify infectious agent

**DEF:** Abscess: Circumscribed collection of pus resulting from bacteria, frequently associated with swelling and other signs of inflammation.

**DEF:** Granuloma: Abnormal, dense collections of cells forming a mass or nodule of chronically inflamed tissue with granulations that is usually associated with an infective process.

**G06.0** Intracranial abscess and granuloma ED CC

Brain [any part] abscess (embolic)

Cerebellar abscess (embolic)

Cerebral abscess (embolic)

Intracranial epidural abscess or granuloma

Intracranial extradural abscess or granuloma

Intracranial subdural abscess or granuloma

Otogenic abscess (embolic)

**EXCLUDES 1** tuberculous intracranial abscess and granuloma (A17.81)

**RIC Excl:** 03 Non-traumatic brain injury

**G06.1** Intraspinal abscess and granuloma ED CC

Abscess (embolic) of spinal cord [any part]

Intraspinal epidural abscess or granuloma

Intraspinal extradural abscess or granuloma

Intraspinal subdural abscess or granuloma

**EXCLUDES 1** tuberculous intraspinal abscess and granuloma (A17.81)

**RIC Excl:** 03 Non-traumatic brain injury

**G06.2** Extradural and subdural abscess, unspecified CC

**RIC Excl:** 03 Non-traumatic brain injury

## Chapter 9. Diseases of the Circulatory System (I00–I99)

### Chapter-specific Guidelines with Coding Examples

The chapter-specific guidelines from the ICD-10-CM Official Guidelines for Coding and Reporting have been provided below. Along with these guidelines are coding examples, contained in the shaded boxes, that have been developed to help illustrate the coding and/or sequencing guidance found in these guidelines.

#### a. Hypertension

The classification presumes a causal relationship between hypertension and heart involvement and between hypertension and kidney involvement, as the two conditions are linked by the term “with” in the Alphabetic Index. These conditions should be coded as related even in the absence of provider documentation explicitly linking them, unless the documentation clearly states the conditions are unrelated.

For hypertension and conditions not specifically linked by relational terms such as “with,” “associated with” or “due to” in the classification, provider documentation must link the conditions in order to code them as related.

##### 1) Hypertension with heart disease

Hypertension with heart conditions classified to I50.- or I51.4–I51.7, I51.89, I51.9, are assigned to a code from category I11, Hypertensive heart disease. Use additional code(s) from category I50, Heart failure, to identify the type(s) of heart failure in those patients with heart failure. The same heart conditions (I50.-, I51.4–I51.7, I51.89, I51.9) with hypertension are coded separately if the provider has documented they are unrelated to the hypertension. Sequence according to the circumstances of the admission/encounter.

Patient is admitted in left heart failure. Patient also has a history of hypertension managed by medication.

**I11.0 Hypertensive heart disease with heart failure**

**I50.1 Left ventricular failure, unspecified**

*Explanation:* Without a diagnostic statement to the contrary, hypertension and heart failure have an assumed causal relationship, and a combination code should be used. An additional code to identify the type of heart failure (I50.-) should also be provided.

##### 2) Hypertensive chronic kidney disease

Assign codes from category I12, Hypertensive chronic kidney disease, when both hypertension and a condition classifiable to category N18, Chronic kidney disease (CKD), are present. CKD should not be coded as hypertensive if the provider indicates the CKD is not related to the hypertension.

The appropriate code from category N18 should be used as a secondary code with a code from category I12 to identify the stage of chronic kidney disease.

See Section I.C.14. Chronic kidney disease.

If a patient has hypertensive chronic kidney disease and acute renal failure, the acute renal failure should also be coded. Sequence according to the circumstances of the admission/encounter.

Patient is admitted with stage IV chronic kidney disease (CKD) due to polycystic kidney disease. Patient also is on lisinopril for hypertension.

**N18.4 Chronic kidney disease, stage 4 (severe)**

**Q61.3 Polycystic kidney, unspecified**

**I10 Essential (primary) hypertension**

*Explanation:* A combination code describing a relationship between hypertension and CKD is not used because the physician documentation identifies the polycystic kidney disease as the cause for the CKD.

##### 3) Hypertensive heart and chronic kidney disease

Assign codes from combination category I13, Hypertensive heart and chronic kidney disease, when there is hypertension with both heart and kidney involvement. If heart failure is present, assign an additional code from category I50 to identify the type of heart failure.

The appropriate code from category N18, Chronic kidney disease, should be used as a secondary code with a code from category I13 to identify the stage of chronic kidney disease.

See Section I.C.14. Chronic kidney disease.

The codes in category I13, Hypertensive heart and chronic kidney disease, are combination codes that include hypertension, heart disease and chronic kidney disease. The Includes note at I13 specifies that the

conditions included at I11 and I12 are included together in I13. If a patient has hypertension, heart disease and chronic kidney disease, then a code from I13 should be used, not individual codes for hypertension, heart disease and chronic kidney disease, or codes from I11 or I12.

For patients with both acute renal failure and chronic kidney disease, the acute renal failure should also be coded. Sequence according to the circumstances of the admission/encounter.

Hypertensive heart and kidney disease with congestive heart failure and stage 2 chronic kidney disease

**I13.0 Hypertensive heart and chronic kidney disease with heart failure and stage 1 through stage 4 chronic kidney disease, or unspecified chronic kidney disease**

**I50.9 Heart failure, unspecified**

**N18.2 Chronic kidney disease, stage 2 (mild)**

*Explanation:* Combination codes in category I13 are used to report conditions classifiable to both categories I11 and I12. Do not report conditions classifiable to I11 and I12 separately. Use additional codes to report type of heart failure and stage of CKD.

##### 4) Hypertensive cerebrovascular disease

For hypertensive cerebrovascular disease, first assign the appropriate code from categories I60–I69, followed by the appropriate hypertension code.

##### 5) Hypertensive retinopathy

Subcategory H35.0, Background retinopathy and retinal vascular changes, should be used along with a code from categories I10–I15, in the Hypertensive diseases section, to include the systemic hypertension. The sequencing is based on the reason for the encounter.

Hypertensive retinopathy of the right eye

**H35.031 Hypertensive retinopathy, right eye**

**I10 Essential (primary) hypertension**

*Explanation:* Hypertensive retinopathy requires two codes: the appropriate subcategory H35.0 code and a code for the hypertension.

##### 6) Hypertension, secondary

Secondary hypertension is due to an underlying condition. Two codes are required: one to identify the underlying etiology and one from category I15 to identify the hypertension. Sequencing of codes is determined by the reason for admission/encounter.

Renovascular hypertension due to renal artery atherosclerosis

**I15.0 Renovascular hypertension**

**I70.1 Atherosclerosis of renal artery**

*Explanation:* Secondary hypertension requires two codes: a code to identify the etiology and the appropriate I15 code.

##### 7) Hypertension, transient

Assign code R03.0, Elevated blood pressure reading without diagnosis of hypertension, unless patient has an established diagnosis of hypertension. Assign code O13.-, Gestational [pregnancy-induced] hypertension without significant proteinuria, or O14.-, Pre-eclampsia, for transient hypertension of pregnancy.

##### 8) Hypertension, controlled

This diagnostic statement usually refers to an existing state of hypertension under control by therapy. Assign the appropriate code from categories I10–I15, Hypertensive diseases.

##### 9) Hypertension, uncontrolled

Uncontrolled hypertension may refer to untreated hypertension or hypertension not responding to current therapeutic regimen. In either case, assign the appropriate code from categories I10–I15, Hypertensive diseases.

##### 10) Hypertensive crisis

Assign a code from category I16, Hypertensive crisis, for documented hypertensive urgency, hypertensive emergency or unspecified hypertensive crisis. Code also any identified hypertensive disease (I10–I15). The sequencing is based on the reason for the encounter.

|      |         |  |       |  |  |
|------|---------|--|-------|--|--|
|      | L97.908 | Non-pressure chronic ulcer of unspecified part of unspecified lower leg with other specified severity  | RP ED |  |  |
|      | L97.909 | Non-pressure chronic ulcer of unspecified part of unspecified lower leg with unspecified severity  | RP ED |  |  |
| √6th | L97.91  | Non-pressure chronic ulcer of unspecified part of right lower leg  |       |  |  |
|      | L97.911 | Non-pressure chronic ulcer of unspecified part of right lower leg limited to breakdown of skin   | ED    |  |  |
|      | L97.912 | Non-pressure chronic ulcer of unspecified part of right lower leg with fat layer exposed   | ED    |  |  |
|      | L97.913 | Non-pressure chronic ulcer of unspecified part of right lower leg with necrosis of muscle  | ED    |  |  |
|      | L97.914 | Non-pressure chronic ulcer of unspecified part of right lower leg with necrosis of bone  | ED    |  |  |
|      | L97.915 | Non-pressure chronic ulcer of unspecified part of right lower leg with muscle involvement without evidence of necrosis   | ED    |  |  |
|      | L97.916 | Non-pressure chronic ulcer of unspecified part of right lower leg with bone involvement without evidence of necrosis   | ED    |  |  |
|      | L97.918 | Non-pressure chronic ulcer of unspecified part of right lower leg with other specified severity  | ED    |  |  |
|      | L97.919 | Non-pressure chronic ulcer of unspecified part of right lower leg with unspecified severity  | ED    |  |  |
| √6th | L97.92  | Non-pressure chronic ulcer of unspecified part of left lower leg   |       |  |  |
|      | L97.921 | Non-pressure chronic ulcer of unspecified part of left lower leg limited to breakdown of skin  | ED    |  |  |
|      | L97.922 | Non-pressure chronic ulcer of unspecified part of left lower leg with fat layer exposed  | ED    |  |  |
|      | L97.923 | Non-pressure chronic ulcer of unspecified part of left lower leg with necrosis of muscle   | ED    |  |  |
|      | L97.924 | Non-pressure chronic ulcer of unspecified part of left lower leg with necrosis of bone   | ED    |  |  |
|      | L97.925 | Non-pressure chronic ulcer of unspecified part of left lower leg with muscle involvement without evidence of necrosis  | ED    |  |  |
|      | L97.926 | Non-pressure chronic ulcer of unspecified part of left lower leg with bone involvement without evidence of necrosis  | ED    |  |  |
|      | L97.928 | Non-pressure chronic ulcer of unspecified part of left lower leg with other specified severity   | ED    |  |  |
|      | L97.929 | Non-pressure chronic ulcer of unspecified part of left lower leg with unspecified severity   | ED    |  |  |
| √4th | L98     | Other disorders of skin and subcutaneous tissue, not elsewhere classified  |       |  |  |
|      | L98.0   | Pyogenic granuloma   | RP    |  |  |
|      |         | <b>EXCLUDES 2</b> pyogenic granuloma of gingiva (K06.8)<br>pyogenic granuloma of maxillary alveolar ridge (K04.5)<br>pyogenic granuloma of oral mucosa (K13.4)   |       |  |  |
|      |         | <b>DEF:</b> Solitary polypoid capillary hemangioma often associated with local irritation, trauma, and superimposed inflammation. Located on the skin and gingival or oral mucosa, they bleed easily and may ulcerate and form crusted sores.  |       |  |  |
|      | L98.1   | Factitial dermatitis   | RP    |  |  |
|      |         | Neurotic excoriation   |       |  |  |
|      |         | <b>EXCLUDES 1</b> excoriation (skin-picking) disorder (F42.4)  |       |  |  |
|      |         | <b>AHA:</b> 2016,4Q,15   |       |  |  |
|      |         | <b>DEF:</b> Self-inflicted skin lesions to satisfy an unconscious psychological or emotional need. Methods used to injure the skin include deep excoriations with a sharp instrument, scarification with a knife, or the application of caustic chemicals and burning, sometimes with a cigarette. |       |  |  |
|      | L98.2   | Febrile neutrophilic dermatosis [Sweet]  | RP    |  |  |
|      | L98.3   | Eosinophilic cellulitis [Wells]  | RP    |  |  |
| √5th | L98.4   | Non-pressure chronic ulcer of skin, not elsewhere classified   |       |  |  |
|      |         | Chronic ulcer of skin NOS  |       |  |  |
|      |         | Tropical ulcer NOS   |       |  |  |
|      |         | Ulcer of skin NOS  |       |  |  |
|      |         | <b>EXCLUDES 2</b> gangrene (I96)<br>pressure ulcer (pressure area) (L89.-)<br>skin infections (L00–L08)<br>specific infections classified to A00–B99<br>ulcer of lower limb NEC (L97.-)<br>varicose ulcer (I83.0–I83.93)   |       |  |  |
|      |         | <b>AHA:</b> 2017,4Q,17   |       |  |  |
|      |         | <b>TIP:</b> The depth and/or severity of a diagnosed nonpressure ulcer can be determined based on medical record documentation from clinicians who are not the patient's provider.   |       |  |  |
| √6th | L98.41  | Non-pressure chronic ulcer of buttock  |       |  |  |
|      | L98.411 | Non-pressure chronic ulcer of buttock limited to breakdown of skin   | ED    |  |  |
|      | L98.412 | Non-pressure chronic ulcer of buttock with fat layer exposed   | ED    |  |  |
|      | L98.413 | Non-pressure chronic ulcer of buttock with necrosis of muscle  | ED    |  |  |
|      | L98.414 | Non-pressure chronic ulcer of buttock with necrosis of bone  | ED    |  |  |
|      | L98.415 | Non-pressure chronic ulcer of buttock with muscle involvement without evidence of necrosis   | ED    |  |  |
|      | L98.416 | Non-pressure chronic ulcer of buttock with bone involvement without evidence of necrosis   | ED    |  |  |
|      | L98.418 | Non-pressure chronic ulcer of buttock with other specified severity  | ED    |  |  |
|      | L98.419 | Non-pressure chronic ulcer of buttock with unspecified severity  | ED    |  |  |
| √6th | L98.42  | Non-pressure chronic ulcer of back   |       |  |  |
|      | L98.421 | Non-pressure chronic ulcer of back limited to breakdown of skin  | ED    |  |  |
|      | L98.422 | Non-pressure chronic ulcer of back with fat layer exposed  | ED    |  |  |
|      | L98.423 | Non-pressure chronic ulcer of back with necrosis of muscle   | ED    |  |  |
|      | L98.424 | Non-pressure chronic ulcer of back with necrosis of bone   | ED    |  |  |
|      | L98.425 | Non-pressure chronic ulcer of back with muscle involvement without evidence of necrosis  | ED    |  |  |
|      | L98.426 | Non-pressure chronic ulcer of back with bone involvement without evidence of necrosis  | ED    |  |  |
|      | L98.428 | Non-pressure chronic ulcer of back with other specified severity   | ED    |  |  |
|      | L98.429 | Non-pressure chronic ulcer of back with unspecified severity   | ED    |  |  |
| √6th | L98.49  | Non-pressure chronic ulcer of skin of other sites  |       |  |  |
|      |         | Non-pressure chronic ulcer of skin NOS   |       |  |  |
|      | L98.491 | Non-pressure chronic ulcer of skin of other sites limited to breakdown of skin   | ED    |  |  |
|      | L98.492 | Non-pressure chronic ulcer of skin of other sites with fat layer exposed   | ED    |  |  |
|      | L98.493 | Non-pressure chronic ulcer of skin of other sites with necrosis of muscle  | ED    |  |  |
|      | L98.494 | Non-pressure chronic ulcer of skin of other sites with necrosis of bone  | ED    |  |  |
|      | L98.495 | Non-pressure chronic ulcer of skin of other sites with muscle involvement without evidence of necrosis   | ED    |  |  |
|      | L98.496 | Non-pressure chronic ulcer of skin of other sites with bone involvement without evidence of necrosis   | ED    |  |  |
|      | L98.498 | Non-pressure chronic ulcer of skin of other sites with other specified severity  | ED    |  |  |
|      | L98.499 | Non-pressure chronic ulcer of skin of other sites with unspecified severity  | ED    |  |  |

- Q18.1 Preauricular sinus and cyst** RP  
Cervicoaural fistula  
Fistula of auricle, congenital
- Q18.2 Other branchial cleft malformations** RP  
Branchial cleft malformation NOS  
Cervical auricle  
Otocephaly
- Q18.3 Webbing of neck** RP  
Pterygium colli  
**DEF:** Congenital malformation characterized by a thick, triangular skinfold that stretches from the lateral side of the neck across the shoulder. It is associated with genetic conditions such as Turner's and Noonan's syndromes.
- Q18.4 Macrostomia** RP  
**DEF:** Rare congenital craniofacial bilateral or unilateral anomaly of the mouth due to malformed maxillary and mandibular processes. It results in an abnormally large mouth extending toward the ear.
- Q18.5 Microstomia** RP
- Q18.6 Macrocheilia** RP  
Hypertrophy of lip, congenital
- Q18.7 Microcheilia** RP
- Q18.8 Other specified congenital malformations of face and neck** RP  
Medial cyst of face and neck  
Medial fistula of face and neck  
Medial sinus of face and neck
- Q18.9 Congenital malformation of face and neck, unspecified** RP  
Congenital anomaly NOS of face and neck

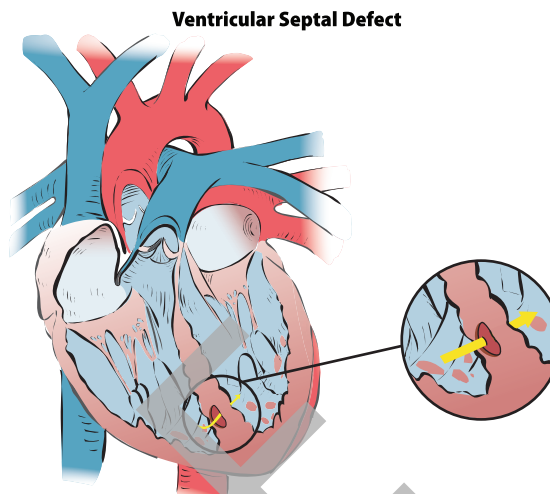
**Congenital malformations of the circulatory system (Q20-Q28)**

- Q20 Congenital malformations of cardiac chambers and connections** ✓4#  
**EXCLUDES 1** dextrocardia with situs inversus (Q89.3)  
mirror-image atrial arrangement with situs inversus (Q89.3)
- Q20.0 Common arterial trunk**  
Persistent truncus arteriosus  
**EXCLUDES 1** aortic septal defect (Q21.4)
- Q20.1 Double outlet right ventricle**  
Taussig-Bing syndrome
- Q20.2 Double outlet left ventricle**
- Q20.3 Discordant ventriculoarterial connection**  
Dextrotransposition of aorta  
Transposition of great vessels (complete)
- Q20.4 Double inlet ventricle**  
Common ventricle  
Cor triloculare batriatum  
Single ventricle
- Q20.5 Discordant atrioventricular connection**  
Corrected transposition  
Levotransposition  
Ventricular inversion
- Q20.6 Isomerism of atrial appendages**  
Isomerism of atrial appendages with asplenia or polysplenia
- Q20.8 Other congenital malformations of cardiac chambers and connections**  
Cor binoculare
- Q20.9 Congenital malformation of cardiac chambers and connections, unspecified**

**Q21 Congenital malformations of cardiac septa** ✓4#

**EXCLUDES 1** acquired cardiac septal defect (I51.0)

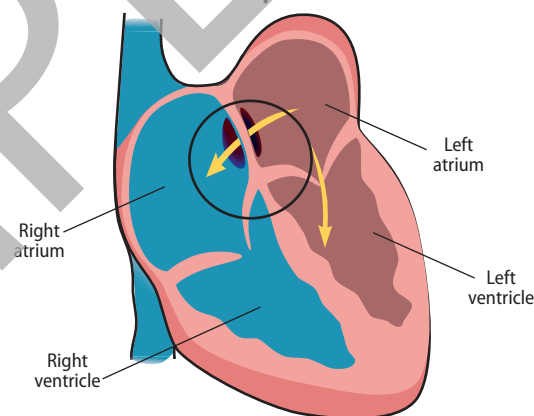
**Q21.0 Ventricular septal defect**  
Roger's disease



**Q21.1 Atrial septal defect** ✓5#

**EXCLUDES 2** ostium primum atrial septal defect (type I) (Q21.20)  
**AHA:** 2022,4Q,39-40

**Atrial Septal Defect**



- Q21.10 Atrial septal defect, unspecified**
- Q21.11 Secundum atrial septal defect**  
Fenestrated atrial septum  
Patent or persistent ostium secundum defect (type II)
- Q21.12 Patent foramen ovale**  
Persistent foramen ovale
- Q21.13 Coronary sinus atrial septal defect**  
Coronary sinus defect  
Unroofed coronary sinus
- Q21.14 Superior sinus venosus atrial septal defect**  
Superior vena cava type atrial septal defect
- Q21.15 Inferior sinus venosus atrial septal defect**  
Inferior vena cava type atrial septal defect
- Q21.16 Sinus venosus atrial septal defect, unspecified**  
Sinus venosus defect, NOS
- Q21.19 Other specified atrial septal defect**  
Common atrium  
Other specified atrial septal abnormality

# Appendix D: Skilled Nursing Facility Patient-Driven Payment Model

## Skilled Nursing Facility Patient-Driven Payment Model

### Payment Calculation Under PDPM

Payment under the Skilled Nursing Facility Patient-Driven Payment Model (PDPM) is based on the sum of six payment components. These include the following:

- Physical therapy
- Occupational therapy
- Speech-language pathology
- Nursing
- Nontherapy ancillary
- Noncase-mix

The first five components are case-mix adjusted to capture the varied needs and characteristics of a resident's care. The sixth component is a noncase-mix component that covers utilization of resources that do not fluctuate according to patient characteristics.

The payment for each component is calculated by multiplying the case-mix index (CMI) for the resident's group, first by the component federal base payment rate, then by the specific day in the variable per diem adjustment schedule, when applicable. Additionally, for residents with HIV/AIDS indicated on their claim, the nursing portion of payment is multiplied by 1.18. These payments are then added, along with the noncase-mix component payment rate, to create a resident's total SNF PPS per diem rate under the PDPM.

### Functional and Cognitive Scoring Under PDPM

Functional status, the ability to conduct certain activities, and cognitive function, the presence or absence of any sort of impairment in cognition, are two important patient characteristics for assessing the care needs of a resident. In the PDPM, this information is calculated using data from section GG of the Minimum Data Set (MDS) 3.0 which offers standardized, comprehensive measures of functional status and therapy needs. Functional scores are calculated for the physical therapy, occupational therapy, and nursing components.

Cognitive scores are used in the calculation of the SLP component. The PDPM Cognitive Score is based on the Cognitive Function Scale (CFS), which combines scores from a Brief Interview for Mental Status (BIMS) score and Cognitive Performance Scale (CPS) score.

### Physical Therapy and Occupational Therapy Components

Both the physical therapy (PT) and occupational therapy (OT) components use a resident's PDPM clinical category and the resident's functional status to assign a resident to a PT/OT case-mix group (CMG).

#### PDPM Clinical Categories

SNF residents are classified based on the primary diagnosis for the SNF stay, using item I0020 on the MDS 3.0. The clinical classification may then be adjusted when the resident received a surgical intervention during the preceding hospital stay associated with that diagnosis. The provider must indicate the type of surgical procedure performed by selecting, as necessary, a surgical procedure category within item J2100 on the MDS 3.0. If the resident did not receive a related surgical procedure during the prior hospital stay, the resident may be categorized into a nonsurgical clinical category. Based on the provisions outlined above, the resident is classified into one of the following 10 clinical categories:

Surgical category:

- Major Joint Replacement or Spinal Surgery
- Nonorthopaedic Surgery
- Orthopedic Surgery (Except Major Joint Replacement or Spinal Surgery)

Nonsurgical category:

- Acute Neurologic
- Nonsurgical Orthopedic/Musculoskeletal
- Medical Management
- Acute Infections
- Cancer
- Pulmonary
- Cardiovascular and Coagulations

#### Collapsed Clinical Categories for PT and OT

Once CMS identified the default clinical categories as those being generally predictive of resource utilization in a SNF, they then undertook the necessary work to identify those categories predictive of PT and OT costs specifically. CMS found that the 10 inpatient clinical categories could be collapsed into four clinical categories, which predict varying degrees of PT and OT costs (see table 1).

**Table 1. Collapsed Clinical Categories for PT and OT Classification**

| PDPM Clinical Category   | Collapsed PT and OT Clinical Category       |
|--|---|
| Major Joint Replacement or Spinal Surgery  | Major Joint Replacement or Spinal Surgery   |
| Non-Orthopedic Surgery<br>Acute Neurologic   | Non-Orthopedic Surgery and Acute Neurologic |
| Non-Surgical Orthopedic/Musculoskeletal<br>Orthopedic Surgery (Except Major Joint Replacement or Spinal Surgery) | Other Orthopedic                            |
| Medical Management<br>Acute Infections<br>Cancer<br>Pulmonary<br>Cardiovascular and Coagulations                 | Medical Management                          |

#### Functional Score for PT and OT

Regression analyses demonstrated that the resident's functional status is also predictive of PT and OT costs in addition to the resident's initial clinical categorization. CMS constructed a new functional score for PT and OT payment based on the newer, IMPACT Act compliant items from section GG of the MDS 3.0 (see table 2).

**Table 2. Section GG Items Included in PT and OT Functional Measure**

| Section GG Item Number | Section GG Item Description               |
|------------------------|---|
| GG0130A                | Self-care: Eating                         |
| GG0130B                | Self-care: Oral hygiene                   |
| GG0130C                | Self-care: Toileting hygiene              |
| GG0170B                | Mobility: Sit to lying                    |
| GG0170C                | Mobility: Lying to sitting on side of bed |
| GG0170D                | Mobility: Sit to stand                    |
| GG0170E                | Mobility: Chair/bed-to-chair transfer     |
| GG1070F                | Mobility: Toilet transfer                 |
| GG0170I                | Mobility: Walk 10 feet                    |
| GG0170J                | Mobility: Walk 50 feet with 2 turns       |
| GG0170K                | Mobility: Walk 150 feet                   |

#### PT and OT Case-Mix Groups

Under the PDPM, all residents are classified into one and only one of the 16 PT and OT case-mix groups for each of the two components.

These groups classify residents based on the two resident characteristics shown to be most predictive of PT and OT utilization: Clinical category and function score. CMS believes that these PT and OT case-mix groups better reflect relative resource use of clinically relevant resident subpopulations and therefore provide for more appropriate payment under the SNF PPS.

PT and OT case-mix classification groups:

TA, TB, TC, TD, TE, TF, TG, TH, TI, TJ, TK, TL, TM, TN, TO, TP

### Speech-Language Pathology Component

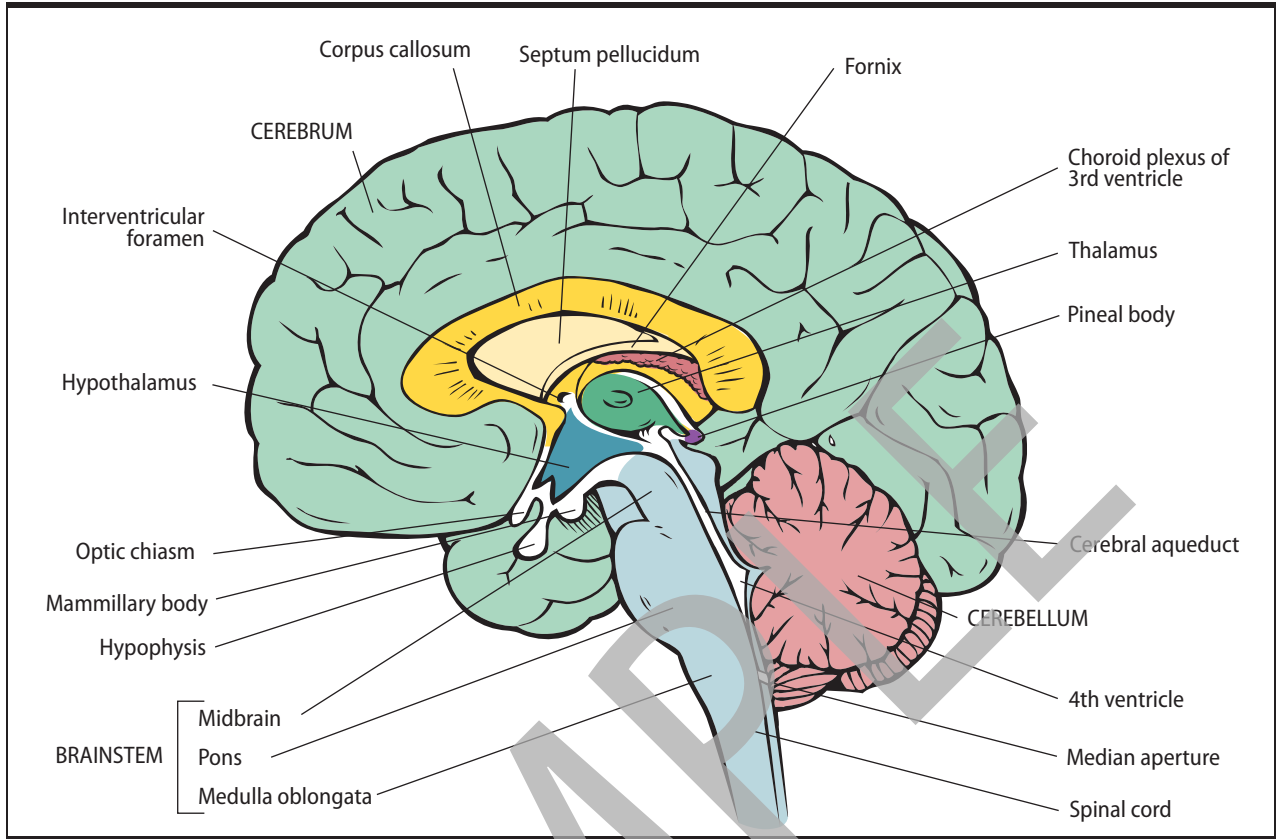
The speech-language pathology (SLP) component uses the resident's PDPM clinical category, cognitive function, the presence of an SLP-related comorbidity, and the presence of a swallowing disorder or mechanically altered diet to assign a resident to an SLP CMG.

#### PDPM Clinical Categories

CMS found only one clinical category predictive of increased SLP costs; the above criteria can be captured only if a resident is classified to the Acute Neurologic clinical category.

## Chapter 6. Diseases of the Nervous System (G00–G99)

**Brain**



**Cranial Nerves**

