

# **ICD-10-CM Professional for Physicians**

**The complete official guidelines and code set**

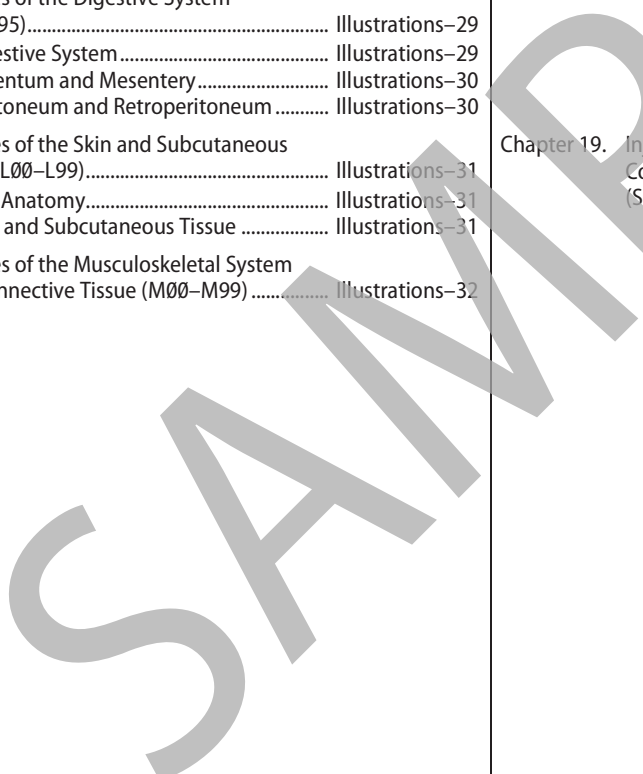
Codes valid from October 1, 2025  
through September 30, 2026

SAMPLE

# Contents

<b>How to Use ICD-10-CM Professional for Physicians 2026.....</b>	<b>iii</b>	Chapter 13. Diseases of the Musculoskeletal System and Connective Tissue (M00–M99) .....	767
Introduction .....	iii	Chapter 14. Diseases of Genitourinary System (N00–N99).....	857
What’s New for 2026.....	iii	Chapter 15. Pregnancy, Childbirth, and the Puerperium (O00–O9A).....	879
Conversion Table .....	iii	Chapter 16. Certain Conditions Originating in the Perinatal Period (P00–P96) .....	919
10 Steps to Correct Coding.....	iii	Chapter 17. Congenital Malformations, Deformations, and Chromosomal Abnormalities (Q00–Q99) .....	933
Official ICD-10-CM Guidelines for Coding and Reporting .....	iii	Chapter 18. Symptoms, Signs, and Abnormal Clinical and Laboratory Findings, Not Elsewhere Classified (R00–R99) .....	953
Indexes .....	iii	Chapter 19. Injury, Poisoning, and Certain Other Consequences of External Causes (S00–T88) .....	975
Index to Diseases and Injuries .....	iii	Chapter 20. External Causes of Morbidity (V00–Y99) .....	1175
Neoplasm Table.....	iii	Chapter 21. Factors Influencing Health Status and Contact with Health Services (Z00–Z99) .....	1241
Table of Drugs and Chemicals .....	iii	Chapter 22. Codes for Special Purposes (U00–U85).....	1281
External Causes Index .....	iii	<b>Illustrations..... Illustrations–1</b>	
Index Notations .....	iv	Chapter 3. Diseases of the Blood and Blood-forming Organs and Certain Disorders Involving the Immune Mechanism (D50–D89).....	Illustrations–1
Tabular List of Diseases .....	v	Red Blood Cells.....	Illustrations–1
Code and Code Descriptions.....	v	White Blood Cell.....	Illustrations–1
Tabular Notations .....	v	Platelet .....	Illustrations–2
Official Notations .....	v	Coagulation.....	Illustrations–2
Optum Notations .....	vi	Spleen Anatomical Location and External Structures.....	Illustrations–3
Icons .....	vi	Spleen Interior Structures.....	Illustrations–3
Color Bars .....	vii	Chapter 4. Endocrine, Nutritional, and Metabolic Diseases (E00–E89).....	Illustrations–4
Chapter-Level Notations .....	vii	Endocrine System .....	Illustrations–4
Illustrations.....	vii	Thyroid .....	Illustrations–5
<b>What’s New for 2026 .....</b>	<b>viii</b>	Thyroid and Parathyroid Glands .....	Illustrations–5
Official Updates .....	viii	Pancreas.....	Illustrations–6
Proprietary Updates .....	viii	Anatomy of the Adrenal Gland .....	Illustrations–6
<b>Conversion Table of ICD-10-CM Codes .....</b>	<b>ix</b>	Structure of an Ovary.....	Illustrations–7
<b>10 Steps to Correct Coding.....</b>	<b>xi</b>	Testis and Associated Structures .....	Illustrations–7
<b>ICD-10-CM Official Guidelines for Coding and Reporting .....</b>	<b>Coding Guidelines–1</b>	Thymus.....	Illustrations–8
<b>ICD-10-CM Index to Diseases and Injuries .....</b>	<b>1</b>	Chapter 6. Diseases of the Nervous System (G00–G99).....	Illustrations–9
<b>ICD-10-CM Neoplasm Table .....</b>	<b>339</b>	Brain.....	Illustrations–9
<b>ICD-10-CM Table of Drugs and Chemicals .....</b>	<b>358</b>	Cranial Nerves.....	Illustrations–9
<b>ICD-10-CM Index to External Causes.....</b>	<b>408</b>	Peripheral Nervous System .....	Illustrations–10
<b>ICD-10-CM Tabular List of Diseases and Injuries .....</b>	<b>445</b>	Spinal Cord and Spinal Nerves .....	Illustrations–11
Chapter 1. Certain Infectious and Parasitic Diseases (A00–B99), U07.1, U09.9 .....	445	Nerve Cell.....	Illustrations–12
Chapter 2. Neoplasms (C00–D49) .....	471	Trigeminal and Facial Nerve Branches ....	Illustrations–12
Chapter 3. Diseases of the Blood and Blood-forming Organs and Certain Disorders Involving the Immune Mechanism (D50–D89) .....	513	Chapter 7. Diseases of the Eye and Adnexa (H00–H59) .....	Illustrations–13
Chapter 4. Endocrine, Nutritional, and Metabolic Diseases (E00–E89) .....	527	Eye .....	Illustrations–13
Chapter 5. Mental, Behavioral, and Neurodevelopmental Disorders (F01–F99).....	553	Posterior Pole of Globe/Flow of Aqueous Humor .....	Illustrations–13
Chapter 6. Diseases of the Nervous System (G00–G99).....	585	Lacrimal System .....	Illustrations–14
Chapter 7. Diseases of the Eye and Adnexa (H00–H59).....	609	Eye Musculature.....	Illustrations–14
Chapter 8. Diseases of the Ear and Mastoid Process (H60–H95) .....	645	Eyelid Structures .....	Illustrations–14
Chapter 9. Diseases of the Circulatory System (I00–I99) .....	657	Chapter 8. Diseases of the Ear and Mastoid Process (H60–H95) .....	Illustrations–15
Chapter 10. Diseases of the Respiratory System (J00–J99), U07.0 .....	703	Ear Anatomy.....	Illustrations–15
Chapter 11. Diseases of the Digestive System (K00–K95) .....	719	Chapter 9. Diseases of the Circulatory System (I00–I99) .....	Illustrations–16
Chapter 12. Diseases of the Skin and Subcutaneous Tissue (L00–L99) .....	745	Anatomy of the Heart.....	Illustrations–16

Heart Cross Section.....	Illustrations–16	Bones and Joints.....	Illustrations–32
Heart Valves.....	Illustrations–17	Shoulder Anterior View.....	Illustrations–33
Heart Conduction System.....	Illustrations–17	Shoulder Posterior View.....	Illustrations–33
Coronary Arteries.....	Illustrations–18	Elbow Anterior View.....	Illustrations–33
Arteries.....	Illustrations–19	Elbow Posterior View.....	Illustrations–33
Veins.....	Illustrations–20	Hand.....	Illustrations–33
Internal Carotid and Vertebral		Hip Anterior View.....	Illustrations–34
Arteries and Branches.....	Illustrations–21	Hip Posterior View.....	Illustrations–34
External Carotid Artery and Branches.....	Illustrations–21	Knee Anterior View.....	Illustrations–34
Branches of Abdominal Aorta.....	Illustrations–22	Knee Posterior View.....	Illustrations–34
Portal Venous Circulation.....	Illustrations–22	Foot.....	Illustrations–34
Lymphatic System.....	Illustrations–23	Muscles.....	Illustrations–35
Axillary Lymph Nodes.....	Illustrations–24		
Lymphatic System of Head and Neck.....	Illustrations–24	Chapter 14. Diseases of Genitourinary	
Lymphatic Capillaries.....	Illustrations–25	System (N00–N99).....	Illustrations–36
Lymphatic Drainage.....	Illustrations–25	Urinary System.....	Illustrations–36
Chapter 10. Diseases of the Respiratory		Male Genitourinary System.....	Illustrations–37
System (J00–J99), U07.0.....	Illustrations–26	Female Internal Genitalia.....	Illustrations–37
Respiratory System.....	Illustrations–26	Female Genitourinary Tract Lateral	
Upper Respiratory System.....	Illustrations–27	View.....	Illustrations–37
Lower Respiratory System.....	Illustrations–27	Chapter 15. Pregnancy, Childbirth, and the	
Paranasal Sinuses.....	Illustrations–27	Puerperium (O00–O9A).....	Illustrations–38
Lung Segments.....	Illustrations–28	Term Pregnancy – Single	
Alveoli.....	Illustrations–28	Gestation.....	Illustrations–38
		Twin Gestation–Dichorionic–	
Chapter 11. Diseases of the Digestive System		Diamniotic (DI-DI).....	Illustrations–38
(K00–K95).....	Illustrations–29	Twin Gestation–Monochorionic–	
Digestive System.....	Illustrations–29	Diamniotic (MO-DI).....	Illustrations–39
Omentum and Mesentery.....	Illustrations–30	Twin Gestation–Monochorionic–	
Peritoneum and Retroperitoneum.....	Illustrations–30	Monoamniotic (MO-MO).....	Illustrations–39
		Chapter 19. Injury, Poisoning, and Certain Other	
Chapter 12. Diseases of the Skin and Subcutaneous		Consequences of External Causes	
Tissue (L00–L99).....	Illustrations–31	(S00–T88).....	Illustrations–40
Nail Anatomy.....	Illustrations–31	Types of Fractures.....	Illustrations–40
Skin and Subcutaneous Tissue.....	Illustrations–31	Salter-Harris Fracture Types.....	Illustrations–40
Chapter 13. Diseases of the Musculoskeletal System			
and Connective Tissue (M00–M99).....	Illustrations–32		



# How to Use ICD-10-CM Professional for Physicians 2026

## Introduction

*ICD-10-CM Professional for Physicians: The Complete Official Code Set* is your definitive coding resource, combining the work of the National Center for Health Statistics (NCHS), Centers for Medicare and Medicaid Services (CMS), American Hospital Association (AHA), and Optum experts to provide the information you need for coding accuracy.

The International Classification of Diseases, 10th Revision, Clinical Modification (ICD-10-CM), is an adaptation of ICD-10, copyrighted by the World Health Organization (WHO). The development and maintenance of this clinical modification (CM) is the responsibility of the NCHS as authorized by WHO. Any new concepts added to ICD-10-CM are based on an established update process through the collaboration of WHO's Update and Revision Committee and the ICD-10-CM Coordination and Maintenance Committee.

In addition to the ICD-10-CM classification, other official government source information has been included in this manual. Depending on the source, updates to information may be annual or quarterly. This manual provides the most current information that was available at the time of publication. For updates to the source documents that may have occurred after this manual was published, please refer to the following:

- **NCHS, International Classification of Diseases, Tenth Revision, Clinical Modification (ICD-10-CM)**  
<https://www.cms.gov/medicare/coding-billing/icd-10-codes/2025-icd-10-cm>
- **CMS Integrated Outpatient Code Editor (IOCE), version 25.2**  
<https://www.cms.gov/Medicare/Coding/OutpatientCodeEdit/OCEQtrReleaseSpecs.html>
- **CMS-HCC Risk Adjustment Model, version 28**
- **CMS ESRD-HCC Risk Adjustment Model, version 24**
- **CMS RxHCC Risk Adjustment Model, version 03**  
<https://www.cms.gov/Medicare/Health-Plans/MedicareAdvtgSpecRateStats/Risk-Adjustors.html>
- **HHS-HCC Commercial Risk Adjustment Model, version 07**  
<https://www.cms.gov/CCIIO/Resources/Regulations-and-Guidance>
- **CMS Quality Payment Program (QPP)**  
<https://qpp.cms.gov/mips/explore-measures>
- **AHA Coding Clinics**  
<https://www.codingclinicadvisor.com/>

Significant updates to this manual will be provided on our product updates page at [optumcoding.com](https://www.optumcoding.com), which can be accessed at the following:

<https://www.optumcoding.com/ProductUpdates/>  
Password: XXXXXX

The official NCHS ICD-10-CM classification includes three main sections: the guidelines, the indexes, and the tabular list, all of which make up the bulk of this coding manual. To complement the classification, Optum's coding experts have incorporated Medicare-related coding edits and proprietary features, such as supplementary notations, coding tools, and appendixes, into a comprehensive and easy-to-use reference. This publication is organized as follows:

## What's New for 2026

This section provides a high-level overview of the code changes made for fiscal 2025. The list of codes provided identifies new, revised, and deleted codes. Asterisked codes identify prior midyear changes that were made to

the classification, effective April 1, 2024. All changes are based on official addenda, provided by the NCHS.

## Conversion Table

The conversion table was developed by NCHS to help facilitate data retrieval as new codes are added to the ICD-10-CM classification. This table provides a crosswalk from each fiscal 2025 new code to the equivalent code(s) assigned, prior to October 1, 2024, for that diagnosis or condition. Asterisked codes identify prior midyear additions, effective April 1, 2024. For the full conversion table, refer to the Conversion Table zip file at <https://www.cms.gov/medicare/coding-billing/icd-10-codes/2025-icd-10-cm>.

## 10 Steps to Correct Coding

This step-by-step tutorial walks the coder through the process of finding the correct code — from locating the code in the official indexes to verifying the code in the tabular section — while following applicable conventions, guidelines, and instructional notes. Specific examples are provided with detailed explanations of each coding step along with advice for proper sequencing.

## Official ICD-10-CM Guidelines for Coding and Reporting

This section provides the full official conventions and guidelines regulating the appropriate assignment and reporting of ICD-10-CM codes. These conventions and guidelines are published by the U.S. Department of Health and Human Services (DHHS) and approved by the cooperating parties (American Health Information Management Association [AHIMA], NCHS, Centers for Disease Control and Prevention [CDC], and the American Hospital Association [AHA]).

## Indexes

### Index to Diseases and Injuries

The Index to Diseases and Injuries is arranged in alphabetic order by terms specific to a disease, condition, illness, injury, eponym, or abbreviation as well as terms that describe circumstances other than a disease or injury that may require attention from a health care professional.

### Neoplasm Table

The Neoplasm Table is arranged in alphabetic order by anatomical site. Codes are then listed in individual columns based upon the histological behavior (malignant, in situ, benign, uncertain, or unspecified) of the neoplasm.

### Table of Drugs and Chemicals

The Table of Drugs and Chemicals is arranged in alphabetic order by the specific drug or chemical name. Codes are listed in individual columns based upon the associated intent (poisoning, adverse effect, or underdosing). Drugs with an asterisk identify substances added to the table by Optum subject matter experts.

### External Causes Index

The External Causes Index is arranged in alphabetic order by main terms that describe the cause, the intent, the place of occurrence, the activity, and the status of the patient at the time the injury occurred or health condition arose.

# ICD-10-CM Index to Diseases and Injuries

## A

**Aarskog's syndrome** Q87.19

**Abandonment** — see Maltreatment

**Abasia** (-astasia) (hysterical) F44.4

**Abderhalden-Kaufmann-Lignac syndrome** (cystinosis) E72.04

**Abdomen, abdominal** — see also condition

acute R10.0

angina K55.1

muscle deficiency syndrome Q79.4

**Abdominalgia** — see Pain, abdominal

**Abduction contracture, hip or other joint** — see Contraction, joint

**Aberrant** (congenital) — see also Malposition, congenital

adrenal gland Q89.1

artery (peripheral) Q27.8

basilar NEC Q28.1

cerebral Q28.3

coronary Q24.5

digestive system Q27.8

eye Q15.8

lower limb Q27.8

precerebral Q28.1

pulmonary Q25.79

renal Q27.2

retina Q14.1

specified site NEC Q27.8

subclavian Q27.8

upper limb Q27.8

vertebral Q28.1

breast Q83.8

endocrine gland NEC Q89.2

hepatic duct Q44.5

pancreas Q45.3

parathyroid gland Q89.2

pituitary gland Q89.2

sebaceous glands, mucous membrane, mouth, congenital Q38.6

spleen Q89.09

subclavian artery Q27.8

thymus (gland) Q89.2

thyroid gland Q89.2

vein (peripheral) NEC Q27.8

cerebral Q28.3

digestive system Q27.8

lower limb Q27.8

precerebral Q28.1

specified site NEC Q27.8

upper limb Q27.8

**Aberration**

distantal — see Disturbance, visual

mental F99

**Abetalipoproteinemia** E78.6

**Abiotrophy** R68.89

**Ablatio, ablation**

retinae — see Detachment, retina

**Ablepharia, ablepharon** Q10.3

**Abnormal, abnormality, abnormalities** — see also

Anomaly

acid-base balance (mixed) E87.4

albumin R77.0

alphafetoprotein R77.2

alveolar ridge K08.9

anatomical relationship Q89.9

apertures, congenital, diaphragm Q79.1

atrial septal, specified NEC Q21.19

auditory perception H93.29-

diplacusis — see Diplacusis

hyperacusis — see Hyperacusis

recruitment — see Recruitment, auditory

threshold shift — see Shift, auditory threshold

autosomes Q99.9

fragile site Q95.5

basal metabolic rate R94.8

biosynthesis, testicular androgen E29.1

bleeding time R79.1

blood amino-acid level R79.83

blood level (of)

cobalt R79.0

copper R79.0

iron R79.0

**Abnormal, abnormality, abnormalities** — continued

blood level — continued

lithium R78.89

magnesium R79.0

mineral NEC R79.0

zinc R79.0

blood pressure

elevated R03.0

low reading (nonspecific) R03.1

blood sugar R73.09

blood-gas level R79.81

bowel sounds R19.15

absent R19.11

hyperactive R19.12

brain scan R94.02

breathing R06.9

caloric test R94.138

cerebrospinal fluid R83.9

cytology R83.6

drug level R83.2

enzyme level R83.0

hormones R83.1

immunology R83.4

microbiology R83.5

nonmedicinal level R83.3

specified type NEC R83.8

chemistry, blood R79.9

C-reactive protein R79.82

drugs — see Findings, abnormal, in blood

gas level R79.81

minerals R79.0

pancytopenia D61.818

PTT R79.1

specified NEC R79.89

toxins — see Findings, abnormal, in blood

chest sounds (friction) (rales) R09.89

chromosome, chromosomal Q99.9

with more than three X chromosomes, female Q97.1

analysis result R89.8

bronchial washings R84.8

cerebrospinal fluid R83.8

cervix uteri NEC R87.89

nasal secretions R84.8

nipple discharge R89.8

peritoneal fluid R85.89

pleural fluid R84.8

prostatic secretions R86.8

saliva R85.89

semenal fluid R86.8

sputum R84.8

synovial fluid R89.8

throat scrapings R84.8

vagina R87.89

vulva R87.89

wound secretions R89.8

dicentric replacement Q93.2

ring replacement Q93.2

sex Q99.8

female phenotype Q97.9

specified NEC Q97.8

male phenotype Q98.9

specified NEC Q98.8

structural male Q98.6

specified NEC Q99.8

clinical findings NEC R68.89

coagulation D68.9

newborn, transient P61.6

profile R79.1

time R79.1

communication — see Fistula

conjunctiva, vascular H11.41-

coronary artery Q24.5

cortisol-binding globulin E27.8

course, eustachian tube Q17.8

creatinine clearance R94.4

cytology

anus R85.619

atypical squamous cells cannot exclude high grade

squamous intraepithelial lesion (ASC-H)

R85.611

atypical squamous cells of undetermined signifi-

cance (ASC-US) R85.610

cytologic evidence of malignancy R85.614

**Abnormal, abnormality, abnormalities** — continued

cytology — continued

anus — continued

high grade squamous intraepithelial lesion (HGSIL)

R85.613

human papillomavirus (HPV) DNA test

high risk positive R85.81

low risk positive R85.82

inadequate smear R85.615

low grade squamous intraepithelial lesion (LGSIL)

R85.612

satisfactory anal smear but lacking transformation

zone R85.616

specified NEC R85.618

unsatisfactory smear R85.615

female genital organs — see Abnormal, Papanicolaou

(smear)

dark adaptation curve H53.61

dentofacial NEC — see Anomaly, dentofacial

development, developmental Q89.9

central nervous system Q07.9

diagnostic imaging

abdomen, abdominal region NEC R93.5

biliary tract R93.2

bladder R93.41

breast R92.8

central nervous system NEC R90.89

cerebrovascular NEC R90.89

coronary circulation R93.1

digestive tract NEC R93.3

gastrointestinal (tract) R93.3

genitourinary organs R93.89

head R93.0

heart R93.1

intrathoracic organ NEC R93.89

kidney R93.42-

limbs R93.6

liver R93.2

lung (field) R91.8

musculoskeletal system NEC R93.7

renal pelvis R93.41

retroperitoneum R93.5

site specified NEC R93.89

skin and subcutaneous tissue R93.89

skull R93.0

testis R93.81-

ureter R93.41

urinary organs specified NEC R93.49

direction, teeth, fully erupted M26.30

ear ossicles, acquired NEC H74.39-

ankylosis — see Ankylosis, ear ossicles

discontinuity — see Discontinuity, ossicles, ear

partial loss — see Loss, ossicles, ear (partial)

Ebstein Q22.5

echocardiogram R93.1

echoencephalogram R90.81

echogram — see Abnormal, diagnostic imaging

electrocardiogram [ECG] [EKG] R94.31

electroencephalogram [EEG] R94.01

electrolyte — see Imbalance, electrolyte

electromyogram [EMG] R94.131

electro-oculogram [EOG] R94.110

electrophysiological intracardiac studies R94.39

electroretinogram [ERG] R94.111

erythrocytes

congenital, with perinatal jaundice D58.9

feces (color) (contents) (mucus) R19.5

finding — see Findings, abnormal, without diagnosis

fluid

amniotic — see Abnormal, specimen, specified

cerebrospinal — see Abnormal, cerebrospinal fluid

peritoneal — see Abnormal, specimen, digestive or-

gans

pleural — see Abnormal, specimen, respiratory organs

synovial — see Abnormal, specimen, specified

thorax (bronchial washings) (pleural fluid) — see Ab-

normal, specimen, respiratory organs

vaginal — see Abnormal, specimen, female genital

organs

form

teeth K00.2

uterus — see Anomaly, uterus



	Malignant Primary	Malignant Secondary	Ca in situ	Benign	Uncertain Behavior	Unspecified Behavior		Malignant Primary	Malignant Secondary	Ca in situ	Benign	Uncertain Behavior	Unspecified Behavior
<b>Neoplasm, neoplastic</b>							<b>Neoplasm, neoplastic</b>						
— <i>continued</i>							— <i>continued</i>						
brain — <i>continued</i>							bronchus — <i>continued</i>						
basal ganglia	C71.0	C79.31	—	D33.0	D43.0	D49.6	main	C34.0-✓	C78.0-✓	D02.2-✓	D14.3-✓	D38.1	D49.1
cerebellopontine angle	C71.6	C79.31	—	D33.1	D43.1	D49.6	middle lobe of lung	C34.2	C78.0-✓	D02.21	D14.31	D38.1	D49.1
cerebellum NOS	C71.6	C79.31	—	D33.1	D43.1	D49.6	overlapping lesion	C34.8-✓	—	—	—	—	—
cerebrum	C71.0	C79.31	—	D33.0	D43.0	D49.6	upper lobe of lung	C34.1-✓	C78.0-✓	D02.2-✓	D14.3-✓	D38.1	D49.1
choroid plexus	C71.7	C79.31	—	D33.1	D43.1	D49.6	brow	C44.309	C79.2	D04.39	D23.39	D48.5	D49.2
corpus callosum	C71.8	C79.31	—	D33.2	D43.2	D49.6	basal cell carcinoma specified type NEC	C44.319	—	—	—	—	—
corpus striatum	C71.0	C79.31	—	D33.0	D43.0	D49.6	squamous cell carcinoma	C44.329	—	—	—	—	—
cortex (cerebral)	C71.0	C79.31	—	D33.0	D43.0	D49.6	buccal (cavity)	C06.9	C79.89	D00.00	D10.39	D37.09	D49.0
frontal lobe	C71.1	C79.31	—	D33.0	D43.0	D49.6	commissure	C06.0	C79.89	D00.02	D10.39	D37.09	D49.0
globus pallidus	C71.0	C79.31	—	D33.0	D43.0	D49.6	groove (lower)	C06.1	C79.89	D00.02	D10.39	D37.09	D49.0
hippocampus	C71.2	C79.31	—	D33.0	D43.0	D49.6	(upper)	C06.0	C79.89	D00.02	D10.39	D37.09	D49.0
hypothalamus	C71.0	C79.31	—	D33.0	D43.0	D49.6	mucosa	C06.0	C79.89	D00.02	D10.39	D37.09	D49.0
internal capsule	C71.0	C79.31	—	D33.0	D43.0	D49.6	sulcus (lower)	C06.1	C79.89	D00.02	D10.39	D37.09	D49.0
medulla							(upper)	C06.1	C79.89	D00.02	D10.39	D37.09	D49.0
oblongata	C71.7	C79.31	—	D33.1	D43.1	D49.6	bulbourethral gland	C68.0	C79.19	D09.19	D30.4	D41.3	D49.59
meninges	C70.0	C79.32	—	D32.0	D42.0	D49.7	bursa — <i>see</i> Neoplasm, connective tissue						
midbrain	C71.7	C79.31	—	D33.1	D43.1	D49.6	buttock NEC	C76.3	C79.89	D04.5	D36.7	D48.7	D49.89
occipital lobe	C71.4	C79.31	—	D33.0	D43.0	D49.6	calif	C76.5-✓	C79.89	D04.7-✓	D36.7	D48.7	D49.89
overlapping lesion	C71.8	C79.31	—	—	—	—	calvarium	C41.0	C79.51	—	D16.4	D48.0	D49.2
parietal lobe	C71.3	C79.31	—	D33.0	D43.0	D49.6	calyx, renal canal	C65.1-✓	C79.0-✓	D09.19	D30.1-✓	D41.1-✓	D49.51-✓
peduncle	C71.7	C79.31	—	D33.1	D43.1	D49.6	anal	C21.1	C78.5	D01.3	D12.9	D37.8	D49.0
pons	C71.7	C79.31	—	D33.1	D43.1	D49.6	auditory (external) — <i>see also</i> Neoplasm, skin, ear	C44.20-✓	C79.2	D04.2-✓	D23.2-✓	D48.5	D49.2
stem	C71.7	C79.31	—	D33.1	D43.1	D49.6	auricular (external) — <i>see also</i> Neoplasm, skin, ear	C44.20-✓	C79.2	D04.2-✓	D23.2-✓	D48.5	D49.2
tapetum	C71.8	C79.31	—	D33.2	D43.2	D49.6	canaliculi, biliary (biliferi)	C44.20-✓	C79.2	D04.2-✓	D23.2-✓	D48.5	D49.2
temporal lobe	C71.2	C79.31	—	D33.0	D43.0	D49.6	(intrahepatic)	C22.1	C78.7	D01.5	D13.4	D37.6	D49.0
thalamus	C71.0	C79.31	—	D33.0	D43.0	D49.6	canthus (eye) (inner)	C44.10-✓	C79.2	D04.1-✓	D23.1-✓	D48.5	D49.2
uncus	C71.2	C79.31	—	D33.0	D43.0	D49.6	basal cell carcinoma	C44.11-✓	—	—	—	—	—
ventricle (floor)	C71.5	C79.31	—	D33.0	D43.0	D49.6	sebaceous cell carcinoma	C44.13-✓	—	—	—	—	—
fourth	C71.7	C79.31	—	D33.1	D43.1	D49.6	specified type NEC	C44.19-✓	—	—	—	—	—
branchial (left) (cyst) (vestiges)	C10.4	C79.89	D00.08	D10.5	D37.05	D49.0	squamous cell carcinoma	C44.12-✓	—	—	—	—	—
breast (connective tissue) (glandular tissue) (soft parts)	C50.9-✓	C79.81	D05.1-✓	D24.1-✓	D48.6-✓	D49.3	capillary — <i>see</i> Neoplasm, connective tissue	C18.0	C78.5	D01.0	D12.0	D37.4	D49.0
areola	C50.0-✓	C79.81	D05.1-✓	D24.1-✓	D48.6-✓	D49.3	caput coli	C18.0	C78.5	D01.0	D12.0	D37.4	D49.0
axillary tail	C50.6-✓	C79.81	D05.1-✓	D24.1-✓	D48.6-✓	D49.3	carcinoid — <i>see</i> Tumor, carcinoid	C16.0	C78.89	D00.2	D13.1	D37.1	D49.0
central portion	C50.1-✓	C79.81	D05.1-✓	D24.1-✓	D48.6-✓	D49.3	cardia (gastric)	C16.0	C78.89	D00.2	D13.1	D37.1	D49.0
inner	C50.8-✓	C79.81	D05.1-✓	D24.1-✓	D48.6-✓	D49.3	cardiac orifice (stomach)	C16.0	C78.89	D00.2	D13.1	D37.1	D49.0
lower	C50.8-✓	C79.81	D05.1-✓	D24.1-✓	D48.6-✓	D49.3	cardio-esophageal junction	C16.0	C78.89	D00.2	D13.1	D37.1	D49.0
lower-inner quadrant	C50.3-✓	C79.81	D05.1-✓	D24.1-✓	D48.6-✓	D49.3	cardio-esophagus carina (bronchus)	C34.0-✓	C78.0-✓	D02.2-✓	D14.3-✓	D38.1	D49.1
lower-outer quadrant	C50.5-✓	C79.81	D05.1-✓	D24.1-✓	D48.6-✓	D49.3	carotid (artery)	C49.0	C79.89	—	D21.0	D48.1	D49.2
mastectomy site (skin) — <i>see also</i> Neoplasm, breast, skin	C44.501	C79.2	—	—	—	—	body	C75.4	C79.89	—	D35.5	D44.6	D49.7
specified as breast tissue	C50.8-✓	C79.81	—	—	—	—	carpus (any bone)	C40.1-✓	C79.51	—	D16.1-✓	—	—
midline	C50.8-✓	C79.81	D05.1-✓	D24.1-✓	D48.6-✓	D49.3	cartilage (articular) (joint) NEC — <i>see also</i> Neoplasm, bone	C41.9	C79.51	—	D16.9	D48.0	D49.2
nipple	C50.0-✓	C79.81	D05.1-✓	D24.1-✓	D48.6-✓	D49.3	arytenoid	C32.3	C78.39	D02.0	D14.1	D38.0	D49.1
outer	C50.8-✓	C79.81	D05.1-✓	D24.1-✓	D48.6-✓	D49.3	auricular	C49.0	C79.89	—	D21.0	D48.1	D49.2
overlapping lesion	C50.8-✓	—	—	—	—	—	bronchi	C34.0-✓	C78.39	—	D14.3-✓	D38.1	D49.1
skin	C44.501	C79.2	D04.5	D23.5	D48.5	D49.2	costal	C41.3	C79.51	—	D16.7	D48.0	D49.2
basal cell carcinoma	C44.511	—	—	—	—	—	cricoid	C32.3	C78.39	D02.0	D14.1	D38.0	D49.1
specified type NEC	C44.591	—	—	—	—	—	cuneiform	C32.3	C78.39	D02.0	D14.1	D38.0	D49.1
squamous cell carcinoma	C44.521	—	—	—	—	—	ear (external)	C49.0	C79.89	—	D21.0	D48.1	D49.2
tail (axillary)	C50.6-✓	C79.81	D05.1-✓	D24.1-✓	D48.6-✓	D49.3	ensiform	C41.3	C79.51	—	D16.7	D48.0	D49.2
upper	C50.8-✓	C79.81	D05.1-✓	D24.1-✓	D48.6-✓	D49.3	epiglottis	C32.1	C78.39	D02.0	D14.1	D38.0	D49.1
upper-inner quadrant	C50.2-✓	C79.81	D05.1-✓	D24.1-✓	D48.6-✓	D49.3							
upper-outer quadrant	C50.4-✓	C79.81	D05.1-✓	D24.1-✓	D48.6-✓	D49.3							
broad ligament	C57.1-✓	C79.82	D07.39	D28.2	D39.8	D49.59							
bronchiogenic, bronchogenic (lung)	C34.9-✓	C78.0-✓	D02.2-✓	D14.3-✓	D38.1	D49.1							
bronchiole	C34.9-✓	C78.0-✓	D02.2-✓	D14.3-✓	D38.1	D49.1							
bronchus	C34.9-✓	C78.0-✓	D02.2-✓	D14.3-✓	D38.1	D49.1							
carina	C34.0-✓	C78.0-✓	D02.2-✓	D14.3-✓	D38.1	D49.1							
lower lobe of lung	C34.3-✓	C78.0-✓	D02.2-✓	D14.3-✓	D38.1	D49.1							

Substance	Poisoning, Accidental (unintentional)	Poisoning, Intentional Self-harm	Poisoning, Assault	Poisoning, Undetermined	Adverse Effect	Under-dosing	Substance	Poisoning, Accidental (unintentional)	Poisoning, Intentional Self-harm	Poisoning, Assault	Poisoning, Undetermined	Adverse Effect	Under-dosing
<b>Androstalolone</b>	T38.7X1	T38.7X2	T38.7X3	T38.7X4	T38.7X5	T38.7X6	<b>Anthiolimine</b>	T37.4X1	T37.4X2	T37.4X3	T37.4X4	T37.4X5	T37.4X6
<b>Androstanolone</b>	T38.7X1	T38.7X2	T38.7X3	T38.7X4	T38.7X5	T38.7X6	<b>Anthrakinone</b>	T49.4X1	T49.4X2	T49.4X3	T49.4X4	T49.4X5	T49.4X6
<b>Androstereone</b>	T38.7X1	T38.7X2	T38.7X3	T38.7X4	T38.7X5	T38.7X6	<b>Anthracycline</b>	T45.1X1	T45.1X2	T45.1X3	T45.1X4	T45.1X5	T45.1X6
<b>Anemone pulsatilla</b>	T62.2X1	T62.2X2	T62.2X3	T62.2X4	—	—	<b>Antiadrenergic NEC</b>	T44.8X1	T44.8X2	T44.8X3	T44.8X4	T44.8X5	T44.8X6
<b>Anesthesia</b>							<b>Antiallergic NEC</b>	T45.0X1	T45.0X2	T45.0X3	T45.0X4	T45.0X5	T45.0X6
caudal	T41.3X1	T41.3X2	T41.3X3	T41.3X4	T41.3X5	T41.3X6	<b>Antiandrogen NEC</b>	T38.6X1	T38.6X2	T38.6X3	T38.6X4	T38.6X5	T38.6X6
endotracheal	T41.0X1	T41.0X2	T41.0X3	T41.0X4	T41.0X5	T41.0X6	<b>Anti-anemic (drug) (preparation)</b>	T45.8X1	T45.8X2	T45.8X3	T45.8X4	T45.8X5	T45.8X6
epidural	T41.3X1	T41.3X2	T41.3X3	T41.3X4	T41.3X5	T41.3X6	<b>Antianxiety drug NEC</b>	T43.501	T43.502	T43.503	T43.504	T43.505	T43.506
inhalation	T41.0X1	T41.0X2	T41.0X3	T41.0X4	T41.0X5	T41.0X6	<b>Antiaris toxicaria</b>	T65.891	T65.892	T65.893	T65.894	—	—
local	T41.3X1	T41.3X2	T41.3X3	T41.3X4	T41.3X5	T41.3X6	<b>Antiarteriosclerotic drug</b>	T46.6X1	T46.6X2	T46.6X3	T46.6X4	T46.6X5	T46.6X6
mucosal	T41.3X1	T41.3X2	T41.3X3	T41.3X4	T41.3X5	T41.3X6	<b>Antiasthmatic drug NEC</b>	T48.6X1	T48.6X2	T48.6X3	T48.6X4	T48.6X5	T48.6X6
muscle relaxation	T48.1X1	T48.1X2	T48.1X3	T48.1X4	T48.1X5	T48.1X6	<b>Antibiotic Otic Suspension (Solution)*</b>	T49.6X1	T49.6X2	T49.6X3	T49.6X4	T49.6X5	T49.6X6
nerve blocking	T41.3X1	T41.3X2	T41.3X3	T41.3X4	T41.3X5	T41.3X6	<b>Antibiotic</b>	T36.91	T36.92	T36.93	T36.94	T36.95	T36.96
plexus blocking	T41.3X1	T41.3X2	T41.3X3	T41.3X4	T41.3X5	T41.3X6	aminoglycoside	T36.5X1	T36.5X2	T36.5X3	T36.5X4	T36.5X5	T36.5X6
potentiated	T41.201	T41.202	T41.203	T41.204	T41.205	T41.206	anticancer	T45.1X1	T45.1X2	T45.1X3	T45.1X4	T45.1X5	T45.1X6
rectal	T41.201	T41.202	T41.203	T41.204	T41.205	T41.206	antifungal	T36.7X1	T36.7X2	T36.7X3	T36.7X4	T36.7X5	T36.7X6
general	T41.201	T41.202	T41.203	T41.204	T41.205	T41.206	antimycobacterial	T36.5X1	T36.5X2	T36.5X3	T36.5X4	T36.5X5	T36.5X6
local	T41.3X1	T41.3X2	T41.3X3	T41.3X4	T41.3X5	T41.3X6	antineoplastic	T45.1X1	T45.1X2	T45.1X3	T45.1X4	T45.1X5	T45.1X6
regional	T41.3X1	T41.3X2	T41.3X3	T41.3X4	T41.3X5	T41.3X6	b-lactam NEC	T36.1X1	T36.1X2	T36.1X3	T36.1X4	T36.1X5	T36.1X6
surface	T41.3X1	T41.3X2	T41.3X3	T41.3X4	T41.3X5	T41.3X6	cephalosporin (group)	T36.1X1	T36.1X2	T36.1X3	T36.1X4	T36.1X5	T36.1X6
<b>Anesthetic NEC — see also Anesthesia</b>	T41.41	T41.42	T41.43	T41.44	T41.45	T41.46	chloramphenicol (group)	T36.2X1	T36.2X2	T36.2X3	T36.2X4	T36.2X5	T36.2X6
with muscle relaxant							ENT	T49.6X1	T49.6X2	T49.6X3	T49.6X4	T49.6X5	T49.6X6
general	T41.201	T41.202	T41.203	T41.204	T41.205	T41.206	eye	T49.5X1	T49.5X2	T49.5X3	T49.5X4	T49.5X5	T49.5X6
local	T41.3X1	T41.3X2	T41.3X3	T41.3X4	T41.3X5	T41.3X6	fungicidal (local)	T49.0X1	T49.0X2	T49.0X3	T49.0X4	T49.0X5	T49.0X6
gaseous NEC	T41.0X1	T41.0X2	T41.0X3	T41.0X4	T41.0X5	T41.0X6	intestinal	T36.8X1	T36.8X2	T36.8X3	T36.8X4	T36.8X5	T36.8X6
general NEC	T41.201	T41.202	T41.203	T41.204	T41.205	T41.206	local	T49.0X1	T49.0X2	T49.0X3	T49.0X4	T49.0X5	T49.0X6
halogenated hydrocarbon derivatives NEC	T41.0X1	T41.0X2	T41.0X3	T41.0X4	T41.0X5	T41.0X6	macrolides	T36.3X1	T36.3X2	T36.3X3	T36.3X4	T36.3X5	T36.3X6
infiltration NEC	T41.3X1	T41.3X2	T41.3X3	T41.3X4	T41.3X5	T41.3X6	polypeptide specified NEC	T36.8X1	T36.8X2	T36.8X3	T36.8X4	T36.8X5	T36.8X6
intravenous NEC	T41.1X1	T41.1X2	T41.1X3	T41.1X4	T41.1X5	T41.1X6	tetracycline (group)	T36.8X1	T36.8X2	T36.8X3	T36.8X4	T36.8X5	T36.8X6
local NEC	T41.3X1	T41.3X2	T41.3X3	T41.3X4	T41.3X5	T41.3X6	throat	T49.6X1	T49.6X2	T49.6X3	T49.6X4	T49.6X5	T49.6X6
rectal	T41.201	T41.202	T41.203	T41.204	T41.205	T41.206	<b>Anticancer agents NEC</b>	T45.1X1	T45.1X2	T45.1X3	T45.1X4	T45.1X5	T45.1X6
general	T41.201	T41.202	T41.203	T41.204	T41.205	T41.206	<b>Anticholesterolemic drug NEC</b>	T46.6X1	T46.6X2	T46.6X3	T46.6X4	T46.6X5	T46.6X6
local	T41.3X1	T41.3X2	T41.3X3	T41.3X4	T41.3X5	T41.3X6	<b>Anticholinergic NEC</b>	T44.3X1	T44.3X2	T44.3X3	T44.3X4	T44.3X5	T44.3X6
regional NEC	T41.3X1	T41.3X2	T41.3X3	T41.3X4	T41.3X5	T41.3X6	<b>Anticholinesterase</b>	T44.0X1	T44.0X2	T44.0X3	T44.0X4	T44.0X5	T44.0X6
spinal NEC	T41.3X1	T41.3X2	T41.3X3	T41.3X4	T41.3X5	T41.3X6	organophosphorus insecticide	T44.0X1	T44.0X2	T44.0X3	T44.0X4	T44.0X5	T44.0X6
thiobarbiturate	T41.1X1	T41.1X2	T41.1X3	T41.1X4	T41.1X5	T41.1X6	nerve gas	T60.0X1	T60.0X2	T60.0X3	—	—	—
topical	T41.3X1	T41.3X2	T41.3X3	T41.3X4	T41.3X5	T41.3X6	reversible	T44.0X1	T44.0X2	T44.0X3	T44.0X4	T44.0X5	T44.0X6
<b>Aneurine</b>	T45.2X1	T45.2X2	T45.2X3	T45.2X4	T45.2X5	T45.2X6	ophthalmological	T49.5X1	T49.5X2	T49.5X3	T49.5X4	T49.5X5	T49.5X6
<b>Angeliq*</b>	T38.5X1	T38.5X2	T38.5X3	T38.5X4	T38.5X5	T38.5X6	<b>Anticoagulant NEC</b>	T45.511	T45.512	T45.513	T45.514	T45.515	T45.516
<b>Angio-Conray</b>	T50.8X1	T50.8X2	T50.8X3	T50.8X4	T50.8X5	T50.8X6	Antagonist	T45.7X1	T45.7X2	T45.7X3	T45.7X4	T45.7X5	T45.7X6
<b>Angiotensin</b>	T44.5X1	T44.5X2	T44.5X3	T44.5X4	T44.5X5	T44.5X6	<b>Anti-common-cold drug NEC</b>	T48.5X1	T48.5X2	T48.5X3	T48.5X4	T48.5X5	T48.5X6
<b>Angiotensinamide</b>	T44.991	T44.992	T44.993	T44.994	T44.995	T44.996	<b>Anticonvulsant</b>	T42.71	T42.72	T42.73	T42.74	T42.75	T42.76
<b>Anhydrohydroxy-progesterone</b>	T38.5X1	T38.5X2	T38.5X3	T38.5X4	T38.5X5	T38.5X6	barbiturate	T42.3X1	T42.3X2	T42.3X3	T42.3X4	T42.3X5	T42.3X6
<b>Anhydron</b>	T50.2X1	T50.2X2	T50.2X3	T50.2X4	T50.2X5	T50.2X6	combination (with barbiturate)	T42.3X1	T42.3X2	T42.3X3	T42.3X4	T42.3X5	T42.3X6
<b>Anileridine</b>	T40.491	T40.492	T40.493	T40.494	T40.495	T40.496	hydantoin	T42.0X1	T42.0X2	T42.0X3	T42.0X4	T42.0X5	T42.0X6
<b>Aniline (dye) (liquid) analgesic derivatives, therapeutic NEC</b>	T65.3X1	T65.3X2	T65.3X3	T65.3X4	—	—	hypnotic NEC	T42.6X1	T42.6X2	T42.6X3	T42.6X4	T42.6X5	T42.6X6
vapor	T65.3X1	T65.3X2	T65.3X3	T65.3X4	—	—	oxazolindione	T42.2X1	T42.2X2	T42.2X3	T42.2X4	T42.2X5	T42.2X6
<b>Anisocorpine</b>	T44.3X1	T44.3X2	T44.3X3	T44.3X4	T44.3X5	T44.3X6	pyrimidinedione	T42.6X1	T42.6X2	T42.6X3	T42.6X4	T42.6X5	T42.6X6
<b>Anise oil</b>	T47.5X1	T47.5X2	T47.5X3	T47.5X4	T47.5X5	T47.5X6	specified NEC	T42.6X1	T42.6X2	T42.6X3	T42.6X4	T42.6X5	T42.6X6
<b>Anisidine</b>	T65.3X1	T65.3X2	T65.3X3	T65.3X4	—	—	succinimide	T42.2X1	T42.2X2	T42.2X3	T42.2X4	T42.2X5	T42.2X6
<b>Anisindione</b>	T45.511	T45.512	T45.513	T45.514	T45.515	T45.516	<b>Antidepressant</b>	T43.201	T43.202	T43.203	T43.204	T43.205	T43.206
<b>Anisotropine methyl-bromide</b>	T44.3X1	T44.3X2	T44.3X3	T44.3X4	T44.3X5	T44.3X6	monoamine oxidase inhibitor	T43.1X1	T43.1X2	T43.1X3	T43.1X4	T43.1X5	T43.1X6
<b>Anistreplase</b>	T45.611	T45.612	T45.613	T45.614	T45.615	T45.616	selective serotonin norepinephrine reuptake inhibitor	T43.211	T43.212	T43.213	T43.214	T43.215	T43.216
<b>Anorexiant (central)</b>	T50.5X1	T50.5X2	T50.5X3	T50.5X4	T50.5X5	T50.5X6	selective serotonin reuptake inhibitor	T43.221	T43.222	T43.223	T43.224	T43.225	T43.226
<b>Anorexic agents</b>	T50.5X1	T50.5X2	T50.5X3	T50.5X4	T50.5X5	T50.5X6	specified NEC	T43.291	T43.292	T43.293	T43.294	T43.295	T43.296
<b>Ansaid*</b>	T39.311	T39.312	T39.313	T39.314	T39.315	T39.316	tetracycline	T43.021	T43.022	T43.023	T43.024	T43.025	T43.026
<b>Ansamycin</b>	T36.6X1	T36.6X2	T36.6X3	T36.6X4	T36.6X5	T36.6X6	triazolopyridine	T43.211	T43.212	T43.213	T43.214	T43.215	T43.216
<b>Ant (bite) (sting)</b>	T63.421	T63.422	T63.423	T63.424	—	—	tricyclic	T43.011	T43.012	T43.013	T43.014	T43.015	T43.016
<b>Antabuse</b>	T50.6X1	T50.6X2	T50.6X3	T50.6X4	T50.6X5	T50.6X6	<b>Antidiabetic NEC</b>	T38.3X1	T38.3X2	T38.3X3	T38.3X4	T38.3X5	T38.3X6
<b>Antacid NEC</b>	T47.1X1	T47.1X2	T47.1X3	T47.1X4	T47.1X5	T47.1X6	biguanide	T38.3X1	T38.3X2	T38.3X3	T38.3X4	T38.3X5	T38.3X6
<b>Antagonist</b>							and sulfonyl combined	T38.3X1	T38.3X2	T38.3X3	T38.3X4	T38.3X5	T38.3X6
Aldosterone	T50.0X1	T50.0X2	T50.0X3	T50.0X4	T50.0X5	T50.0X6	combined	T38.3X1	T38.3X2	T38.3X3	T38.3X4	T38.3X5	T38.3X6
alpha-adrenoreceptor	T44.6X1	T44.6X2	T44.6X3	T44.6X4	T44.6X5	T44.6X6	sulfonylurea	T38.3X1	T38.3X2	T38.3X3	T38.3X4	T38.3X5	T38.3X6
anticoagulant	T45.7X1	T45.7X2	T45.7X3	T45.7X4	T45.7X5	T45.7X6	<b>Antidiarrheal drug NEC</b>	T47.6X1	T47.6X2	T47.6X3	T47.6X4	T47.6X5	T47.6X6
beta-adrenoreceptor	T44.7X1	T44.7X2	T44.7X3	T44.7X4	T44.7X5	T44.7X6	absorbent	T47.6X1	T47.6X2	T47.6X3	T47.6X4	T47.6X5	T47.6X6
extrapyramidal NEC	T44.3X1	T44.3X2	T44.3X3	T44.3X4	T44.3X5	T44.3X6	<b>Anti-D immunoglobulin (human)</b>	T50.211	T50.212	T50.213	T50.214	T50.215	T50.216
folic acid	T45.1X1	T45.1X2	T45.1X3	T45.1X4	T45.1X5	T45.1X6	<b>Antidiphtheria serum</b>	T50.211	T50.212	T50.213	T50.214	T50.215	T50.216
H2 receptor	T47.0X1	T47.0X2	T47.0X3	T47.0X4	T47.0X5	T47.0X6	<b>Antidiuretic hormone</b>	T38.891	T38.892	T38.893	T38.894	T38.895	T38.896
heavy metal	T45.8X1	T45.8X2	T45.8X3	T45.8X4	T45.8X5	T45.8X6	<b>Antidote NEC</b>	T50.6X1	T50.6X2	T50.6X3	T50.6X4	T50.6X5	T50.6X6
narcotic analgesic	T50.7X1	T50.7X2	T50.7X3	T50.7X4	T50.7X5	T50.7X6	heavy metal	T45.8X1	T45.8X2	T45.8X3	T45.8X4	T45.8X5	T45.8X6
opiate	T50.7X1	T50.7X2	T50.7X3	T50.7X4	T50.7X5	T50.7X6	<b>Antidysrhythmic NEC</b>	T46.2X1	T46.2X2</				

# ICD-10-CM Tabular List of Diseases and Injuries

## Chapter 1. Certain Infectious and Parasitic Diseases (A00–B99), U07.1, U09.9

### Chapter-specific Guidelines with Coding Examples

The chapter-specific guidelines from the ICD-10-CM Official Guidelines for Coding and Reporting have been provided below. Along with these guidelines are coding examples, contained in the shaded boxes, that have been developed to help illustrate the coding and/or sequencing guidance found in these guidelines.

#### a. Human immunodeficiency virus (HIV) infections

##### 1) Code only confirmed cases

Code only confirmed cases of HIV infection/illness. This is an exception to the hospital inpatient guideline Section II, H.

In this context, “confirmation” does not require documentation of positive serology or culture for HIV; the provider’s diagnostic statement that the patient is HIV positive or has an HIV-related illness is sufficient.

Patient being seen for hypothyroidism with possible HIV infection

##### **E03.9 Hypothyroidism, unspecified**

*Explanation:* Only the hypothyroidism is coded in this scenario because it has not been confirmed that an HIV infection is present.

##### 2) Selection and sequencing of HIV codes

###### (a) Patient admitted for HIV-related condition

If a patient is admitted for an HIV-related condition, the principal diagnosis should be B20, Human immunodeficiency virus [HIV] disease followed by additional diagnosis codes for all reported HIV-related conditions.

An exception to this guideline is if the reason for admission is hemolytic-uremic syndrome associated with HIV disease. Assign code D59.31, Infection-associated hemolytic-uremic syndrome, followed by code B20, Human immunodeficiency virus [HIV] disease.

HIV with CMV

##### **B20 Human immunodeficiency virus [HIV] disease**

##### **B25.9 Cytomegaloviral disease, unspecified**

*Explanation:* Cytomegaloviral infection is an HIV related condition, so the HIV diagnosis code is reported first, followed by the code for the CMV.

###### (b) Patient with HIV disease admitted for unrelated condition

If a patient with HIV disease is admitted for an unrelated condition (such as a traumatic injury), the code for the unrelated condition (e.g., the nature of injury code) should be the principal diagnosis. Other diagnoses would be B20 followed by additional diagnosis codes for all reported HIV-related conditions.

Sprain of the internal collateral ligament, right ankle; HIV

##### **S93.491A Sprain of other ligament of right ankle, initial encounter**

##### **B20 Human immunodeficiency virus [HIV] disease**

*Explanation:* The ankle sprain is not related to HIV, so it is the first-listed diagnosis code, and HIV is reported secondarily.

###### (c) Whether the patient is newly diagnosed

Whether the patient is newly diagnosed or has had previous admissions/encounters for HIV conditions is irrelevant to the sequencing decision.

Newly diagnosed multiple cutaneous Kaposi’s sarcoma lesions in previously diagnosed HIV disease

##### **B20 Human immunodeficiency virus [HIV] disease**

##### **C46.0 Kaposi’s sarcoma of skin**

*Explanation:* Even though the HIV was diagnosed on a previous encounter, it is still sequenced first when coded with an HIV-related condition. Kaposi’s sarcoma is an HIV-related condition.

###### (d) Asymptomatic human immunodeficiency virus

Z21, Asymptomatic human immunodeficiency virus [HIV] infection status, is to be applied when the patient without any documentation of symptoms is listed as being “HIV positive,” “known HIV,” “HIV test positive,” or similar terminology. Do not use this code if the term “AIDS” or “HIV disease” is used or if the patient is treated for any

HIV-related illness or is described as having any condition(s) resulting from his/her HIV positive status; use B20 in these cases.

###### (e) Patients with inconclusive HIV serology

Patients with inconclusive HIV serology, but no definitive diagnosis or manifestations of the illness, may be assigned code R75, Inconclusive laboratory evidence of human immunodeficiency virus [HIV].

###### (f) Previously diagnosed HIV-related illness

Patients with any known prior diagnosis of an HIV-related illness should be coded to B20. Once a patient has developed an HIV-related illness, the patient should always be assigned code B20 on every subsequent admission/encounter. Patients previously diagnosed with any HIV illness (B20) should never be assigned to R75 or Z21, Asymptomatic human immunodeficiency virus [HIV] infection status.

###### (g) HIV infection in pregnancy, childbirth and the puerperium

During pregnancy, childbirth or the puerperium, a patient admitted (or presenting for a health care encounter) because of an HIV-related illness should receive a principal diagnosis code of O98.7-, Human immunodeficiency [HIV] disease complicating pregnancy, childbirth and the puerperium, followed by B20 and the code(s) for the HIV-related illness(es). Codes from Chapter 15 always take sequencing priority.

Patients with asymptomatic HIV infection status admitted (or presenting for a health care encounter) during pregnancy, childbirth, or the puerperium should receive codes of O98.7- and Z21.

###### (h) Encounters for testing for HIV

If a patient is being seen to determine his/her HIV status, use code Z11.4, Encounter for screening for human immunodeficiency virus [HIV]. Use additional codes for any associated high-risk behavior, if applicable.

If a patient with signs or symptoms is being seen for HIV testing, code the signs and symptoms. An additional counseling code Z71.7, Human immunodeficiency virus [HIV] counseling, may be used if counseling is provided during the encounter for the test.

When a patient returns to be informed of his/her HIV test results and the test result is negative, use code Z71.7, Human immunodeficiency virus [HIV] counseling.

If the results are positive, see previous guidelines and assign codes as appropriate.

###### (i) HIV managed by antiretroviral medication

If a patient with documented HIV disease, HIV-related illness or AIDS is currently managed on antiretroviral medications, assign code B20, Human immunodeficiency virus [HIV] disease. Code Z79.899, Other long term (current) drug therapy, may be assigned as an additional code to identify the long-term (current) use of antiretroviral medications.

###### (j) Encounter for HIV Prophylaxis Measure

When a patient is seen for administration of pre-exposure prophylaxis medication for HIV, assign code Z29.81, Encounter for HIV pre-exposure prophylaxis. Pre-exposure prophylaxis (PrEP) is intended to prevent infection in people who are at risk for getting HIV through sex or injection drug use. Any risk factors for HIV should also be coded.

#### b. Infectious agents as the cause of diseases classified to other chapters

Certain infections are classified in chapters other than Chapter 1 and no organism is identified as part of the infection code. In these instances, it is necessary to use an additional code from Chapter 1 to identify the organism. A code from category B95, Streptococcus, Staphylococcus, and Enterococcus as the cause of diseases classified to other chapters, B96, Other bacterial agents as the cause of diseases classified to other chapters, or B97, Viral agents as the cause of diseases classified to other chapters, is to be used as an additional code to identify the organism. An instructional note will be found at the infection code advising that an additional organism code is required.

Acute *E. coli* cystitis

##### **N30.00 Acute cystitis without hematuria**

##### **B96.20 Unspecified Escherichia coli [E.coli] as the cause of diseases classified elsewhere**

*Explanation:* An instructional note under the category for the cystitis indicates to code also the specific organism.



**F16.921** Hallucinogen use, unspecified with intoxication with delirium HCC ESR COM  
Other hallucinogen intoxication delirium

**F16.929** Hallucinogen use, unspecified with intoxication, unspecified HCC ESR COM

**F16.94** Hallucinogen use, unspecified with hallucinogen-induced mood disorder HCC ESR COM  
Other hallucinogen induced bipolar or related disorder, without use disorder  
Other hallucinogen induced depressive disorder, without use disorder  
Phencyclidine induced bipolar or related disorder, without use disorder  
Phencyclidine induced depressive disorder, without use disorder

√ 6th **F16.95** Hallucinogen use, unspecified with hallucinogen-induced psychotic disorder

**F16.950** Hallucinogen use, unspecified with hallucinogen-induced psychotic disorder with delusions HCC ESR COM

**F16.951** Hallucinogen use, unspecified with hallucinogen-induced psychotic disorder with hallucinations HCC ESR COM

**F16.959** Hallucinogen use, unspecified with hallucinogen-induced psychotic disorder, unspecified HCC ESR COM  
Other hallucinogen induced psychotic disorder, without use disorder  
Phencyclidine induced psychotic disorder, without use disorder

√ 6th **F16.98** Hallucinogen use, unspecified with other specified hallucinogen-induced disorder

**F16.980** Hallucinogen use, unspecified with hallucinogen-induced anxiety disorder HCC ESR COM  
Other hallucinogen-induced anxiety disorder, without use disorder  
Phencyclidine induced anxiety disorder, without use disorder

**F16.983** Hallucinogen use, unspecified with hallucinogen persisting perception disorder (flashbacks) HCC ESR COM

**F16.988** Hallucinogen use, unspecified with other hallucinogen-induced disorder HCC ESR COM

**F16.99** Hallucinogen use, unspecified with unspecified hallucinogen-induced disorder HCC ESR COM

√ 4th **F17 Nicotine dependence**

**EXCLUDES 1** history of tobacco dependence (Z87.891)  
tobacco use NOS (Z72.0)

**EXCLUDES 2** tobacco use (smoking) during pregnancy, childbirth and the puerperium (O99.33-)  
toxic effect of nicotine (T65.2-)

AHA: 2013,4Q,108-109

√ 5th **F17.2 Nicotine dependence**

√ 6th **F17.20** Nicotine dependence, unspecified

**F17.200** Nicotine dependence, unspecified, uncomplicated

Tobacco use disorder, mild  
Tobacco use disorder, moderate  
Tobacco use disorder, severe

AHA: 2016,1Q,36

**TIP:** Assign when provider documentation indicates "smoker" without further specification.

**F17.201** Nicotine dependence, unspecified, in remission

Tobacco use disorder, mild, in early remission  
Tobacco use disorder, mild, in sustained remission  
Tobacco use disorder, moderate, in early remission  
Tobacco use disorder, moderate, in sustained remission  
Tobacco use disorder, severe, in early remission  
Tobacco use disorder, severe, in sustained remission

**F17.203** Nicotine dependence unspecified, with withdrawal

Tobacco withdrawal

**F17.208** Nicotine dependence, unspecified, with other nicotine-induced disorders

**F17.209** Nicotine dependence, unspecified, with unspecified nicotine-induced disorders

√ 6th **F17.21** Nicotine dependence, cigarettes

**F17.210** Nicotine dependence, cigarettes, uncomplicated  
AHA: 2017,2Q,28-29

**F17.211** Nicotine dependence, cigarettes, in remission

Tobacco use disorder, cigarettes, mild, in early remission

Tobacco use disorder, cigarettes, mild, in sustained remission

Tobacco use disorder, cigarettes, moderate, in early remission

Tobacco use disorder, cigarettes, moderate, in sustained remission

Tobacco use disorder, cigarettes, severe, in early remission

Tobacco use disorder, cigarettes, severe, in sustained remission

**F17.213** Nicotine dependence, cigarettes, with withdrawal

**F17.218** Nicotine dependence, cigarettes, with other nicotine-induced disorders

**F17.219** Nicotine dependence, cigarettes, with unspecified nicotine-induced disorders

√ 6th **F17.22** Nicotine dependence, chewing tobacco

**F17.220** Nicotine dependence, chewing tobacco, uncomplicated

**F17.221** Nicotine dependence, chewing tobacco, in remission

Tobacco use disorder, chewing tobacco, mild, in early remission

Tobacco use disorder, chewing tobacco, mild, in sustained remission

Tobacco use disorder, chewing tobacco, moderate, in early remission

Tobacco use disorder, chewing tobacco, moderate, in sustained remission

Tobacco use disorder, chewing tobacco, severe, in early remission

Tobacco use disorder, chewing tobacco, severe, in sustained remission

**F17.223** Nicotine dependence, chewing tobacco, with withdrawal

**F17.228** Nicotine dependence, chewing tobacco, with other nicotine-induced disorders

**F17.229** Nicotine dependence, chewing tobacco, with unspecified nicotine-induced disorders

√ 6th **F17.29** Nicotine dependence, other tobacco product

**F17.290** Nicotine dependence, other tobacco product, uncomplicated

AHA: 2017,2Q,28-29

**F17.291** Nicotine dependence, other tobacco product, in remission

Tobacco use disorder, other tobacco product, mild, in early remission

Tobacco use disorder, other tobacco product, mild, in sustained remission

Tobacco use disorder, other tobacco product, moderate, in early remission

Tobacco use disorder, other tobacco product, moderate, in sustained remission

Tobacco use disorder, other tobacco product, severe, in early remission

Tobacco use disorder, other tobacco product, severe, in sustained remission

**F17.293** Nicotine dependence, other tobacco product, with withdrawal

**F17.298** Nicotine dependence, other tobacco product, with other nicotine-induced disorders

**F17.299** Nicotine dependence, other tobacco product, with unspecified nicotine-induced disorders

**I22.8 Subsequent ST elevation (STEMI) myocardial infarction of other sites** HCC Rx ESR COM

- Subsequent acute transmural myocardial infarction of other sites
- Subsequent apical-lateral transmural (Q wave) myocardial infarction (acute)
- Subsequent basal-lateral transmural (Q wave) myocardial infarction (acute)
- Subsequent high lateral transmural (Q wave) myocardial infarction (acute)
- Subsequent posterior (true) transmural (Q wave) myocardial infarction (acute)
- Subsequent posterobasal transmural (Q wave) myocardial infarction (acute)
- Subsequent posterolateral transmural (Q wave) myocardial infarction (acute)
- Subsequent posteroseptal transmural (Q wave) myocardial infarction (acute)
- Subsequent septal NOS transmural (Q wave) myocardial infarction (acute)
- Subsequent transmural (Q wave) myocardial infarction (acute)(of lateral (wall) NOS

**I22.9 Subsequent ST elevation (STEMI) myocardial infarction of unspecified site** HCC Rx ESR COM

- Subsequent acute myocardial infarction of unspecified site
- Subsequent myocardial infarction (acute) NOS

**I23 Certain current complications following ST elevation (STEMI) and non-ST elevation (NSTEMI) myocardial infarction (within the 28 day period)**

AHA: 2017,2Q,11

DEF: ST elevation myocardial infarction: Complete obstruction of one or more coronary arteries causing decreased blood flow (ischemia) and necrosis of myocardial muscle cells.

DEF: Non-ST elevation myocardial infarction: Partial obstruction of one or more coronary arteries that causes decreased blood flow (ischemia) and may cause partial thickness necrosis of myocardial muscle cells.

**I23.0 Hemopericardium as current complication following acute myocardial infarction** HCC Rx ESR COM A

**EXCLUDES 1** hemopericardium not specified as current complication following acute myocardial infarction (I31.2)

**I23.1 Atrial septal defect as current complication following acute myocardial infarction** HCC Rx ESR COM A

**EXCLUDES 1** acquired atrial septal defect not specified as current complication following acute myocardial infarction (I51.0)

**I23.2 Ventricular septal defect as current complication following acute myocardial infarction** HCC Rx ESR COM A

**EXCLUDES 1** acquired ventricular septal defect not specified as current complication following acute myocardial infarction (I51.0)

**I23.3 Rupture of cardiac wall without hemopericardium as current complication following acute myocardial infarction** HCC Rx ESR COM A

**I23.4 Rupture of chordae tendineae as current complication following acute myocardial infarction** HCC Rx ESR COM

**EXCLUDES 1** rupture of chordae tendineae not specified as current complication following acute myocardial infarction (I51.1)

**I23.5 Rupture of papillary muscle as current complication following acute myocardial infarction** HCC Rx ESR COM

**EXCLUDES 1** rupture of papillary muscle not specified as current complication following acute myocardial infarction (I51.2)

**I23.6 Thrombosis of atrium, auricular appendage, and ventricle as current complications following acute myocardial infarction** HCC Rx ESR COM A

**EXCLUDES 1** thrombosis of atrium, auricular appendage, and ventricle not specified as current complication following acute myocardial infarction (I51.3)

**I23.7 Postinfarction angina** HCC Rx ESR COM A

AHA: 2015,2Q,16

TIP: When postinfarction angina occurs with atherosclerotic coronary artery disease, code both I23.7 and I25.118 for atherosclerotic disease with other forms of angina pectoris.

**I23.8 Other current complications following acute myocardial infarction** HCC Rx ESR COM A

**I24 Other acute ischemic heart diseases**

- EXCLUDES 1** angina pectoris (I20.-)
- transient myocardial ischemia in newborn (P29.4)
- EXCLUDES 2** non-ischemic myocardial injury (I5A)

**I24.0 Acute coronary thrombosis not resulting in myocardial infarction** HCC Rx ESR COM

- Acute coronary (artery) (vein) embolism not resulting in myocardial infarction
- Acute coronary (artery) (vein) occlusion not resulting in myocardial infarction
- Acute coronary (artery) (vein) thromboembolism not resulting in myocardial infarction
- EXCLUDES 1** atherosclerotic heart disease (I25.1-)

AHA: 2013,1Q,24

**I24.1 Dressler's syndrome** HCC Rx ESR COM

- Postmyocardial infarction syndrome
- EXCLUDES 1** postinfarction angina (I23.7)
- DEF: Fever, leukocytosis, chest pain, evidence of pericarditis, pleurisy, and pneumonia occurring days or weeks after a myocardial infarction.

**I24.8 Other forms of acute ischemic heart disease** HCC Rx ESR COM

- EXCLUDES 1** myocardial infarction due to demand ischemia (I21.A1)
- AHA: 2023,4Q,25-26; 2019,4Q,53; 2017,4Q,13

**I24.81 Acute coronary microvascular dysfunction** HCC Rx ESR COM

- Acute (presentation of) coronary microvascular disease

**I24.89 Other forms of acute ischemic heart disease** HCC Rx ESR COM

**I24.9 Acute ischemic heart disease, unspecified** HCC Rx ESR COM

**EXCLUDES 1** ischemic heart disease (chronic) NOS (I25.9)

**I25 Chronic ischemic heart disease**

- Use additional code to identify:
- chronic total occlusion of coronary artery (I25.82)
- exposure to environmental tobacco smoke (Z77.22)
- history of tobacco dependence (Z87.891)
- occupational exposure to environmental tobacco smoke (Z57.31)
- tobacco dependence (F17.-)
- tobacco use (Z72.0)

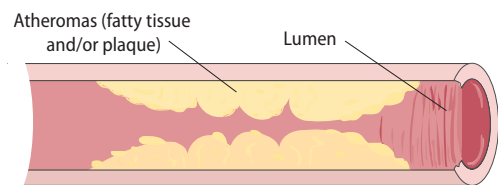
**EXCLUDES 2** non-ischemic myocardial injury (I5A)

AHA: 2022,4Q,20-21

**I25.1 Atherosclerotic heart disease of native coronary artery** HCC Rx ESR COM

- Atherosclerotic cardiovascular disease
- Coronary (artery) atheroma
- Coronary (artery) atherosclerosis
- Coronary (artery) disease
- Coronary (artery) sclerosis
- Use additional code, if applicable, to identify:
- coronary atherosclerosis due to calcified coronary lesion (I25.84)
- coronary atherosclerosis due to lipid rich plaque (I25.83)
- EXCLUDES 2** atheroembolism (I75.-)
- atherosclerosis of coronary artery bypass graft(s) and transplanted heart (I25.7-)

**Atheromas**



**I25.10 Atherosclerotic heart disease of native coronary artery without angina pectoris** Rx A

- Atherosclerotic heart disease NOS
- AHA: 2024,1Q,28; 2021,3Q,6-7; 2015,2Q,16; 2012,4Q,92

**I25.11 Atherosclerotic heart disease of native coronary artery with angina pectoris** HCC Rx ESR COM

AHA: 2024,1Q,28

**I25.110 Atherosclerotic heart disease of native coronary artery with unstable angina pectoris** HCC Rx ESR COM A

- EXCLUDES 1** unstable angina without atherosclerotic heart disease (I20.0)

## Muscle/Tendon Table

ICD-10-CM categorizes certain muscles and tendons in the upper and lower extremities by their action (e.g., extension, flexion), their anatomical location (e.g., posterior, anterior), and/or whether they are intrinsic or extrinsic to a certain anatomical area. The Muscle/Tendon Table is provided at the beginning of chapters 13 and 19 as a resource to help users when code selection depends on one or more of these characteristics. A **TIP** has been placed at those categories and/or subcategories that relate to this table. Please note that this table is not all-inclusive, and proper code assignment should be based on the provider's documentation.

Body Region	Muscle	Extensor Tendon	Flexor Tendon	Other Tendon
<b>Shoulder</b>				
	Deltoid	Posterior deltoid	Anterior deltoid	
	Rotator cuff			
	Infraspinatus			Infraspinatus
	Subscapularis			Subscapularis
	Supraspinatus			Supraspinatus
	Teres minor			Teres minor
	Teres major	Teres major		
<b>Upper arm</b>				
	Anterior muscles			
	Biceps brachii — long head		Biceps brachii — long head	
	Biceps brachii — short head		Biceps brachii — short head	
	Brachialis		Brachialis	
	Coracobrachialis		Coracobrachialis	
	Posterior muscles			
	Triceps brachii	Triceps brachii		
<b>Forearm</b>				
	Anterior muscles			
	Flexors			
	Deep			
	Flexor digitorum profundus		Flexor digitorum profundus	
	Flexor pollicis longus		Flexor pollicis longus	
	Intermediate			
	Flexor digitorum superficialis		Flexor digitorum superficialis	
	Superficial			
	Flexor carpi radialis		Flexor carpi radialis	
	Flexor carpi ulnaris		Flexor carpi ulnaris	
	Palmaris longus		Palmaris longus	
	Pronators			
	Pronator quadratus			Pronator quadratus
	Pronator teres			Pronator teres
	Posterior muscles			
	Extensors			
	Deep			
	Abductor pollicis longus			Abductor pollicis longus
	Extensor indicis	Extensor indicis		
	Extensor pollicis brevis	Extensor pollicis brevis		
	Extensor pollicis longus	Extensor pollicis longus		
	Superficial			
	Brachioradialis			Brachioradialis
	Extensor carpi radialis brevis	Extensor carpi radialis brevis		
	Extensor carpi radialis longus	Extensor carpi radialis longus		
	Extensor carpi ulnaris	Extensor carpi ulnaris		
	Extensor digiti minimi	Extensor digiti minimi		
	Extensor digitorum	Extensor digitorum		
	Anconeus	Anconeus		
	Supinator			Supinator

## Chapter 21. Factors Influencing Health Status and Contact With Health Services (Z00-Z99)

### NOTE

Z codes represent reasons for encounters. A corresponding procedure code must accompany a Z code if a procedure is performed. Categories Z00-Z99 are provided for occasions when circumstances other than a disease, injury or external cause classifiable to categories A00-Y89 are recorded as "diagnoses" or "problems." This can arise in two main ways:

(a) When a person who may or may not be sick encounters the health services for some specific purpose, such as to receive limited care or service for a current condition, to donate an organ or tissue, to receive prophylactic vaccination (immunization), or to discuss a problem which is in itself not a disease or injury.

(b) When some circumstance or problem is present which influences the person's health status but is not in itself a current illness or injury.

AHA: 2018,4Q,60-61

This chapter contains the following blocks:

Z00-Z13	Persons encountering health services for examinations
Z14-Z15	Genetic carrier and genetic susceptibility to disease
Z16	Resistance to antimicrobial drugs
Z17	▶ Estrogen, and other hormones and factors receptor status ◀
Z18	Retained foreign body fragments
Z19	Hormone sensitivity malignancy status
Z20-Z29	Persons with potential health hazards related to communicable diseases
Z30-Z39	Persons encountering health services in circumstances related to reproduction
Z40-Z53	Encounters for other specific health care
Z55-Z65	Persons with potential health hazards related to socioeconomic and psychosocial circumstances
Z66	Do not resuscitate status
Z67	Blood type
Z68	Body mass index (BMI)
Z69-Z76	Persons encountering health services in other circumstances
Z77-Z99	Persons with potential health hazards related to family and personal history and certain conditions influencing health status

### Persons encountering health services for examinations (Z00-Z13)

### NOTE

Nonspecific abnormal findings disclosed at the time of these examinations are classified to categories R70-R94.

**EXCLUDES 1** examinations related to pregnancy and reproduction (Z30-Z36, Z39.-)

**✓ 4th** **Z00** Encounter for general examination without complaint, suspected or reported diagnosis

**EXCLUDES 1** encounter for examination for administrative purposes (Z02.-)

**EXCLUDES 2** encounter for pre-procedural examinations (Z01.81-) special screening examinations (Z11-Z13)

AHA: 2017,4Q,95

**✓ 5th** **Z00.0** Encounter for general adult medical examination

Encounter for adult periodic examination (annual) (physical) and any associated laboratory and radiologic examinations

**EXCLUDES 1** encounter for examination of sign or symptom - code to sign or symptom

general health check-up of infant or child (Z00.12.-)

**Z00.00** Encounter for general adult medical examination without abnormal findings **PDx A**

Encounter for adult health check-up NOS

AHA: 2016,1Q,36

**Z00.01** Encounter for general adult medical examination with abnormal findings **PDx A**

Use additional code to identify abnormal findings

AHA: 2016,1Q,35-36

**✓ 5th** **Z00.1** Encounter for newborn, infant and child health examinations

**✓ 6th** **Z00.11** Newborn health examination

Health check for child under 29 days old

Use additional code to identify any abnormal findings

**EXCLUDES 1** health check for child over 28 days old (Z00.12.-)

**Z00.110** Health examination for newborn under 8 days old **PDx N**

Health check for newborn under 8 days old

**Z00.111** Health examination for newborn 8 to 28 days old **PDx N**

Health check for newborn 8 to 28 days old

Newborn weight check

**✓ 6th** **Z00.12** Encounter for routine child health examination

Health check (routine) for child over 28 days old  
Immunizations appropriate for age  
Routine developmental screening of infant or child  
Routine vision and hearing testing

**EXCLUDES 1** health check for child under 29 days old (Z00.11.-)

health supervision of foundling or other

healthy infant or child (Z76.1-Z76.2)

newborn health examination (Z00.11.-)

AHA: 2018,4Q,36

**Z00.121** Encounter for routine child health examination with abnormal findings **PDx P**

Use additional code to identify abnormal findings

AHA: 2016,1Q,34-35

**Z00.129** Encounter for routine child health examination without abnormal findings **PDx P**

Encounter for routine child health examination NOS

AHA: 2016,1Q,34

**Z00.2** Encounter for examination for period of rapid growth in childhood **PDx P**

**Z00.3** Encounter for examination for adolescent development state **PDx P**

Encounter for puberty development state

**Z00.5** Encounter for examination of potential donor of organ and tissue **PDx**

**Z00.6** Encounter for examination for normal comparison and control in clinical research program

Examination of participant or control in clinical research program

**✓ 5th** **Z00.7** Encounter for examination for period of delayed growth in childhood

**Z00.70** Encounter for examination for period of delayed growth in childhood without abnormal findings **PDx P**

**Z00.71** Encounter for examination for period of delayed growth in childhood with abnormal findings **PDx P**

Use additional code to identify abnormal findings

**Z00.8** Encounter for other general examination **PDx**

Encounter for health examination in population surveys

**✓ 4th** **Z01** Encounter for other special examination without complaint, suspected or reported diagnosis

**INCLUDES** routine examination of specific system

**NOTE** Codes from category Z01 represent the reason for the encounter. A separate procedure code is required to identify any examinations or procedures performed

**EXCLUDES 1** encounter for examination for administrative purposes (Z02.-) encounter for examination for suspected conditions, proven not to exist (Z03.-)

encounter for laboratory and radiologic examinations as a component of general medical examinations (Z00.0.-)

encounter for laboratory, radiologic and imaging examinations for sign(s) and symptom(s) - code to the sign(s) or symptom(s)

**EXCLUDES 2** screening examinations (Z11-Z13)

**✓ 5th** **Z01.0** Encounter for examination of eyes and vision

**EXCLUDES 1** examination for driving license (Z02.4)

**Z01.00** Encounter for examination of eyes and vision without abnormal findings **PDx**

Encounter for examination of eyes and vision NOS

**Z01.01** Encounter for examination of eyes and vision with abnormal findings **PDx**

Use additional code to identify abnormal findings

AHA: 2016,4Q,21

**✓ 6th** **Z01.02** Encounter for examination of eyes and vision following failed vision screening

**EXCLUDES 1** encounter for examination of eyes and vision with abnormal findings (Z01.01)

encounter for examination of eyes and vision without abnormal findings (Z01.00)

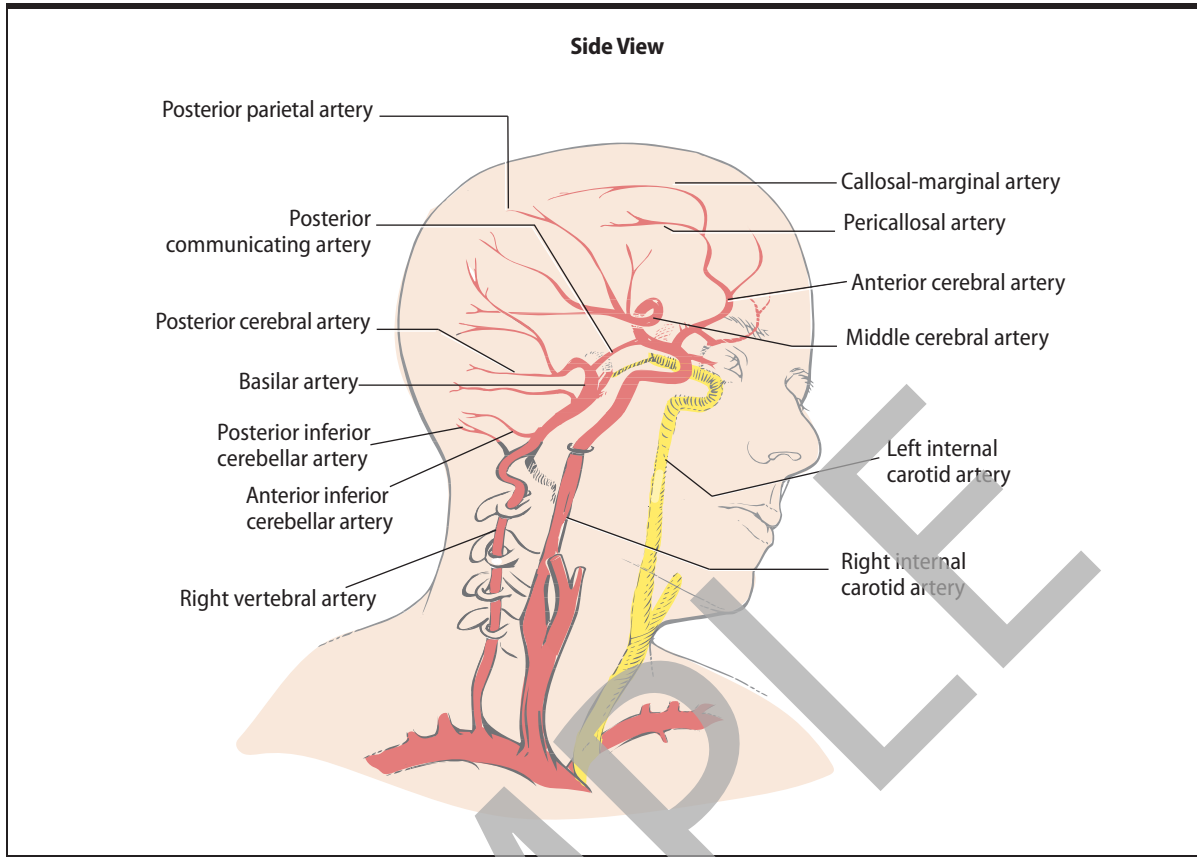
(Z01.00)

AHA: 2019,4Q,20

**Z01.020** Encounter for examination of eyes and vision following failed vision screening without abnormal findings **PDx**



**Internal Carotid and Vertebral Arteries and Branches**



**External Carotid Artery and Branches**

