

ICD-10-CM Expert for Skilled Nursing Facilities and Inpatient Rehabilitation Facilities

The complete official guidelines and code set
Codes valid from October 1, 2025
through September 30, 2026

Contents

How to Use ICD-10-CM Expert for Skilled Nursing Facilities and Inpatient Rehabilitation Facilities 2026	iii	Chapter 11. Diseases of the Digestive System (K00-K95)	727
Introduction	iii	Chapter 12. Diseases of the Skin and Subcutaneous Tissue (L00-L99)	755
What's New for 2026	iii	Chapter 13. Diseases of the Musculoskeletal System and Connective Tissue (M00-M99)	779
Conversion Table	iii	Chapter 14. Diseases of Genitourinary System (N00-N99)	871
10 Steps to Correct Coding	iii	Chapter 15. Pregnancy, Childbirth, and the Puerperium (O00-O9A)	893
Official ICD-10-CM Guidelines for Coding and Reporting	iii	Chapter 16. Certain Conditions Originating in the Perinatal Period (P00-P96)	933
Indexes	iii	Chapter 17. Congenital Malformations, Deformations, and Chromosomal Abnormalities (Q00-Q99)	947
Index to Diseases and Injuries	iii	Chapter 18. Symptoms, Signs, and Abnormal Clinical and Laboratory Findings, Not Elsewhere Classified (R00-R99)	969
Neoplasm Table.....	iii	Chapter 19. Injury, Poisoning, and Certain Other Consequences of External Causes (S00-T88)	991
Table of Drugs and Chemicals	iv	Chapter 20. External Causes of Morbidity (V00-Y99)	1199
External Causes Index	iv	Chapter 21. Factors Influencing Health Status and Contact with Health Services (Z00-Z99)	1267
Index Notations	iv	Chapter 22. Codes for Special Purposes (U00-U85).....	1307
Tabular List of Diseases	v	Appendixes	Appendixes-1
Code and Code Descriptions.....	v	Appendix A: Valid 3-character ICD-10-CM Codes.....	Appendixes-1
Tabular Notations	v	Appendix B: Pharmacology List 2026.....	Appendixes-3
Official Notations	v	Appendix C: Z Codes for Long-Term Drug Use with Associated Drugs	Appendixes-18
Optum Notations	vi	Appendix D: Skilled Nursing Facility Patient-Driven Payment Model	Appendixes-20
Icons	vi	Appendix E: PDPM Comorbid Conditions.....	Appendixes-23
Color Bars	vii	Appendix F: PDPM Return-to-Provider Code List	Appendixes-26
Chapter-Level Notations	viii	Appendix G: Skilled Nursing Facility Active Diagnosis List.....	Appendixes-32
Appendixes	viii	Appendix H: IRF Impairment Group Codes	Appendixes-34
Illustrations.....	viii	Appendix I: IRF Comorbid Conditions.....	Appendixes-39
What's New for 2026	ix	Appendix J: Coding Issues for Long-Term Care (LTC).....	Appendixes-45
Official Updates	ix	Illustrations	Illustrations-1
Proprietary Updates	ix	Chapter 3. Diseases of the Blood and Blood-forming Organs and Certain Disorders Involving the Immune Mechanism (D50-D89)	Illustrations-1
Conversion Table of ICD-10-CM Codes	x	Red Blood Cells	Illustrations-1
10 Steps to Correct Coding	xii	White Blood Cell	Illustrations-1
ICD-10-CM Official Guidelines for Coding and Reporting	Coding Guidelines-1	Platelet	Illustrations-2
ICD-10-CM Index to Diseases and Injuries	1	Coagulation	Illustrations-2
ICD-10-CM Neoplasm Table	339	Spleen Anatomical Location and External Structures	Illustrations-3
ICD-10-CM Table of Drugs and Chemicals	358	Spleen Interior Structures	Illustrations-3
ICD-10-CM Index to External Causes	408	Chapter 4. Endocrine, Nutritional, and Metabolic Diseases (E00-E89)	Illustrations-4
ICD-10-CM Tabular List of Diseases and Injuries	445	Endocrine System	Illustrations-4
Chapter 1. Certain Infectious and Parasitic Diseases (A00-B99), U07.1, U09.9	445	Thyroid	Illustrations-5
Chapter 2. Neoplasms (C00-D49)	471	Thyroid and Parathyroid Glands	Illustrations-5
Chapter 3. Diseases of the Blood and Blood-forming Organs and Certain Disorders Involving the Immune Mechanism (D50-D89)	513	Pancreas	Illustrations-6
Chapter 4. Endocrine, Nutritional, and Metabolic Diseases (E00-E89)	527	Anatomy of the Adrenal Gland	Illustrations-6
Chapter 5. Mental, Behavioral and Neurodevelopmental Disorders (F01-F99)	551	Structure of an Ovary	Illustrations-7
Chapter 6. Diseases of the Nervous System (G00-G99)	583	Testis and Associated Structures	Illustrations-7
Chapter 7. Diseases of the Eye and Adnexa (H00-H59)	607	Thymus	Illustrations-8
Chapter 8. Diseases of the Ear and Mastoid Process (H60-H95)	647		
Chapter 9. Diseases of the Circulatory System (I00-I99)	661		
Chapter 10. Diseases of the Respiratory System (J00-J99), U07.0	709		

<p>Chapter 6. Diseases of the Nervous System (G00–G99) Illustrations–9</p> <p style="padding-left: 20px;">Brain Illustrations–9</p> <p style="padding-left: 20px;">Cranial Nerves Illustrations–9</p> <p style="padding-left: 20px;">Peripheral Nervous System Illustrations–10</p> <p style="padding-left: 20px;">Spinal Cord and Spinal Nerves Illustrations–11</p> <p style="padding-left: 20px;">Nerve Cell Illustrations–12</p> <p style="padding-left: 20px;">Trigeminal and Facial Nerve Branches Illustrations–12</p> <p>Chapter 7. Diseases of the Eye and Adnexa (H00–H59) Illustrations–13</p> <p style="padding-left: 20px;">Eye Illustrations–13</p> <p style="padding-left: 20px;">Posterior Pole of Globe/Flow of Aqueous Humor Illustrations–13</p> <p style="padding-left: 20px;">Lacrimal System Illustrations–14</p> <p style="padding-left: 20px;">Eye Musculature Illustrations–14</p> <p style="padding-left: 20px;">Eyelid Structures Illustrations–14</p> <p>Chapter 8. Diseases of the Ear and Mastoid Process (H60–H95) Illustrations–15</p> <p style="padding-left: 20px;">Ear Anatomy Illustrations–15</p> <p>Chapter 9. Diseases of the Circulatory System (I00–I99) Illustrations–16</p> <p style="padding-left: 20px;">Anatomy of the Heart Illustrations–16</p> <p style="padding-left: 20px;">Heart Cross Section Illustrations–16</p> <p style="padding-left: 20px;">Heart Valves Illustrations–17</p> <p style="padding-left: 20px;">Heart Conduction System Illustrations–17</p> <p style="padding-left: 20px;">Coronary Arteries Illustrations–18</p> <p style="padding-left: 20px;">Arteries Illustrations–19</p> <p style="padding-left: 20px;">Veins Illustrations–20</p> <p style="padding-left: 20px;">Internal Carotid and Vertebral Arteries and Branches Illustrations–21</p> <p style="padding-left: 20px;">External Carotid Artery and Branches Illustrations–21</p> <p style="padding-left: 20px;">Branches of Abdominal Aorta Illustrations–22</p> <p style="padding-left: 20px;">Portal Venous Circulation Illustrations–22</p> <p style="padding-left: 20px;">Lymphatic System Illustrations–23</p> <p style="padding-left: 20px;">Axillary Lymph Nodes Illustrations–24</p> <p style="padding-left: 20px;">Lymphatic System of Head and Neck Illustrations–24</p> <p style="padding-left: 20px;">Lymphatic Capillaries Illustrations–25</p> <p style="padding-left: 20px;">Lymphatic Drainage Illustrations–25</p> <p>Chapter 10. Diseases of the Respiratory System (J00–J99), U07.0 Illustrations–26</p> <p style="padding-left: 20px;">Respiratory System Illustrations–26</p> <p style="padding-left: 20px;">Upper Respiratory System Illustrations–27</p> <p style="padding-left: 20px;">Lower Respiratory System Illustrations–27</p> <p style="padding-left: 20px;">Paranasal Sinuses Illustrations–27</p> <p style="padding-left: 20px;">Lung Segments Illustrations–28</p> <p style="padding-left: 20px;">Alveoli Illustrations–28</p>	<p>Chapter 11. Diseases of the Digestive System (K00–K95) Illustrations–29</p> <p style="padding-left: 20px;">Digestive System Illustrations–29</p> <p style="padding-left: 20px;">Omentum and Mesentery Illustrations–30</p> <p style="padding-left: 20px;">Peritoneum and Retroperitoneum Illustrations–30</p> <p>Chapter 12. Diseases of the Skin and Subcutaneous Tissue (L00–L99) Illustrations–31</p> <p style="padding-left: 20px;">Nail Anatomy Illustrations–31</p> <p style="padding-left: 20px;">Skin and Subcutaneous Tissue Illustrations–31</p> <p>Chapter 13. Diseases of the Musculoskeletal System and Connective Tissue (M00–M99) Illustrations–32</p> <p style="padding-left: 20px;">Bones and Joints Illustrations–32</p> <p style="padding-left: 20px;">Shoulder Anterior View Illustrations–33</p> <p style="padding-left: 20px;">Shoulder Posterior View Illustrations–33</p> <p style="padding-left: 20px;">Elbow Anterior View Illustrations–33</p> <p style="padding-left: 20px;">Elbow Posterior View Illustrations–33</p> <p style="padding-left: 20px;">Hand Illustrations–33</p> <p style="padding-left: 20px;">Hip Anterior View Illustrations–34</p> <p style="padding-left: 20px;">Hip Posterior View Illustrations–34</p> <p style="padding-left: 20px;">Knee Anterior View Illustrations–34</p> <p style="padding-left: 20px;">Knee Posterior View Illustrations–34</p> <p style="padding-left: 20px;">Foot Illustrations–34</p> <p style="padding-left: 20px;">Muscles Illustrations–35</p> <p>Chapter 14. Diseases of Genitourinary System (N00–N99) Illustrations–36</p> <p style="padding-left: 20px;">Urinary System Illustrations–36</p> <p style="padding-left: 20px;">Male Genitourinary System Illustrations–37</p> <p style="padding-left: 20px;">Female Internal Genitalia Illustrations–37</p> <p style="padding-left: 20px;">Female Genitourinary Tract Lateral View Illustrations–37</p> <p>Chapter 15. Pregnancy, Childbirth, and the Puerperium (O00–O9A) Illustrations–38</p> <p style="padding-left: 20px;">Term Pregnancy – Single Gestation Illustrations–38</p> <p style="padding-left: 20px;">Twin Gestation–Dichorionic–Diamniotic (DI-DI) Illustrations–38</p> <p style="padding-left: 20px;">Twin Gestation–Monochorionic–Diamniotic (MO-DI) Illustrations–39</p> <p style="padding-left: 20px;">Twin Gestation–Monochorionic–Monoamniotic (MO-MO) Illustrations–39</p> <p>Chapter 19. Injury, Poisoning, and Certain Other Consequences of External Causes (S00–T88) Illustrations–40</p> <p style="padding-left: 20px;">Types of Fractures Illustrations–40</p> <p style="padding-left: 20px;">Salter-Harris Fracture Types Illustrations–40</p>
---	--

Age Edits

N Newborn Age: 0
These diagnoses are intended for newborns and neonates and the patient's age must be 0 years.

N47.0 Adherent prepuce, newborn RP N

P Pediatric Age: 0-17
These diagnoses are intended for children and the patient's age must be between 0 and 17 years.

L21.1 Seborrheic infantile dermatitis RP P

M Maternity Age: 9-64
These diagnoses are intended for childbearing patients between the age of 9 and 64 years.

O02.9 Abnormal product of conception, unspecified RP M

A Adult Age: 15-124
These diagnoses are intended for patients between the age of 15 and 124 years.

R54 Age-related physical debility RP A
Frailty
Old age
Senescence
Senile asthenia
Senile debility
EXCLUDES1 *age-related cognitive decline (R41.81)*
sarcopenia (M62.84)
senile psychosis (F03.-)
senility NOS (R41.81)

Sex Edits

Effective April 1, 2024, the Integrated Outpatient Code Editor (IOCE), a program used to process claims for outpatient providers, has deactivated the sex conflict edit. There will no longer be a female or male edit restriction for ICD-10-CM codes.

NA Non-therapy Ancillary
This icon identifies diagnoses that are considered comorbid conditions for the non-therapy ancillary (NTA) payment component of the Patient Driven Payment Model (PDPM). For a comprehensive list of all NTA comorbidity diagnosis codes, please refer to appendix E, at the back of this book.

A31.0 Pulmonary mycobacterial infection NA
Infection due to *Mycobacterium avium*
Infection due to *Mycobacterium intracellulare* [Battey bacillus]
Infection due to *Mycobacterium kansasii*

SL Speech-language Pathology
This icon identifies diagnoses that are considered comorbid conditions for the speech-language pathology (SLP) payment component of the Patient Driven Payment Model (PDPM). For a comprehensive list of all SLP comorbidity diagnosis codes, please refer to appendix E, at the back of this book.

C02.1 Malignant neoplasm of border of tongue SL
Malignant neoplasm of tip of tongue

RP Return to Provider
This icon identifies a diagnosis code that is unspecified, ambiguous, or is specified in the ICD-10-CM official coding guidelines and conventions to be inappropriate for reporting as the principal diagnosis. If one of these codes is reported as the principal diagnosis on the minimum data set (MDS), the MDS should be returned to the provider to select an appropriate ICD-10-CM code. For a comprehensive list of all return-to-provider codes, refer to appendix F, at the back of this book.

B90.0 Sequelae of central nervous system tuberculosis RP

ED IRF Etiologic Diagnosis
This icon identifies diagnoses that represent an etiologic diagnosis. The etiologic diagnosis, entered into Item 22 of the IRF-PAI, is the problem that led to the condition represented by the impairment group code (IGC), entered into Item 21 of the IRF-PAI. For a comprehensive list of impairment groups to which these etiologic diagnoses may be grouped, please refer to appendix H, at the back of this book.

G37.1 Central demyelination of corpus callosum ED

CC IRF Comorbid Condition
This icon identifies diagnoses that are considered comorbid conditions for an inpatient rehabilitation admission. When reported as secondary diagnoses, these conditions are recognized as having a significant impact on the cost of furnishing inpatient rehabilitation services, therefore qualifying a case for payment adjustment. Comorbid conditions are entered into Item 24 of the IRF-PAI. For a comprehensive list of all comorbid conditions, please refer to appendix I, at the back of this book.

A32.89 Other forms of listeriosis CC
Listerial cerebral arteritis

Color Bars

Manifestation Code
Codes defined as manifestation codes appear in italic type, with a blue color bar over the code description. A manifestation cannot be reported as a first-listed code; it is sequenced as a secondary diagnosis with the underlying disease code listed first.

G32.89 Other specified degenerative disorders of nervous system in diseases classified elsewhere RP
Degenerative encephalopathy in diseases classified elsewhere

Unspecified Diagnosis
Codes that appear with a gray color bar over the alphanumeric code identify unspecified diagnoses. These codes should be used in limited circumstances, when neither the diagnostic statement nor the documentation provides enough information to assign a more specific diagnosis code. The abbreviation NOS, "not otherwise specified," in the tabular list may be interpreted as "unspecified."

G03.9 Meningitis, unspecified CC
Arachnoiditis (spinal) NOS
RIC Excl: 03 Non-traumatic brain injury; 05 Non-traumatic spinal cord injury

ICD-10-CM Index to Diseases and Injuries

A

Aarskog's syndrome Q87.19

Abandonment — see Maltreatment

Abasia (-astasia) (hysterical) F44.4

Abderhalden-Kaufmann-Lignac syndrome (cystinosis) E72.04

Abdomen, abdominal — see also condition

acute R10.0

angina K55.1

muscle deficiency syndrome Q79.4

Abdominalgia — see Pain, abdominal

Abduction contracture, hip or other joint — see Contraction, joint

Aberrant (congenital) — see also Malposition, congenital

adrenal gland Q89.1

artery (peripheral) Q27.8

basilar NEC Q28.1

cerebral Q28.3

coronary Q24.5

digestive system Q27.8

eye Q15.8

lower limb Q27.8

precerebral Q28.1

pulmonary Q25.79

renal Q27.2

retina Q14.1

specified site NEC Q27.8

subclavian Q27.8

upper limb Q27.8

vertebral Q28.1

breast Q83.8

endocrine gland NEC Q89.2

hepatic duct Q44.5

pancreas Q45.3

parathyroid gland Q89.2

pituitary gland Q89.2

sebaceous glands, mucous membrane, mouth, congenital Q38.6

spleen Q89.09

subclavian artery Q27.8

thymus (gland) Q89.2

thyroid gland Q89.2

vein (peripheral) NEC Q27.8

cerebral Q28.3

digestive system Q27.8

lower limb Q27.8

precerebral Q28.1

specified site NEC Q27.8

upper limb Q27.8

Aberration

distantial — see Disturbance, visual

mental F99

Abetalipoproteinemia E78.6

Abiotrophy R68.89

Ablatio, ablation

retinae — see Detachment, retina

Ablepharia, ablepharon Q10.3

Abnormal, abnormality, abnormalities — see also

Anomaly

acid-base balance (mixed) E87.4

albumin R77.0

alphafetoprotein R77.2

alveolar ridge K08.9

anatomical relationship Q89.9

apertures, congenital, diaphragm Q79.1

atrial septal, specified NEC Q21.19

auditory perception H93.29-

diplacusis — see Diplacusis

hyperacusis — see Hyperacusis

recruitment — see Recruitment, auditory

threshold shift — see Shift, auditory threshold

autosomes Q99.9

fragile site Q95.5

basal metabolic rate R94.8

biosynthesis, testicular androgen E29.1

bleeding time R79.1

blood amino-acid level R79.83

blood level (of)

cobalt R79.0

copper R79.0

iron R79.0

Abnormal, abnormality, abnormalities — continued

blood level — continued

lithium R78.89

magnesium R79.0

mineral NEC R79.0

zinc R79.0

blood pressure

elevated R03.0

low reading (nonspecific) R03.1

blood sugar R73.09

blood-gas level R79.81

bowel sounds R19.15

absent R19.11

hyperactive R19.12

brain scan R94.02

breathing R06.9

caloric test R94.138

cerebrospinal fluid R83.9

cytology R83.6

drug level R83.2

enzyme level R83.0

hormones R83.1

immunology R83.4

microbiology R83.5

nonmedicinal level R83.3

specified type NEC R83.8

chemistry, blood R79.9

C-reactive protein R79.82

drugs — see Findings, abnormal, in blood

gas level R79.81

minerals R79.0

pancytopenia D61.818

PTT R79.1

specified NEC R79.89

toxins — see Findings, abnormal, in blood

chest sounds (friction) (rales) R09.89

chromosome, chromosomal Q99.9

with more than three X chromosomes, female Q97.1

analysis result R89.8

bronchial washings R84.8

cerebrospinal fluid R83.8

cervix uteri NEC R87.89

nasal secretions R84.8

nipple discharge R89.8

peritoneal fluid R85.89

pleural fluid R84.8

prostatic secretions R86.8

saliva R85.89

semenal fluid R86.8

sputum R84.8

synovial fluid R89.8

throat scrapings R84.8

vagina R87.89

vulva R87.89

wound secretions R89.8

dicentric replacement Q93.2

ring replacement Q93.2

sex Q99.8

female phenotype Q97.9

specified NEC Q97.8

male phenotype Q98.9

specified NEC Q98.8

structural male Q98.6

specified NEC Q99.8

clinical findings NEC R68.89

coagulation D68.9

newborn, transient P61.6

profile R79.1

time R79.1

communication — see Fistula

conjunctiva, vascular H11.41-

coronary artery Q24.5

cortisol-binding globulin E27.8

course, eustachian tube Q17.8

creatinine clearance R94.4

cytology

anus R85.619

atypical squamous cells cannot exclude high grade

squamous intraepithelial lesion (ASC-H)

R85.611

atypical squamous cells of undetermined signifi-

cance (ASC-US) R85.610

cytologic evidence of malignancy R85.614

Abnormal, abnormality, abnormalities — continued

cytology — continued

anus — continued

high grade squamous intraepithelial lesion (HGSIL)

R85.613

human papillomavirus (HPV) DNA test

high risk positive R85.81

low risk positive R85.82

inadequate smear R85.615

low grade squamous intraepithelial lesion (LGSIL)

R85.612

satisfactory anal smear but lacking transformation

zone R85.616

specified NEC R85.618

unsatisfactory smear R85.615

female genital organs — see Abnormal, Papanicolaou

(smear)

dark adaptation curve H53.61

dentofacial NEC — see Anomaly, dentofacial

development, developmental Q89.9

central nervous system Q07.9

diagnostic imaging

abdomen, abdominal region NEC R93.5

biliary tract R93.2

bladder R93.41

breast R92.8

central nervous system NEC R90.89

cerebrovascular NEC R90.89

coronary circulation R93.1

digestive tract NEC R93.3

gastrointestinal (tract) R93.3

genitourinary organs R93.89

head R93.0

heart R93.1

intrathoracic organ NEC R93.89

kidney R93.42-

limbs R93.6

liver R93.2

lung (field) R91.8

musculoskeletal system NEC R93.7

renal pelvis R93.41

retroperitoneum R93.5

site specified NEC R93.89

skin and subcutaneous tissue R93.89

skull R93.0

testis R93.81-

ureter R93.41

urinary organs specified NEC R93.49

direction, teeth, fully erupted M26.30

ear ossicles, acquired NEC H74.39-

ankylosis — see Ankylosis, ear ossicles

discontinuity — see Discontinuity, ossicles, ear

partial loss — see Loss, ossicles, ear (partial)

Ebstein Q22.5

echocardiogram R93.1

echoencephalogram R90.81

echogram — see Abnormal, diagnostic imaging

electrocardiogram [ECG] [EKG] R94.31

electroencephalogram [EEG] R94.01

electrolyte — see Imbalance, electrolyte

electromyogram [EMG] R94.131

electro-oculogram [EOG] R94.110

electrophysiological intracardiac studies R94.39

electroretinogram [ERG] R94.111

erythrocytes

congenital, with perinatal jaundice D58.9

feces (color) (contents) (mucus) R19.5

finding — see Findings, abnormal, without diagnosis

fluid

amniotic — see Abnormal, specimen, specified

cerebrospinal — see Abnormal, cerebrospinal fluid

peritoneal — see Abnormal, specimen, digestive or-

gans

pleural — see Abnormal, specimen, respiratory organs

synovial — see Abnormal, specimen, specified

thorax (bronchial washings) (pleural fluid) — see Ab-

normal, specimen, respiratory organs

vaginal — see Abnormal, specimen, female genital

organs

form

teeth K00.2

uterus — see Anomaly, uterus

	Malignant Primary	Malignant Secondary	Ca in situ	Benign	Uncertain Behavior	Unspecified Behavior		Malignant Primary	Malignant Secondary	Ca in situ	Benign	Uncertain Behavior	Unspecified Behavior
Neoplasm, neoplastic							Neoplasm, neoplastic						
— <i>continued</i>							— <i>continued</i>						
brain — <i>continued</i>							bronchus — <i>continued</i>						
basal ganglia	C71.0	C79.31	—	D33.0	D43.0	D49.6	main	C34.0-✓	C78.0-✓	D02.2-✓	D14.3-✓	D38.1	D49.1
cerebellopontine angle	C71.6	C79.31	—	D33.1	D43.1	D49.6	middle lobe of lung	C34.2	C78.0-✓	D02.21	D14.31	D38.1	D49.1
cerebellum NOS	C71.6	C79.31	—	D33.1	D43.1	D49.6	overlapping lesion	C34.8-✓	—	—	—	—	—
cerebrum	C71.0	C79.31	—	D33.0	D43.0	D49.6	upper lobe of lung	C34.1-✓	C78.0-✓	D02.2-✓	D14.3-✓	D38.1	D49.1
choroid plexus	C71.7	C79.31	—	D33.1	D43.1	D49.6	brow	C44.309	C79.2	D04.39	D23.39	D48.5	D49.2
corpus callosum	C71.8	C79.31	—	D33.2	D43.2	D49.6	basal cell carcinoma specified type NEC	C44.319	—	—	—	—	—
corpus striatum	C71.0	C79.31	—	D33.0	D43.0	D49.6	squamous cell carcinoma	C44.329	—	—	—	—	—
cortex (cerebral)	C71.0	C79.31	—	D33.0	D43.0	D49.6	buccal (cavity)	C06.9	C79.89	D00.00	D10.39	D37.09	D49.0
frontal lobe	C71.1	C79.31	—	D33.0	D43.0	D49.6	commissure	C06.0	C79.89	D00.02	D10.39	D37.09	D49.0
globus pallidus	C71.0	C79.31	—	D33.0	D43.0	D49.6	groove (lower)	C06.1	C79.89	D00.02	D10.39	D37.09	D49.0
hippocampus	C71.2	C79.31	—	D33.0	D43.0	D49.6	(upper)	C06.0	C79.89	D00.02	D10.39	D37.09	D49.0
hypothalamus	C71.0	C79.31	—	D33.0	D43.0	D49.6	mucosa	C06.0	C79.89	D00.02	D10.39	D37.09	D49.0
internal capsule	C71.0	C79.31	—	D33.0	D43.0	D49.6	sulcus (lower)	C06.1	C79.89	D00.02	D10.39	D37.09	D49.0
medulla							(upper)	C06.1	C79.89	D00.02	D10.39	D37.09	D49.0
oblongata	C71.7	C79.31	—	D33.1	D43.1	D49.6	bulbourethral gland	C68.0	C79.19	D09.19	D30.4	D41.3	D49.59
meninges	C70.0	C79.32	—	D32.0	D42.0	D49.7	bursa — <i>see</i> Neoplasm, connective tissue						
midbrain	C71.7	C79.31	—	D33.1	D43.1	D49.6	buttock NEC	C76.3	C79.89	D04.5	D36.7	D48.7	D49.89
occipital lobe	C71.4	C79.31	—	D33.0	D43.0	D49.6	calf	C76.5-✓	C79.89	D04.7-✓	D36.7	D48.7	D49.89
overlapping lesion	C71.8	C79.31	—	—	—	—	calvarium	C41.0	C79.51	—	D16.4	D48.0	D49.2
parietal lobe	C71.3	C79.31	—	D33.0	D43.0	D49.6	calyx, renal canal	C65.1-✓	C79.0-✓	D09.19	D30.1-✓	D41.1-✓	D49.51-✓
peduncle	C71.7	C79.31	—	D33.1	D43.1	D49.6	anal	C21.1	C78.5	D01.3	D12.9	D37.8	D49.0
pons	C71.7	C79.31	—	D33.1	D43.1	D49.6	auditory (external) — <i>see also</i> Neoplasm, skin, ear	C44.20-✓	C79.2	D04.2-✓	D23.2-✓	D48.5	D49.2
stem	C71.7	C79.31	—	D33.1	D43.1	D49.6	auricular (external) — <i>see also</i> Neoplasm, skin, ear	C44.20-✓	C79.2	D04.2-✓	D23.2-✓	D48.5	D49.2
tapetum	C71.8	C79.31	—	D33.2	D43.2	D49.6	canaliculi, biliary (biliferi)	C22.1	C78.7	D01.5	D13.4	D37.6	D49.0
temporal lobe	C71.2	C79.31	—	D33.0	D43.0	D49.6	(intrahepatic)	C22.1	C78.7	D01.5	D13.4	D37.6	D49.0
thalamus	C71.0	C79.31	—	D33.0	D43.0	D49.6	canthus (eye) (inner)	C44.10-✓	C79.2	D04.1-✓	D23.1-✓	D48.5	D49.2
uncus	C71.2	C79.31	—	D33.0	D43.0	D49.6	basal cell carcinoma	C44.11-✓	—	—	—	—	—
ventricle (floor)	C71.5	C79.31	—	D33.0	D43.0	D49.6	sebaceous cell carcinoma	C44.13-✓	—	—	—	—	—
fourth	C71.7	C79.31	—	D33.1	D43.1	D49.6	specified type NEC	C44.19-✓	—	—	—	—	—
branchial (left) (cyst) (vestiges)	C10.4	C79.89	D00.08	D10.5	D37.05	D49.0	squamous cell carcinoma	C44.12-✓	—	—	—	—	—
breast (connective tissue) (glandular tissue) (soft parts)	C50.9-✓	C79.81	D05.1-✓	D24.1-✓	D48.6-✓	D49.3	capillary — <i>see</i> Neoplasm, connective tissue	C18.0	C78.5	D01.0	D12.0	D37.4	D49.0
areola	C50.0-✓	C79.81	D05.1-✓	D24.1-✓	D48.6-✓	D49.3	caput coli	C18.0	C78.5	D01.0	D12.0	D37.4	D49.0
axillary tail	C50.6-✓	C79.81	D05.1-✓	D24.1-✓	D48.6-✓	D49.3	carcinoid — <i>see</i> Tumor, carcinoid	C16.0	C78.89	D00.2	D13.1	D37.1	D49.0
central portion	C50.1-✓	C79.81	D05.1-✓	D24.1-✓	D48.6-✓	D49.3	cardia (gastric)	C16.0	C78.89	D00.2	D13.1	D37.1	D49.0
inner	C50.8-✓	C79.81	D05.1-✓	D24.1-✓	D48.6-✓	D49.3	cardiac orifice (stomach)	C16.0	C78.89	D00.2	D13.1	D37.1	D49.0
lower	C50.8-✓	C79.81	D05.1-✓	D24.1-✓	D48.6-✓	D49.3	cardio-esophageal junction	C16.0	C78.89	D00.2	D13.1	D37.1	D49.0
lower-inner quadrant	C50.3-✓	C79.81	D05.1-✓	D24.1-✓	D48.6-✓	D49.3	cardio-esophagus carina (bronchus)	C34.0-✓	C78.0-✓	D02.2-✓	D14.3-✓	D38.1	D49.1
lower-outer quadrant	C50.5-✓	C79.81	D05.1-✓	D24.1-✓	D48.6-✓	D49.3	carotid (artery)	C49.0	C79.89	—	D21.0	D48.1-✓	D49.2
mastectomy site (skin) — <i>see also</i> Neoplasm, breast, skin	C44.501	C79.2	—	—	—	—	body	C75.4	C79.89	—	D35.5	D44.6	D49.7
specified as breast tissue	C50.8-✓	C79.81	—	—	—	—	carpus (any bone)	C40.1-✓	C79.51	—	D16.1-✓	—	—
midline	C50.8-✓	C79.81	D05.1-✓	D24.1-✓	D48.6-✓	D49.3	cartilage (articular) (joint) NEC — <i>see also</i> Neoplasm, bone	C41.9	C79.51	—	D16.9	D48.0	D49.2
nipple	C50.0-✓	C79.81	D05.1-✓	D24.1-✓	D48.6-✓	D49.3	arytenoid	C32.3	C78.39	D02.0	D14.1	D38.0	D49.1
outer	C50.8-✓	C79.81	D05.1-✓	D24.1-✓	D48.6-✓	D49.3	auricular	C49.0	C79.89	—	D21.0	D48.1-✓	D49.2
overlapping lesion	C50.8-✓	—	—	—	—	—	bronchi	C34.0-✓	C78.39	—	D14.3-✓	D38.1	D49.1
skin	C44.501	C79.2	D04.5	D23.5	D48.5	D49.2	costal	C41.3	C79.51	—	D16.7	D48.0	D49.2
basal cell carcinoma	C44.511	—	—	—	—	—	cricoid	C32.3	C78.39	D02.0	D14.1	D38.0	D49.1
specified type NEC	C44.591	—	—	—	—	—	cuneiform	C32.3	C78.39	D02.0	D14.1	D38.0	D49.1
squamous cell carcinoma	C44.521	—	—	—	—	—	ear (external)	C49.0	C79.89	—	D21.0	D48.1-✓	D49.2
tail (axillary)	C50.6-✓	C79.81	D05.1-✓	D24.1-✓	D48.6-✓	D49.3	ensiform	C41.3	C79.51	—	D16.7	D48.0	D49.2
upper	C50.8-✓	C79.81	D05.1-✓	D24.1-✓	D48.6-✓	D49.3	epiglottis	C32.1	C78.39	D02.0	D14.1	D38.0	D49.1
upper-inner quadrant	C50.2-✓	C79.81	D05.1-✓	D24.1-✓	D48.6-✓	D49.3							
upper-outer quadrant	C50.4-✓	C79.81	D05.1-✓	D24.1-✓	D48.6-✓	D49.3							
broad ligament	C57.1-✓	C79.82	D07.39	D28.2	D39.8	D49.59							
bronchiogenic, bronchogenic (lung)	C34.9-✓	C78.0-✓	D02.2-✓	D14.3-✓	D38.1	D49.1							
bronchiole	C34.9-✓	C78.0-✓	D02.2-✓	D14.3-✓	D38.1	D49.1							
bronchus	C34.9-✓	C78.0-✓	D02.2-✓	D14.3-✓	D38.1	D49.1							
carina	C34.0-✓	C78.0-✓	D02.2-✓	D14.3-✓	D38.1	D49.1							
lower lobe of lung	C34.3-✓	C78.0-✓	D02.2-✓	D14.3-✓	D38.1	D49.1							

Substance	Poisoning, Accidental (unintentional)	Poisoning, Intentional Self-harm	Poisoning, Assault	Poisoning, Undetermined	Adverse Effect	Under-dosing	Substance	Poisoning, Accidental (unintentional)	Poisoning, Intentional Self-harm	Poisoning, Assault	Poisoning, Undetermined	Adverse Effect	Under-dosing
Androstalolone	T38.7X1	T38.7X2	T38.7X3	T38.7X4	T38.7X5	T38.7X6	Anthilimine	T37.4X1	T37.4X2	T37.4X3	T37.4X4	T37.4X5	T37.4X6
Androstanolone	T38.7X1	T38.7X2	T38.7X3	T38.7X4	T38.7X5	T38.7X6	Anthrakinone	T49.4X1	T49.4X2	T49.4X3	T49.4X4	T49.4X5	T49.4X6
Androstereone	T38.7X1	T38.7X2	T38.7X3	T38.7X4	T38.7X5	T38.7X6	Anthraxin	T45.1X1	T45.1X2	T45.1X3	T45.1X4	T45.1X5	T45.1X6
Anemone pulsatilla	T62.2X1	T62.2X2	T62.2X3	T62.2X4	—	—	Anthracin	T44.8X1	T44.8X2	T44.8X3	T44.8X4	T44.8X5	T44.8X6
Anesthesia							Antiallergic NEC	T45.0X1	T45.0X2	T45.0X3	T45.0X4	T45.0X5	T45.0X6
caudal	T41.3X1	T41.3X2	T41.3X3	T41.3X4	T41.3X5	T41.3X6	Antiandrogen NEC	T38.6X1	T38.6X2	T38.6X3	T38.6X4	T38.6X5	T38.6X6
endotracheal	T41.0X1	T41.0X2	T41.0X3	T41.0X4	T41.0X5	T41.0X6	Anti-anemic (drug) (preparation)	T45.8X1	T45.8X2	T45.8X3	T45.8X4	T45.8X5	T45.8X6
epidural	T41.3X1	T41.3X2	T41.3X3	T41.3X4	T41.3X5	T41.3X6	Antianxiety drug NEC	T43.501	T43.502	T43.503	T43.504	T43.505	T43.506
inhalation	T41.0X1	T41.0X2	T41.0X3	T41.0X4	T41.0X5	T41.0X6	Antiaris toxicaria	T65.891	T65.892	T65.893	T65.894	—	—
local	T41.3X1	T41.3X2	T41.3X3	T41.3X4	T41.3X5	T41.3X6	Antiarteriosclerotic drug	T46.6X1	T46.6X2	T46.6X3	T46.6X4	T46.6X5	T46.6X6
mucosal	T41.3X1	T41.3X2	T41.3X3	T41.3X4	T41.3X5	T41.3X6	Antiasthmatic drug NEC	T48.6X1	T48.6X2	T48.6X3	T48.6X4	T48.6X5	T48.6X6
muscle relaxation	T48.1X1	T48.1X2	T48.1X3	T48.1X4	T48.1X5	T48.1X6	Antibiotic Otic Suspension (Solution)*	T49.6X1	T49.6X2	T49.6X3	T49.6X4	T49.6X5	T49.6X6
nerve blocking	T41.3X1	T41.3X2	T41.3X3	T41.3X4	T41.3X5	T41.3X6	Antibiotic	T36.91	T36.92	T36.93	T36.94	T36.95	T36.96
plexus blocking	T41.3X1	T41.3X2	T41.3X3	T41.3X4	T41.3X5	T41.3X6	aminoglycoside	T36.5X1	T36.5X2	T36.5X3	T36.5X4	T36.5X5	T36.5X6
potentiated	T41.201	T41.202	T41.203	T41.204	T41.205	T41.206	anticancer	T45.1X1	T45.1X2	T45.1X3	T45.1X4	T45.1X5	T45.1X6
rectal	T41.201	T41.202	T41.203	T41.204	T41.205	T41.206	antifungal	T36.7X1	T36.7X2	T36.7X3	T36.7X4	T36.7X5	T36.7X6
general	T41.201	T41.202	T41.203	T41.204	T41.205	T41.206	antimycobacterial	T36.5X1	T36.5X2	T36.5X3	T36.5X4	T36.5X5	T36.5X6
local	T41.3X1	T41.3X2	T41.3X3	T41.3X4	T41.3X5	T41.3X6	antineoplastic	T45.1X1	T45.1X2	T45.1X3	T45.1X4	T45.1X5	T45.1X6
regional	T41.3X1	T41.3X2	T41.3X3	T41.3X4	T41.3X5	T41.3X6	b-lactam NEC	T36.1X1	T36.1X2	T36.1X3	T36.1X4	T36.1X5	T36.1X6
surface	T41.3X1	T41.3X2	T41.3X3	T41.3X4	T41.3X5	T41.3X6	cephalosporin (group)	T36.1X1	T36.1X2	T36.1X3	T36.1X4	T36.1X5	T36.1X6
Anesthetic NEC — see also Anesthesia	T41.41	T41.42	T41.43	T41.44	T41.45	T41.46	chloramphenicol (group)	T36.2X1	T36.2X2	T36.2X3	T36.2X4	T36.2X5	T36.2X6
with muscle relaxant							ENT	T49.6X1	T49.6X2	T49.6X3	T49.6X4	T49.6X5	T49.6X6
general	T41.201	T41.202	T41.203	T41.204	T41.205	T41.206	eye	T49.5X1	T49.5X2	T49.5X3	T49.5X4	T49.5X5	T49.5X6
local	T41.3X1	T41.3X2	T41.3X3	T41.3X4	T41.3X5	T41.3X6	fungicidal (local)	T49.0X1	T49.0X2	T49.0X3	T49.0X4	T49.0X5	T49.0X6
gaseous NEC	T41.0X1	T41.0X2	T41.0X3	T41.0X4	T41.0X5	T41.0X6	intestinal	T36.8X1	T36.8X2	T36.8X3	T36.8X4	T36.8X5	T36.8X6
general NEC	T41.201	T41.202	T41.203	T41.204	T41.205	T41.206	local	T49.0X1	T49.0X2	T49.0X3	T49.0X4	T49.0X5	T49.0X6
halogenated hydrocarbon derivatives NEC	T41.0X1	T41.0X2	T41.0X3	T41.0X4	T41.0X5	T41.0X6	macrolides	T36.3X1	T36.3X2	T36.3X3	T36.3X4	T36.3X5	T36.3X6
infiltration NEC	T41.3X1	T41.3X2	T41.3X3	T41.3X4	T41.3X5	T41.3X6	polypeptide specified NEC	T36.8X1	T36.8X2	T36.8X3	T36.8X4	T36.8X5	T36.8X6
intravenous NEC	T41.1X1	T41.1X2	T41.1X3	T41.1X4	T41.1X5	T41.1X6	tetracycline (group)	T36.8X1	T36.8X2	T36.8X3	T36.8X4	T36.8X5	T36.8X6
local NEC	T41.3X1	T41.3X2	T41.3X3	T41.3X4	T41.3X5	T41.3X6	throat	T49.6X1	T49.6X2	T49.6X3	T49.6X4	T49.6X5	T49.6X6
rectal	T41.201	T41.202	T41.203	T41.204	T41.205	T41.206	Anticancer agents NEC	T45.1X1	T45.1X2	T45.1X3	T45.1X4	T45.1X5	T45.1X6
general	T41.201	T41.202	T41.203	T41.204	T41.205	T41.206	Anticholesterolemic drug NEC	T46.6X1	T46.6X2	T46.6X3	T46.6X4	T46.6X5	T46.6X6
local	T41.3X1	T41.3X2	T41.3X3	T41.3X4	T41.3X5	T41.3X6	Anticholinergic NEC	T44.3X1	T44.3X2	T44.3X3	T44.3X4	T44.3X5	T44.3X6
regional NEC	T41.3X1	T41.3X2	T41.3X3	T41.3X4	T41.3X5	T41.3X6	Anticholinesterase	T44.0X1	T44.0X2	T44.0X3	T44.0X4	T44.0X5	T44.0X6
spinal NEC	T41.3X1	T41.3X2	T41.3X3	T41.3X4	T41.3X5	T41.3X6	organophosphorus insecticide	T44.0X1	T44.0X2	T44.0X3	T44.0X4	T44.0X5	T44.0X6
thiobarbiturate	T41.1X1	T41.1X2	T41.1X3	T41.1X4	T41.1X5	T41.1X6	nerve gas	T60.0X1	T60.0X2	T60.0X3	—	—	—
topical	T41.3X1	T41.3X2	T41.3X3	T41.3X4	T41.3X5	T41.3X6	reversible	T44.0X1	T44.0X2	T44.0X3	T44.0X4	T44.0X5	T44.0X6
Aneurine	T45.2X1	T45.2X2	T45.2X3	T45.2X4	T45.2X5	T45.2X6	ophthalmological	T49.5X1	T49.5X2	T49.5X3	T49.5X4	T49.5X5	T49.5X6
Angeliq*	T38.5X1	T38.5X2	T38.5X3	T38.5X4	T38.5X5	T38.5X6	Anticoagulant NEC	T45.511	T45.512	T45.513	T45.514	T45.515	T45.516
Angio-Conray	T50.8X1	T50.8X2	T50.8X3	T50.8X4	T50.8X5	T50.8X6	Antagonist	T45.7X1	T45.7X2	T45.7X3	T45.7X4	T45.7X5	T45.7X6
Angiotensin	T44.5X1	T44.5X2	T44.5X3	T44.5X4	T44.5X5	T44.5X6	Anti-common-cold drug NEC	T48.5X1	T48.5X2	T48.5X3	T48.5X4	T48.5X5	T48.5X6
Angiotensinamide	T44.991	T44.992	T44.993	T44.994	T44.995	T44.996	Anticonvulsant	T42.71	T42.72	T42.73	T42.74	T42.75	T42.76
Anhydrohydroxy-progesterone	T38.5X1	T38.5X2	T38.5X3	T38.5X4	T38.5X5	T38.5X6	barbiturate	T42.3X1	T42.3X2	T42.3X3	T42.3X4	T42.3X5	T42.3X6
Anhydron	T50.2X1	T50.2X2	T50.2X3	T50.2X4	T50.2X5	T50.2X6	combination (with barbiturate)	T42.3X1	T42.3X2	T42.3X3	T42.3X4	T42.3X5	T42.3X6
Anileridine	T40.491	T40.492	T40.493	T40.494	T40.495	T40.496	hydantoin	T42.0X1	T42.0X2	T42.0X3	T42.0X4	T42.0X5	T42.0X6
Aniline (dye) (liquid) analgesic derivatives, therapeutic NEC	T65.3X1	T65.3X2	T65.3X3	T65.3X4	—	—	hypnotic NEC	T42.6X1	T42.6X2	T42.6X3	T42.6X4	T42.6X5	T42.6X6
vapor	T65.3X1	T65.3X2	T65.3X3	T65.3X4	—	—	oxazolindione	T42.2X1	T42.2X2	T42.2X3	T42.2X4	T42.2X5	T42.2X6
Anisocorpine	T44.3X1	T44.3X2	T44.3X3	T44.3X4	T44.3X5	T44.3X6	pyrimidinedione	T42.6X1	T42.6X2	T42.6X3	T42.6X4	T42.6X5	T42.6X6
Anise oil	T47.5X1	T47.5X2	T47.5X3	T47.5X4	T47.5X5	T47.5X6	specified NEC	T42.6X1	T42.6X2	T42.6X3	T42.6X4	T42.6X5	T42.6X6
Anisidine	T65.3X1	T65.3X2	T65.3X3	T65.3X4	—	—	succinimide	T42.2X1	T42.2X2	T42.2X3	T42.2X4	T42.2X5	T42.2X6
Anisindione	T45.511	T45.512	T45.513	T45.514	T45.515	T45.516	Antidepressant	T43.201	T43.202	T43.203	T43.204	T43.205	T43.206
Anisotropine methyl-bromide	T44.3X1	T44.3X2	T44.3X3	T44.3X4	T44.3X5	T44.3X6	monoamine oxidase inhibitor	T43.1X1	T43.1X2	T43.1X3	T43.1X4	T43.1X5	T43.1X6
Anistreplase	T45.611	T45.612	T45.613	T45.614	T45.615	T45.616	selective serotonin norepinephrine reuptake inhibitor	T43.211	T43.212	T43.213	T43.214	T43.215	T43.216
Anorexiant (central)	T50.5X1	T50.5X2	T50.5X3	T50.5X4	T50.5X5	T50.5X6	selective serotonin reuptake inhibitor	T43.221	T43.222	T43.223	T43.224	T43.225	T43.226
Anorexic agents	T50.5X1	T50.5X2	T50.5X3	T50.5X4	T50.5X5	T50.5X6	specified NEC	T43.291	T43.292	T43.293	T43.294	T43.295	T43.296
Ansaid*	T39.311	T39.312	T39.313	T39.314	T39.315	T39.316	tetracycline	T43.021	T43.022	T43.023	T43.024	T43.025	T43.026
Ansamycin	T36.6X1	T36.6X2	T36.6X3	T36.6X4	T36.6X5	T36.6X6	triazolopyridine	T43.211	T43.212	T43.213	T43.214	T43.215	T43.216
Ant (bite) (sting)	T63.421	T63.422	T63.423	T63.424	—	—	tricyclic	T43.011	T43.012	T43.013	T43.014	T43.015	T43.016
Antabuse	T50.6X1	T50.6X2	T50.6X3	T50.6X4	T50.6X5	T50.6X6	Antidiabetic NEC	T38.3X1	T38.3X2	T38.3X3	T38.3X4	T38.3X5	T38.3X6
Antacid NEC	T47.1X1	T47.1X2	T47.1X3	T47.1X4	T47.1X5	T47.1X6	biguanide	T38.3X1	T38.3X2	T38.3X3	T38.3X4	T38.3X5	T38.3X6
Antagonist							and sulfonyl combined	T38.3X1	T38.3X2	T38.3X3	T38.3X4	T38.3X5	T38.3X6
Aldosterone	T50.0X1	T50.0X2	T50.0X3	T50.0X4	T50.0X5	T50.0X6	combined	T38.3X1	T38.3X2	T38.3X3	T38.3X4	T38.3X5	T38.3X6
alpha-adrenoreceptor	T44.6X1	T44.6X2	T44.6X3	T44.6X4	T44.6X5	T44.6X6	sulfonylurea	T38.3X1	T38.3X2	T38.3X3	T38.3X4	T38.3X5	T38.3X6
anticoagulant	T45.7X1	T45.7X2	T45.7X3	T45.7X4	T45.7X5	T45.7X6	Antidiarrheal drug NEC	T47.6X1	T47.6X2	T47.6X3	T47.6X4	T47.6X5	T47.6X6
beta-adrenoreceptor	T44.7X1	T44.7X2	T44.7X3	T44.7X4	T44.7X5	T44.7X6	absorbent	T47.6X1	T47.6X2	T47.6X3	T47.6X4	T47.6X5	T47.6X6
extrapyramidal NEC	T44.3X1	T44.3X2	T44.3X3	T44.3X4	T44.3X5	T44.3X6	Anti-D immunoglobulin (human)	T50.211	T50.212	T50.213	T50.214	T50.215	T50.216
folic acid	T45.1X1	T45.1X2	T45.1X3	T45.1X4	T45.1X5	T45.1X6	Antidiphtheria serum	T50.211	T50.212	T50.213	T50.214	T50.215	T50.216
H2 receptor	T47.0X1	T47.0X2	T47.0X3	T47.0X4	T47.0X5	T47.0X6	Antidiuretic hormone	T38.891	T38.892	T38.893	T38.894	T38.895	T38.896
heavy metal	T45.8X1	T45.8X2	T45.8X3	T45.8X4	T45.8X5	T45.8X6	Antidote NEC	T50.6X1	T50.6X2	T50.6X3	T50.6X4	T50.6X5	T50.6X6
narcotic analgesic	T50.7X1	T50.7X2	T50.7X3	T50.7X4	T50.7X5	T50.7X6	heavy metal	T45.8X1	T45.8X2	T45.8X3	T45.8X4	T45.8X5	T45.8X6
opiate	T50.7X1	T50.7X2	T50.7X3	T50.7X4	T50.7X5	T50.7X6	Antidysrhythmic NEC	T46.2X1	T46.2X2				

C02.4 Malignant neoplasm of lingual tonsil SL <i>EXCLUDES 2</i> malignant neoplasm of tonsil NOS (C09.9)	C07 Malignant neoplasm of parotid gland Use additional code to identify: alcohol abuse and dependence (F10.-) exposure to environmental tobacco smoke (Z77.22) exposure to tobacco smoke in the perinatal period (P96.81) history of tobacco dependence (Z87.891) occupational exposure to environmental tobacco smoke (Z57.31) tobacco dependence (F17.-) tobacco use (Z72.0)
C02.8 Malignant neoplasm of overlapping sites of tongue SL Malignant neoplasm of two or more contiguous sites of tongue	√4th C08 Malignant neoplasm of other and unspecified major salivary glands <i>INCLUDES</i> malignant neoplasm of salivary ducts Use additional code to identify: alcohol abuse and dependence (F10.-) exposure to environmental tobacco smoke (Z77.22) exposure to tobacco smoke in the perinatal period (P96.81) history of tobacco dependence (Z87.891) occupational exposure to environmental tobacco smoke (Z57.31) tobacco dependence (F17.-) tobacco use (Z72.0)
C02.9 Malignant neoplasm of tongue, unspecified SL	<i>EXCLUDES 1</i> malignant neoplasms of specified minor salivary glands which are classified according to their anatomical location <i>EXCLUDES 2</i> malignant neoplasms of minor salivary glands NOS (C06.9) malignant neoplasm of parotid gland (C07)
√4th C03 Malignant neoplasm of gum <i>INCLUDES</i> malignant neoplasm of alveolar (ridge) mucosa malignant neoplasm of gingiva Use additional code to identify: alcohol abuse and dependence (F10.-) history of tobacco dependence (Z87.891) tobacco dependence (F17.-) tobacco use (Z72.0) <i>EXCLUDES 2</i> malignant odontogenic neoplasms (C41.0-C41.1)	C08.0 Malignant neoplasm of submandibular gland SL Malignant neoplasm of submaxillary gland
C03.0 Malignant neoplasm of upper gum SL	C08.1 Malignant neoplasm of sublingual gland SL
C03.1 Malignant neoplasm of lower gum SL	C08.9 Malignant neoplasm of major salivary gland, unspecified SL Malignant neoplasm of salivary gland (major) NOS
C03.9 Malignant neoplasm of gum, unspecified SL	√4th C09 Malignant neoplasm of tonsil Use additional code to identify: alcohol abuse and dependence (F10.-) exposure to environmental tobacco smoke (Z77.22) exposure to tobacco smoke in the perinatal period (P96.81) history of tobacco dependence (Z87.891) occupational exposure to environmental tobacco smoke (Z57.31) tobacco dependence (F17.-) tobacco use (Z72.0) <i>EXCLUDES 2</i> malignant neoplasm of lingual tonsil (C02.4) malignant neoplasm of pharyngeal tonsil (C11.1)
√4th C04 Malignant neoplasm of floor of mouth Use additional code to identify: alcohol abuse and dependence (F10.-) history of tobacco dependence (Z87.891) tobacco dependence (F17.-) tobacco use (Z72.0)	C09.0 Malignant neoplasm of tonsillar fossa SL
C04.0 Malignant neoplasm of anterior floor of mouth SL Malignant neoplasm of anterior to the premolar-canine junction	C09.1 Malignant neoplasm of tonsillar pillar (anterior) (posterior) SL
C04.1 Malignant neoplasm of lateral floor of mouth SL	C09.8 Malignant neoplasm of overlapping sites of tonsil SL
C04.8 Malignant neoplasm of overlapping sites of floor of mouth SL	C09.9 Malignant neoplasm of tonsil, unspecified SL Malignant neoplasm of faucial tonsils Malignant neoplasm of palatine tonsils Malignant neoplasm of tonsil NOS
C04.9 Malignant neoplasm of floor of mouth, unspecified SL	√4th C10 Malignant neoplasm of oropharynx Use additional code to identify: alcohol abuse and dependence (F10.-) exposure to environmental tobacco smoke (Z77.22) exposure to tobacco smoke in the perinatal period (P96.81) history of tobacco dependence (Z87.891) occupational exposure to environmental tobacco smoke (Z57.31) tobacco dependence (F17.-) tobacco use (Z72.0) <i>EXCLUDES 2</i> malignant neoplasm of tonsil (C09.-) DEF: Oropharynx: Middle portion of pharynx (throat); communicates with the oral cavity, nasopharynx and laryngopharynx.
√4th C05 Malignant neoplasm of palate Use additional code to identify: alcohol abuse and dependence (F10.-) history of tobacco dependence (Z87.891) tobacco dependence (F17.-) tobacco use (Z72.0) <i>EXCLUDES 1</i> Kaposi's sarcoma of palate (C46.2)	C10.0 Malignant neoplasm of vallecula SL
C05.0 Malignant neoplasm of hard palate SL	C10.1 Malignant neoplasm of anterior surface of epiglottis SL Malignant neoplasm of epiglottis, free border [margin] Malignant neoplasm of glossoepiglottic fold(s) <i>EXCLUDES 2</i> malignant neoplasm of epiglottis (suprahoid portion) NOS (C32.1)
C05.1 Malignant neoplasm of soft palate SL <i>EXCLUDES 2</i> malignant neoplasm of nasopharyngeal surface of soft palate (C11.3)	C10.2 Malignant neoplasm of lateral wall of oropharynx SL
C05.2 Malignant neoplasm of uvula SL	C10.3 Malignant neoplasm of posterior wall of oropharynx SL
C05.8 Malignant neoplasm of overlapping sites of palate SL	C10.4 Malignant neoplasm of branchial cleft SL Malignant neoplasm of branchial cyst [site of neoplasm]
C05.9 Malignant neoplasm of palate, unspecified SL Malignant neoplasm of roof of mouth	C10.8 Malignant neoplasm of overlapping sites of oropharynx SL Malignant neoplasm of junctional region of oropharynx
√4th C06 Malignant neoplasm of other and unspecified parts of mouth Use additional code to identify: alcohol abuse and dependence (F10.-) history of tobacco dependence (Z87.891) tobacco dependence (F17.-) tobacco use (Z72.0)	C10.9 Malignant neoplasm of oropharynx, unspecified SL
C06.0 Malignant neoplasm of cheek mucosa SL Malignant neoplasm of buccal mucosa NOS Malignant neoplasm of internal cheek	
C06.1 Malignant neoplasm of vestibule of mouth SL Malignant neoplasm of buccal sulcus (upper) (lower) Malignant neoplasm of labial sulcus (upper) (lower)	
C06.2 Malignant neoplasm of retromolar area SL	
√5th C06.8 Malignant neoplasm of overlapping sites of other and unspecified parts of mouth	
C06.80 Malignant neoplasm of overlapping sites of unspecified parts of mouth SL	
C06.89 Malignant neoplasm of overlapping sites of other parts of mouth SL "book leaf" neoplasm [ventral surface of tongue and floor of mouth]	
C06.9 Malignant neoplasm of mouth, unspecified SL Malignant neoplasm of minor salivary gland, unspecified site Malignant neoplasm of oral cavity NOS	

- ✓4th** **G04 Encephalitis, myelitis and encephalomyelitis**

[INCLUDES] acute ascending myelitis
meningoencephalitis
meningomyelitis

[EXCLUDES 1] *encephalopathy NOS (G93.40)*

[EXCLUDES 2] *acute transverse myelitis (G37.3)*
alcoholic encephalopathy (G31.2)
multiple sclerosis (G35)
myalgic encephalomyelitis (G93.32)
subacute necrotizing myelitis (G37.4)
toxic encephalitis (G92.8)
toxic encephalopathy (G92.8)

DEF: Encephalitis: Inflammation of the brain, often caused by viral or bacterial infection.
DEF: Encephalomyelitis: Inflammatory disease, often viral in nature, that affects the brain and spinal cord.
DEF: Myelitis: Inflammation of the spinal cord.
- ✓5th** **G04.0 Acute disseminated encephalitis and encephalomyelitis (ADEM)**

[EXCLUDES 1] *acute necrotizing hemorrhagic encephalopathy (G04.3-)*
other noninfectious acute disseminated encephalomyelitis (noninfectious ADEM) (G04.81)

G04.00 Acute disseminated encephalitis and encephalomyelitis, unspecified ED CC
RIC Excl: 03 Non-traumatic brain injury

G04.01 Postinfectious acute disseminated encephalitis and encephalomyelitis (postinfectious ADEM) ED CC
[EXCLUDES 1] *post chickenpox encephalitis (B01.1)*
post measles encephalitis (B05.0)
post measles myelitis (B05.1)
RIC Excl: 03 Non-traumatic brain injury

G04.02 Postimmunization acute disseminated encephalitis, myelitis and encephalomyelitis ED
Encephalitis, post immunization
Encephalomyelitis, post immunization
Use additional code to identify the vaccine (T50.A-, T50.B-, T50.Z-)
- G04.1 Tropical spastic paraplegia**
- G04.2 Bacterial meningoencephalitis and meningomyelitis, not elsewhere classified** CC
RIC Excl: 03 Non-traumatic brain injury; 05 Non-traumatic spinal cord injury
- ✓5th** **G04.3 Acute necrotizing hemorrhagic encephalopathy**

[EXCLUDES 1] *acute disseminated encephalitis and encephalomyelitis (G04.0-)*

G04.30 Acute necrotizing hemorrhagic encephalopathy, unspecified ED CC
RIC Excl: 03 Non-traumatic brain injury

G04.31 Postinfectious acute necrotizing hemorrhagic encephalopathy ED CC
RIC Excl: 03 Non-traumatic brain injury

G04.32 Postimmunization acute necrotizing hemorrhagic encephalopathy ED
Use additional code to identify the vaccine (T50.A-, T50.B-, T50.Z-)

G04.39 Other acute necrotizing hemorrhagic encephalopathy ED CC
Code also underlying etiology, if applicable
RIC Excl: 03 Non-traumatic brain injury
- ✓5th** **G04.8 Other encephalitis, myelitis and encephalomyelitis**
Code also any associated seizure (G40.-, R56.9)

G04.81 Other encephalitis and encephalomyelitis ED CC
Noninfectious acute disseminated encephalomyelitis (noninfectious ADEM)
RIC Excl: 03 Non-traumatic brain injury

G04.82 Acute flaccid myelitis ED CC
[EXCLUDES 1] *transverse myelitis (G37.3)*
AHA: 2021,4Q,11
RIC Excl: 03 Non-traumatic brain injury

G04.89 Other myelitis ED CC
AHA: 2020,1Q,14
RIC Excl: 03 Non-traumatic brain injury

- ✓5th** **G04.9 Encephalitis, myelitis and encephalomyelitis, unspecified**

G04.90 Encephalitis and encephalomyelitis, unspecified ED CC
Ventriculitis (cerebral) NOS
RIC Excl: 03 Non-traumatic brain injury

G04.91 Myelitis, unspecified ED CC
RIC Excl: 03 Non-traumatic brain injury
- ✓4th** **G05 Encephalitis, myelitis and encephalomyelitis in diseases classified elsewhere**

Code first underlying disease, such as:
congenital toxoplasmosis encephalitis, myelitis and encephalomyelitis (P37.1)
cytomegaloviral encephalitis, myelitis and encephalomyelitis (B25.8)
encephalitis, myelitis and encephalomyelitis (in) systemic lupus erythematosus (M32.19)
eosinophilic meningoencephalitis (B83.2)
human immunodeficiency virus [HIV] disease (B20)
poliovirus (A80.-)
suppurative otitis media (H66.01-H66.4)
systemic lupus erythematosus (M32.19)
trichinellosis (B75)

[EXCLUDES 1] *adenoviral encephalitis, myelitis and encephalomyelitis (A85.1)*
encephalitis, myelitis and encephalomyelitis (in) measles (B05.0)
enteroviral encephalitis, myelitis and encephalomyelitis (A85.0)
herpesviral [herpes simplex] encephalitis, myelitis and encephalomyelitis (B00.4)
listerial encephalitis, myelitis and encephalomyelitis (A32.12)
meningococcal encephalitis, myelitis and encephalomyelitis (A39.81)
mumps encephalitis, myelitis and encephalomyelitis (B26.2)
postchickenpox encephalitis, myelitis and encephalomyelitis (B01.1-)
rubella encephalitis, myelitis and encephalomyelitis (B06.01)
toxoplasmosis encephalitis, myelitis and encephalomyelitis (B58.2)
zoster encephalitis, myelitis and encephalomyelitis (B02.0)
- G05.3 Encephalitis and encephalomyelitis in diseases classified elsewhere** RP ED
Meningoencephalitis in diseases classified elsewhere
Code first underlying disease
- G05.4 Myelitis in diseases classified elsewhere** RP ED CC
Meningomyelitis in diseases classified elsewhere
RIC Excl: 03 Non-traumatic brain injury
- ✓4th** **G06 Intracranial and intraspinal abscess and granuloma**

Use additional code (B95-B97) to identify infectious agent
DEF: Abscess: Circumscribed collection of pus resulting from bacteria, frequently associated with swelling and other signs of inflammation.
DEF: Granuloma: Abnormal, dense collections of cells forming a mass or nodule of chronically inflamed tissue with granulations that is usually associated with an infective process.

G06.0 Intracranial abscess and granuloma ED CC
Brain [any part] abscess (embolic)
Cerebellar abscess (embolic)
Cerebral abscess (embolic)
Intracranial epidural abscess or granuloma
Intracranial extradural abscess or granuloma
Intracranial subdural abscess or granuloma
Orogenic abscess (embolic)
[EXCLUDES 1] *tuberculous intracranial abscess and granuloma (A17.81)*
RIC Excl: 03 Non-traumatic brain injury

G06.1 Intraspinal abscess and granuloma ED CC
Abscess (embolic) of spinal cord [any part]
Intraspinal epidural abscess or granuloma
Intraspinal extradural abscess or granuloma
Intraspinal subdural abscess or granuloma
[EXCLUDES 1] *tuberculous intraspinal abscess and granuloma (A17.81)*
RIC Excl: 03 Non-traumatic brain injury

G06.2 Extradural and subdural abscess, unspecified CC
RIC Excl: 03 Non-traumatic brain injury

Chapter 9. Diseases of the Circulatory System (I00–I99)

Chapter-specific Guidelines with Coding Examples

The chapter-specific guidelines from the ICD-10-CM Official Guidelines for Coding and Reporting have been provided below. Along with these guidelines are coding examples, contained in the shaded boxes, that have been developed to help illustrate the coding and/or sequencing guidance found in these guidelines.

a. Hypertension

The classification presumes a causal relationship between hypertension and heart involvement and between hypertension and kidney involvement, as the two conditions are linked by the term “with” in the Alphabetic Index. These conditions should be coded as related even in the absence of provider documentation explicitly linking them, unless the documentation clearly states the conditions are unrelated.

For hypertension and conditions not specifically linked by relational terms such as “with,” “associated with” or “due to” in the classification, provider documentation must link the conditions in order to code them as related.

1) Hypertension with heart disease

Hypertension with heart conditions classified to I50.- or I51.4–I51.7, I51.89, I51.9, are assigned to a code from category I11, Hypertensive heart disease. Use additional code(s) from category I50, Heart failure, to identify the type(s) of heart failure in those patients with heart failure. The same heart conditions (I50.-, I51.4–I51.7, I51.89, I51.9) with hypertension are coded separately if the provider has documented they are unrelated to the hypertension. Sequence according to the circumstances of the admission/encounter.

Patient is admitted in left heart failure. Patient also has a history of hypertension managed by medication.

I11.0 Hypertensive heart disease with heart failure

I50.1 Left ventricular failure, unspecified

Explanation: Without a diagnostic statement to the contrary, hypertension and heart failure have an assumed causal relationship, and a combination code should be used. An additional code to identify the type of heart failure (I50.-) should also be provided.

2) Hypertensive chronic kidney disease

Assign codes from category I12, Hypertensive chronic kidney disease, when both hypertension and a condition classifiable to category N18, Chronic kidney disease (CKD), are present. CKD should not be coded as hypertensive if the provider indicates the CKD is not related to the hypertension.

The appropriate code from category N18 should be used as a secondary code with a code from category I12 to identify the stage of chronic kidney disease.

See Section I.C.14. Chronic kidney disease.

If a patient has hypertensive chronic kidney disease and acute renal failure, the acute renal failure should also be coded. Sequence according to the circumstances of the admission/encounter.

Patient is admitted with stage IV chronic kidney disease (CKD) due to polycystic kidney disease. Patient also is on lisinopril for hypertension.

N18.4 Chronic kidney disease, stage 4 (severe)

Q61.3 Polycystic kidney, unspecified

I10 Essential (primary) hypertension

Explanation: A combination code describing a relationship between hypertension and CKD is not used because the physician documentation identifies the polycystic kidney disease as the cause for the CKD.

3) Hypertensive heart and chronic kidney disease

Assign codes from combination category I13, Hypertensive heart and chronic kidney disease, when there is hypertension with both heart and kidney involvement. If heart failure is present, assign an additional code from category I50 to identify the type of heart failure.

The appropriate code from category N18, Chronic kidney disease, should be used as a secondary code with a code from category I13 to identify the stage of chronic kidney disease.

See Section I.C.14. Chronic kidney disease.

The codes in category I13, Hypertensive heart and chronic kidney disease, are combination codes that include hypertension, heart disease and chronic kidney disease. The Includes note at I13 specifies that the

conditions included at I11 and I12 are included together in I13. If a patient has hypertension, heart disease and chronic kidney disease, then a code from I13 should be used, not individual codes for hypertension, heart disease and chronic kidney disease, or codes from I11 or I12.

For patients with both acute renal failure and chronic kidney disease, the acute renal failure should also be coded. Sequence according to the circumstances of the admission/encounter.

Hypertensive heart and kidney disease with congestive heart failure and stage 2 chronic kidney disease

I13.0 Hypertensive heart and chronic kidney disease with heart failure and stage 1 through stage 4 chronic kidney disease, or unspecified chronic kidney disease

I50.9 Heart failure, unspecified

N18.2 Chronic kidney disease, stage 2 (mild)

Explanation: Combination codes in category I13 are used to report conditions classifiable to both categories I11 and I12. Do not report conditions classifiable to I11 and I12 separately. Use additional codes to report type of heart failure and stage of CKD.

4) Hypertensive cerebrovascular disease

For hypertensive cerebrovascular disease, first assign the appropriate code from categories I60–I69, followed by the appropriate hypertension code.

5) Hypertensive retinopathy

Subcategory H35.0, Background retinopathy and retinal vascular changes, should be used along with a code from categories I10–I15, in the Hypertensive diseases section, to include the systemic hypertension. The sequencing is based on the reason for the encounter.

Hypertensive retinopathy of the right eye

H35.031 Hypertensive retinopathy, right eye

I10 Essential (primary) hypertension

Explanation: Hypertensive retinopathy requires two codes: the appropriate subcategory H35.0 code and a code for the hypertension.

6) Hypertension, secondary

Secondary hypertension is due to an underlying condition. Two codes are required: one to identify the underlying etiology and one from category I15 to identify the hypertension. Sequencing of codes is determined by the reason for admission/encounter.

Renovascular hypertension due to renal artery atherosclerosis

I15.0 Renovascular hypertension

I70.1 Atherosclerosis of renal artery

Explanation: Secondary hypertension requires two codes: a code to identify the etiology and the appropriate I15 code.

7) Hypertension, transient

Assign code R03.0, Elevated blood pressure reading without diagnosis of hypertension, unless patient has an established diagnosis of hypertension. Assign code O13.-, Gestational [pregnancy-induced] hypertension without significant proteinuria, or O14.-, Pre-eclampsia, for transient hypertension of pregnancy.

8) Hypertension, controlled

This diagnostic statement usually refers to an existing state of hypertension under control by therapy. Assign the appropriate code from categories I10–I15, Hypertensive diseases.

9) Hypertension, uncontrolled

Uncontrolled hypertension may refer to untreated hypertension or hypertension not responding to current therapeutic regimen. In either case, assign the appropriate code from categories I10–I15, Hypertensive diseases.

10) Hypertensive crisis

Assign a code from category I16, Hypertensive crisis, for documented hypertensive urgency, hypertensive emergency or unspecified hypertensive crisis. Code also any identified hypertensive disease (I10–I15). The sequencing is based on the reason for the encounter.

	L97.908	Non-pressure chronic ulcer of unspecified part of unspecified lower leg with other specified severity	RP ED
	L97.909	Non-pressure chronic ulcer of unspecified part of unspecified lower leg with unspecified severity	RP ED
√ 6th	L97.91	Non-pressure chronic ulcer of unspecified part of right lower leg	
	L97.911	Non-pressure chronic ulcer of unspecified part of right lower leg limited to breakdown of skin	ED
	L97.912	Non-pressure chronic ulcer of unspecified part of right lower leg with fat layer exposed	ED
	L97.913	Non-pressure chronic ulcer of unspecified part of right lower leg with necrosis of muscle	ED
	L97.914	Non-pressure chronic ulcer of unspecified part of right lower leg with necrosis of bone	ED
	L97.915	Non-pressure chronic ulcer of unspecified part of right lower leg with muscle involvement without evidence of necrosis	ED
	L97.916	Non-pressure chronic ulcer of unspecified part of right lower leg with bone involvement without evidence of necrosis	ED
	L97.918	Non-pressure chronic ulcer of unspecified part of right lower leg with other specified severity	ED
	L97.919	Non-pressure chronic ulcer of unspecified part of right lower leg with unspecified severity	ED
√ 6th	L97.92	Non-pressure chronic ulcer of unspecified part of left lower leg	
	L97.921	Non-pressure chronic ulcer of unspecified part of left lower leg limited to breakdown of skin	ED
	L97.922	Non-pressure chronic ulcer of unspecified part of left lower leg with fat layer exposed	ED
	L97.923	Non-pressure chronic ulcer of unspecified part of left lower leg with necrosis of muscle	ED
	L97.924	Non-pressure chronic ulcer of unspecified part of left lower leg with necrosis of bone	ED
	L97.925	Non-pressure chronic ulcer of unspecified part of left lower leg with muscle involvement without evidence of necrosis	ED
	L97.926	Non-pressure chronic ulcer of unspecified part of left lower leg with bone involvement without evidence of necrosis	ED
	L97.928	Non-pressure chronic ulcer of unspecified part of left lower leg with other specified severity	ED
	L97.929	Non-pressure chronic ulcer of unspecified part of left lower leg with unspecified severity	ED
√ 4th	L98	Other disorders of skin and subcutaneous tissue, not elsewhere classified	
	L98.0	Pyogenic granuloma	RP
		EXCLUDES 2 pyogenic granuloma of gingiva (K06.8) pyogenic granuloma of maxillary alveolar ridge (K04.5) pyogenic granuloma of oral mucosa (K13.4)	
		DEF: Solitary polypoid capillary hemangioma often associated with local irritation, trauma, and superimposed inflammation. Located on the skin and gingival or oral mucosa, they bleed easily and may ulcerate and form crusted sores.	
	L98.1	Factitial dermatitis	RP
		Neurotic excoriation	
		EXCLUDES 1 excoriation (skin-picking) disorder (F42.4)	
		AHA: 2016,4Q,15	
		DEF: Self-inflicted skin lesions to satisfy an unconscious psychological or emotional need. Methods used to injure the skin include deep excoriations with a sharp instrument, scarification with a knife, or the application of caustic chemicals and burning, sometimes with a cigarette.	
	L98.2	Febrile neutrophilic dermatosis [Sweet]	RP
	L98.3	Eosinophilic cellulitis [Wells]	RP
√ 5th	L98.4	Non-pressure chronic ulcer of skin, not elsewhere classified	
		Chronic ulcer of skin NOS	
		Tropical ulcer NOS	
		Ulcer of skin NOS	
		EXCLUDES 2 gangrene (I96) pressure ulcer (pressure area) (L89.-) skin infections (L00–L08) specific infections classified to A00–B99 ulcer of lower limb NEC (L97.-) varicose ulcer (I83.0–I83.93)	
		AHA: 2017,4Q,17	
		TIP: The depth and/or severity of a diagnosed nonpressure ulcer can be determined based on medical record documentation from clinicians who are not the patient's provider.	
√ 6th	L98.41	Non-pressure chronic ulcer of buttock	
	L98.411	Non-pressure chronic ulcer of buttock limited to breakdown of skin	ED
	L98.412	Non-pressure chronic ulcer of buttock with fat layer exposed	ED
	L98.413	Non-pressure chronic ulcer of buttock with necrosis of muscle	ED
	L98.414	Non-pressure chronic ulcer of buttock with necrosis of bone	ED
	L98.415	Non-pressure chronic ulcer of buttock with muscle involvement without evidence of necrosis	ED
	L98.416	Non-pressure chronic ulcer of buttock with bone involvement without evidence of necrosis	ED
	L98.418	Non-pressure chronic ulcer of buttock with other specified severity	ED
	L98.419	Non-pressure chronic ulcer of buttock with unspecified severity	ED
√ 6th	L98.42	Non-pressure chronic ulcer of back	
	L98.421	Non-pressure chronic ulcer of back limited to breakdown of skin	ED
	L98.422	Non-pressure chronic ulcer of back with fat layer exposed	ED
	L98.423	Non-pressure chronic ulcer of back with necrosis of muscle	ED
	L98.424	Non-pressure chronic ulcer of back with necrosis of bone	ED
	L98.425	Non-pressure chronic ulcer of back with muscle involvement without evidence of necrosis	ED
	L98.426	Non-pressure chronic ulcer of back with bone involvement without evidence of necrosis	ED
	L98.428	Non-pressure chronic ulcer of back with other specified severity	ED
	L98.429	Non-pressure chronic ulcer of back with unspecified severity	ED
√ 6th	L98.49	Non-pressure chronic ulcer of skin of other sites	
		Non-pressure chronic ulcer of skin NOS	
	L98.491	Non-pressure chronic ulcer of skin of other sites limited to breakdown of skin	ED
	L98.492	Non-pressure chronic ulcer of skin of other sites with fat layer exposed	ED
	L98.493	Non-pressure chronic ulcer of skin of other sites with necrosis of muscle	ED
	L98.494	Non-pressure chronic ulcer of skin of other sites with necrosis of bone	ED
	L98.495	Non-pressure chronic ulcer of skin of other sites with muscle involvement without evidence of necrosis	ED
	L98.496	Non-pressure chronic ulcer of skin of other sites with bone involvement without evidence of necrosis	ED
	L98.498	Non-pressure chronic ulcer of skin of other sites with other specified severity	ED
	L98.499	Non-pressure chronic ulcer of skin of other sites with unspecified severity	ED

- Q18.1 Preauricular sinus and cyst** RP
Cervicoaural fistula
Fistula of auricle, congenital
- Q18.2 Other branchial cleft malformations** RP
Branchial cleft malformation NOS
Cervical auricle
Otocephaly
- Q18.3 Webbing of neck** RP
Pterygium colli
DEF: Congenital malformation characterized by a thick, triangular skinfold that stretches from the lateral side of the neck across the shoulder. It is associated with genetic conditions such as Turner's and Noonan's syndromes.
- Q18.4 Macrostomia** RP
DEF: Rare congenital craniofacial bilateral or unilateral anomaly of the mouth due to malformed maxillary and mandibular processes. It results in an abnormally large mouth extending toward the ear.
- Q18.5 Microstomia** RP
- Q18.6 Macrocheilia** RP
Hypertrophy of lip, congenital
- Q18.7 Microcheilia** RP
- Q18.8 Other specified congenital malformations of face and neck** RP
Medial cyst of face and neck
Medial fistula of face and neck
Medial sinus of face and neck
- Q18.9 Congenital malformation of face and neck, unspecified** RP
Congenital anomaly NOS of face and neck

Congenital malformations of the circulatory system (Q20–Q28)

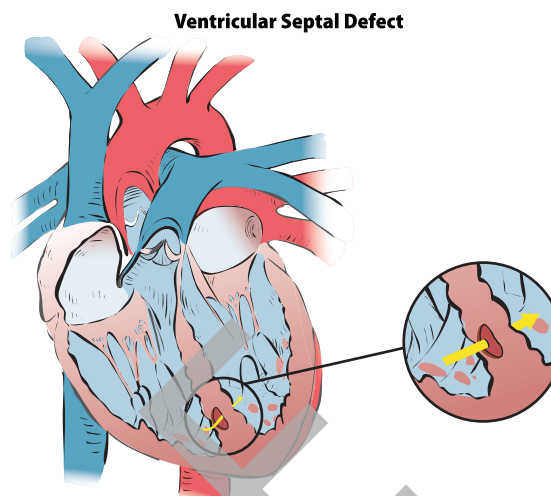
- Q20 Congenital malformations of cardiac chambers and connections** ✓4th
EXCLUDES 1 dextrocardia with situs inversus (Q89.3)
mirror-image atrial arrangement with situs inversus (Q89.3)
- Q20.0 Common arterial trunk**
Persistent truncus arteriosus
EXCLUDES 1 aortic septal defect (Q21.4)
- Q20.1 Double outlet right ventricle**
Taussig-Bing syndrome
- Q20.2 Double outlet left ventricle**
- Q20.3 Discordant ventriculoarterial connection**
Dextrotransposition of aorta
Transposition of great vessels (complete)
- Q20.4 Double inlet ventricle**
Common ventricle
Cor triloculare batriatum
Single ventricle
- Q20.5 Discordant atrioventricular connection**
Corrected transposition
Levotransposition
Ventricular inversion
- Q20.6 Isomerism of atrial appendages**
Isomerism of atrial appendages with asplenia or polysplenia
- Q20.8 Other congenital malformations of cardiac chambers and connections**
Cor binoculare
- Q20.9 Congenital malformation of cardiac chambers and connections, unspecified**

Q21 Congenital malformations of cardiac septa

EXCLUDES 1 acquired cardiac septal defect (I51.0)

Q21.0 Ventricular septal defect

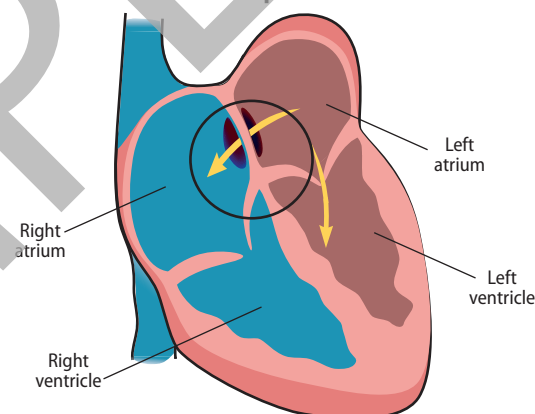
Roger's disease



Q21.1 Atrial septal defect

EXCLUDES 2 ostium primum atrial septal defect (type I) (Q21.20)
AHA: 2022,4Q,39-40

Atrial Septal Defect



- Q21.10 Atrial septal defect, unspecified**
- Q21.11 Secundum atrial septal defect**
Fenestrated atrial septum
Patent or persistent ostium secundum defect (type II)
- Q21.12 Patent foramen ovale**
Persistent foramen ovale
- Q21.13 Coronary sinus atrial septal defect**
Coronary sinus defect
Unroofed coronary sinus
- Q21.14 Superior sinus venosus atrial septal defect**
Superior vena cava type atrial septal defect
- Q21.15 Inferior sinus venosus atrial septal defect**
Inferior vena cava type atrial septal defect
- Q21.16 Sinus venosus atrial septal defect, unspecified**
Sinus venosus defect, NOS
- Q21.19 Other specified atrial septal defect**
Common atrium
Other specified atrial septal abnormality

Appendix D: Skilled Nursing Facility Patient-Driven Payment Model

Skilled Nursing Facility Patient-Driven Payment Model

Payment Calculation Under PDPM

Payment under the Skilled Nursing Facility Patient-Driven Payment Model (PDPM) is based on the sum of six payment components. These include the following:

- Physical therapy
- Occupational therapy
- Speech-language pathology
- Nursing
- Nontherapy ancillary
- Noncase-mix

The first five components are case-mix adjusted to capture the varied needs and characteristics of a resident's care. The sixth component is a noncase-mix component that covers utilization of resources that do not fluctuate according to patient characteristics.

The payment for each component is calculated by multiplying the case-mix index (CMI) for the resident's group, first by the component federal base payment rate, then by the specific day in the variable per diem adjustment schedule, when applicable. Additionally, for residents with HIV/AIDS indicated on their claim, the nursing portion of payment is multiplied by 1.18. These payments are then added, along with the noncase-mix component payment rate, to create a resident's total SNF PPS per diem rate under the PDPM.

Functional and Cognitive Scoring Under PDPM

Functional status, the ability to conduct certain activities, and cognitive function, the presence or absence of any sort of impairment in cognition, are two important patient characteristics for assessing the care needs of a resident. In the PDPM, this information is calculated using data from section GG of the Minimum Data Set (MDS) 3.0 which offers standardized, comprehensive measures of functional status and therapy needs. Functional scores are calculated for the physical therapy, occupational therapy, and nursing components.

Cognitive scores are used in the calculation of the SLP component. The PDPM Cognitive Score is based on the Cognitive Function Scale (CFS), which combines scores from a Brief Interview for Mental Status (BIMS) score and Cognitive Performance Scale (CPS) score.

Physical Therapy and Occupational Therapy Components

Both the physical therapy (PT) and occupational therapy (OT) components use a resident's PDPM clinical category and the resident's functional status to assign a resident to a PT/OT case-mix group (CMG).

PDPM Clinical Categories

SNF residents are classified based on the primary diagnosis for the SNF stay, using item I0020 on the MDS 3.0. The clinical classification may then be adjusted when the resident received a surgical intervention during the preceding hospital stay associated with that diagnosis. The provider must indicate the type of surgical procedure performed by selecting, as necessary, a surgical procedure category within item J2100 on the MDS 3.0. If the resident did not receive a related surgical procedure during the prior hospital stay, the resident may be categorized into a nonsurgical clinical category. Based on the provisions outlined above, the resident is classified into one of the following 10 clinical categories:

Surgical category:

- Major Joint Replacement or Spinal Surgery
- Nonorthopaedic Surgery
- Orthopedic Surgery (Except Major Joint Replacement or Spinal Surgery)

Nonsurgical category:

- Acute Neurologic
- Nonsurgical Orthopedic/Musculoskeletal
- Medical Management
- Acute Infections
- Cancer
- Pulmonary
- Cardiovascular and Coagulations

Collapsed Clinical Categories for PT and OT

Once CMS identified the default clinical categories as those being generally predictive of resource utilization in a SNF, they then undertook the necessary work to identify those categories predictive of PT and OT costs specifically. CMS found that the 10 inpatient clinical categories could be collapsed into four clinical categories, which predict varying degrees of PT and OT costs (see table 1).

Table 1. Collapsed Clinical Categories for PT and OT Classification

PDPM Clinical Category	Collapsed PT and OT Clinical Category
Major Joint Replacement or Spinal Surgery	Major Joint Replacement or Spinal Surgery
Non-Orthopedic Surgery Acute Neurologic	Non-Orthopedic Surgery and Acute Neurologic
Non-Surgical Orthopedic/Musculoskeletal Orthopedic Surgery (Except Major Joint Replacement or Spinal Surgery)	Other Orthopedic
Medical Management Acute Infections Cancer Pulmonary Cardiovascular and Coagulations	Medical Management

Functional Score for PT and OT

Regression analyses demonstrated that the resident's functional status is also predictive of PT and OT costs in addition to the resident's initial clinical categorization. CMS constructed a new functional score for PT and OT payment based on the newer, IMPACT Act compliant items from section GG of the MDS 3.0 (see table 2).

Table 2. Section GG Items Included in PT and OT Functional Measure

Section GG Item Number	Section GG Item Description
GG0130A	Self-care: Eating
GG0130B	Self-care: Oral hygiene
GG0130C	Self-care: Toileting hygiene
GG0170B	Mobility: Sit to lying
GG0170C	Mobility: Lying to sitting on side of bed
GG0170D	Mobility: Sit to stand
GG0170E	Mobility: Chair/bed-to-chair transfer
GG1070F	Mobility: Toilet transfer
GG0170I	Mobility: Walk 10 feet
GG0170J	Mobility: Walk 50 feet with 2 turns
GG0170K	Mobility: Walk 150 feet

PT and OT Case-Mix Groups

Under the PDPM, all residents are classified into one and only one of the 16 PT and OT case-mix groups for each of the two components.

These groups classify residents based on the two resident characteristics shown to be most predictive of PT and OT utilization: Clinical category and function score. CMS believes that these PT and OT case-mix groups better reflect relative resource use of clinically relevant resident subpopulations and therefore provide for more appropriate payment under the SNF PPS.

PT and OT case-mix classification groups:

TA, TB, TC, TD, TE, TF, TG, TH, TI, TJ, TK, TL, TM, TN, TO, TP

Speech-Language Pathology Component

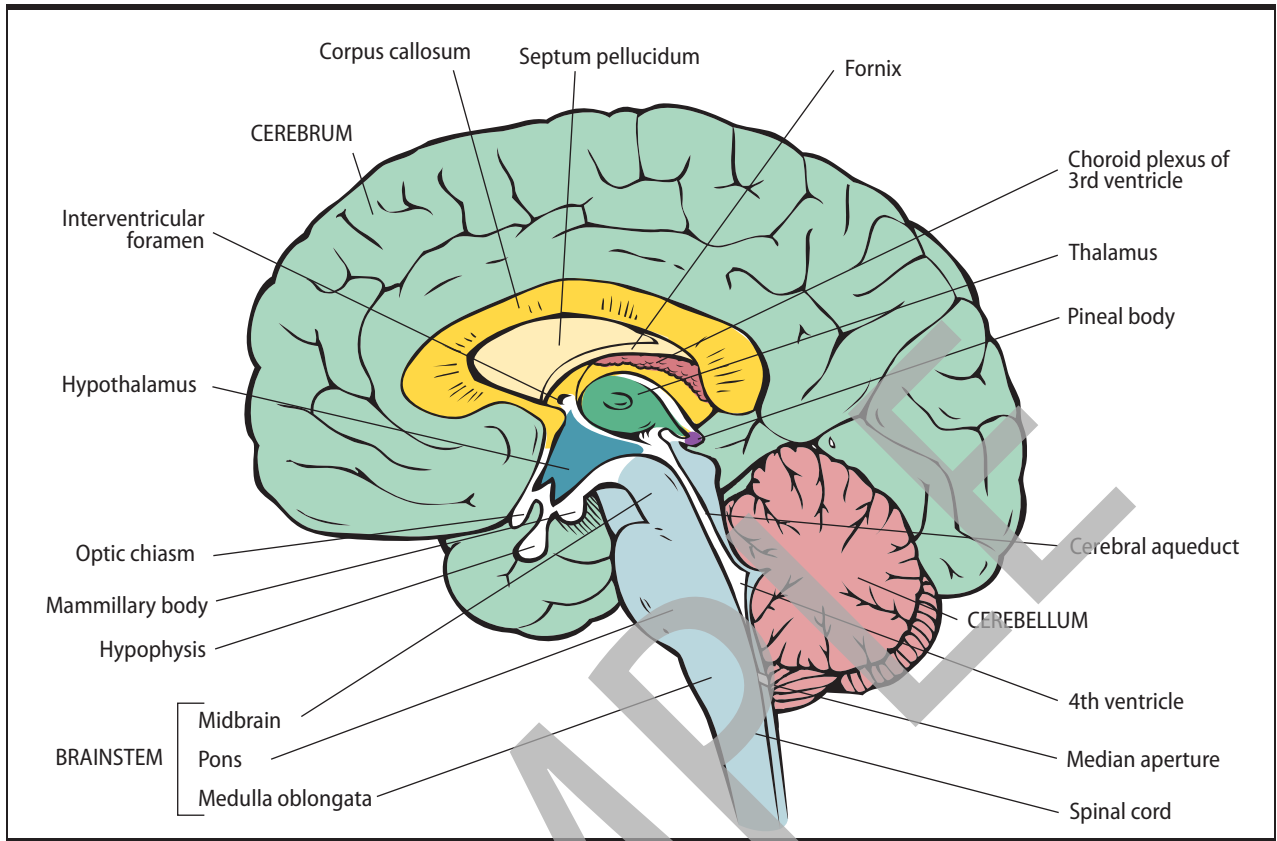
The speech-language pathology (SLP) component uses the resident's PDPM clinical category, cognitive function, the presence of an SLP-related comorbidity, and the presence of a swallowing disorder or mechanically altered diet to assign a resident to an SLP CMG.

PDPM Clinical Categories

CMS found only one clinical category predictive of increased SLP costs; the above criteria can be captured only if a resident is classified to the Acute Neurologic clinical category.

Chapter 6. Diseases of the Nervous System (G00–G99)

Brain



Cranial Nerves

