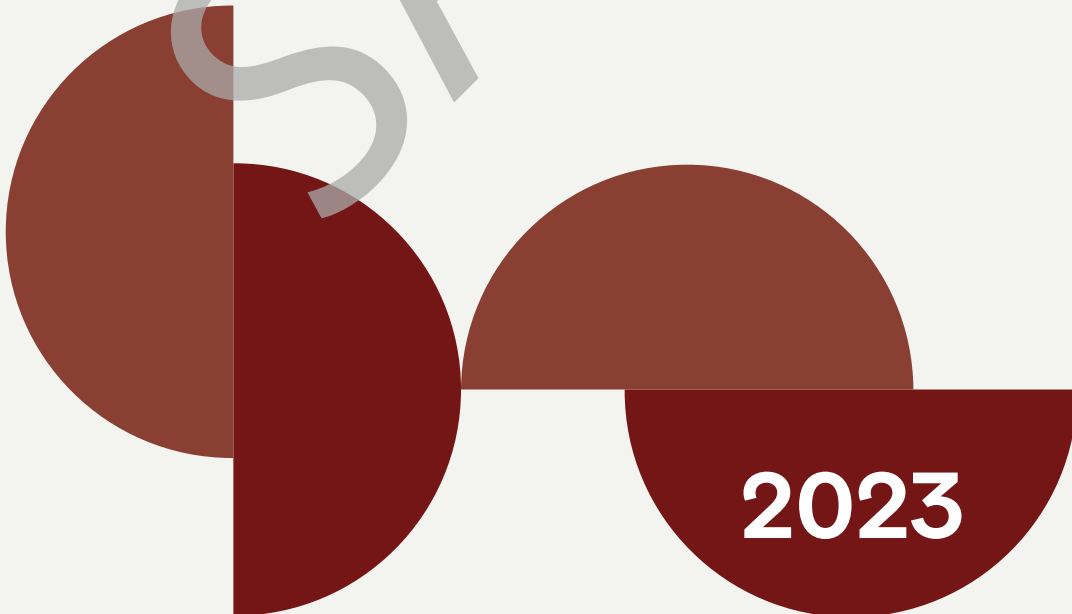


**Optum**

# Dental Customized Fee Analyzer

Fee information for your area

SAMPLE



**2023**

---

# Dental Customized Fee Analyzer

*Dental fee information for your area*

---

**CUSTOMIZED REPORT FOR:**

**DCFA Sample**

**Oral Maxillofacial Surgery (OMS) and Dental**

SAMPLE

---

# Contents

---

Introduction ..... 1

Using the *Analyzer* ..... 11

*Analyzer* Worksheets ..... 17

Professional & Technical Splits of Global Services ..... 27

Anesthesia Units, Follow-up Days, & Surgical Assistants ..... 31

Fee Data ..... 37

# Using the *Analyzer*

In the introduction, a number of applications were listed to illustrate ways that the *Analyzer* data might be used. In this section some of these applications are described in more depth. However, before beginning this analysis and adjusting fees, consider the following:

1. How will the new fees compare with what payers are willing to reimburse?
2. How will patients react to a change in charges?
3. Do the new fees accurately reflect the cost and worth of services?
4. Realize that reimbursement may be restricted by Preferred Provider Organization (PPO) and Health Maintenance Organization (HMO) contracts, as well as Medicare and workers' compensation fee schedules.
5. Because the percentiles in the *Analyzer* are based on a Geozip (the first three digits or groups of the first three digits of ZIP codes), assess how the practice's charging patterns relate to others in this area.

## **Initial Comparison of Current Fees to Area Fees**

Initially, compare a few most frequently reported services to get an idea of how current fees compare to others in the area. Compare the data to all seven percentiles or, initially, select only two or three percentiles.

### **Step One**

Select procedure codes for all types of services performed, including dental, evaluation and management, surgery, radiology, laboratory, and medicine.

### **Step Two**

Using a spreadsheet, list the following items in separate columns:

Column 1	Code
Column 2	Current fee
Column 3	Medicare allowable if appropriate
Columns 4–10	<i>Analyzer</i> fees at the 50th, 60th, 75th, 80th, 85th, 90th and 95th percentiles

# Professional & Technical Splits of Global Services

The Table of Professional & Technical Splits of Global Services is specific to CPT and is provided to help determine the professional and technical component amounts from the global fees listed in the *Analyzer*. The PC/TC percentages in the following table have been used to determine the amounts for those services with modifiers in the MOD column: G (global fee), TC (technical component), and 26 (professional component).

The fee data in the *Analyzer* displays percentiles for professional and technical components based on data sources including FAIR Health. These data are effective as of November 2020 and are subject to change. **This information is intended only as a guideline and should not be interpreted as absolutely representative of PC/TC splits prevalent in a given geographic area.** Variations may occur in certain geographic areas due to local billing patterns, changing technologies, sophistication and expense of equipment, and site of service. If you wish to apply different PC/TC splits to the data, instructions are included in the section “To Determine a PC/TC Split.”

## **Global Service Components**

A global service is one in which the health care professional provides the entire service, including equipment, supplies, technical personnel, and the provider’s professional services. The global service can then be divided into professional and technical components, expressed as percentages of the global amount.

## **Professional Component**

The professional component represents all of the health care professional’s work in providing the service. It encompasses the examination of the patient, when indicated, the performance and/or supervision of the procedure, and consultation with a referring health care professional when appropriate. Costs for education, malpractice insurance, and other expenses incident to maintaining a practice are also included in the professional component.

The professional component of the global service is listed in the Table of Professional & Technical Splits of Global Services as PC. The professional component is identified with modifier 26 in the *Analyzer* data. The CPT book includes modifier 26 to identify the physician component of a global service for billing purposes. Guidelines for using this modifier are listed in appendix A of the CPT book.

Code	MOD	Sub Description	Medicare BR	Area Allowable	Area 50th	Area 60th	Area 75th	Area 80th	Area 85th	Area 90th	Area 95th
D4212		GINGIVECT/PLSTY FOR ACCESS RESTORATION PER TOOTH			167	183	211	229	257	291	322
D4230		ANAT CROWN EXP 4/> CONTIGUOUS TEETH PER QUAD			657	719	830	900	1,012	1,144	1,267
D4231		ANATOMICAL CROWN EXPOSURE 1-3 TEETH PER QUADRANT			313	342	395	429	482	545	603
D4240		GINGL FLP PROC 4/> CONTIG/TOOTH BOUND SPACE-QUAD			595	650	751	815	916	1,035	1,146
D4241		GINGL FLP PROC 1-3 CONTIG/TOOTH BOUND SPACE-QUAD			344	377	435	472	530	599	663
D4245		APICALLY POSITIONED FLAP			438	479	553	600	675	763	844
D4249		CLINICAL CROWN LENGTHENING - HARD TISSUE			652	713	823	893	1,004	1,135	1,256
D4260		OSSEOUS SURG 4/> CNTIG TEETH QUAD			991	1,084	1,251	1,358	1,526	1,725	1,910
D4261		OSSEOUS SURG 1-3 CNTIG TEETH QUAD			532	582	672	729	819	926	1,025
D4263		BONE REPLACEMENT GRAFT - FIRST SITE IN QUADRANT			355	388	448	486	546	617	684
D4264		BONE REPLACEMENT GRAFT - EA ADD SITE QUADRANT			303	331	382	414	466	527	583
D4265		BIOLOGIC MATERIALS AID SOFT&OSSEOUS TISSUE REGEN	Y		0	0	0	0	0	0	0
D4266		GUID TISSUE REGEN - RESORBABLE BARRIER PER SITE			365	399	461	500	562	636	704
D4267		GUID TISSUE REGEN - NONRESORB BARRIER PER SITE			470	513	593	643	723	817	905
D4268		SURGICAL REVISION PROCEDURE PER TOOTH	Y		0	0	0	0	0	0	0
D4270		PEDICLE SOFT TISSUE GRAFT PROCEDURE			704	770	889	965	1,085	1,226	1,357
D4273		AUTOGNS CONECTIVE TISSUE GRFT 1ST TOOTH/IMPLANT			861	941	1,087	1,179	1,326	1,498	1,659
D4274		MESIAL OR DISTAL WEDGE PROCEDURE			488	534	616	669	752	850	941
D4275		NONAUTGNS CONECTV TISSUE GRFT 1ST TOOTH/IMPLANT			647	707	817	886	996	1,126	1,246
D4276		COMB CNCTIVE TISSUE&DBL PEDICLE GRAFT PER TOOTH			965	1,056	1,219	1,322	1,486	1,680	1,860
D4277		FREE SOFT TISSUE GRAFT, 1ST TOOTH/ IMPLANT			730	799	922	1,000	1,125	1,271	1,407

M1120-D0121-C0121

Code	MOD	Sub Description	Medicare BR	Area Allowable	Area 50th	Area 60th	Area 75th	Area 80th	Area 85th	Area 90th	Area 95th
D6600		RETAINER INLAY - PORCELAIN/CERAMIC TWO SURFACES			703	731	790	798	821	838	869
D6601		RETAINER INLAY - PORC/CERAMIC 3 OR MORE SURFACES			737	767	828	837	861	879	911
D6602		RETAINER INLAY CAST HIGH NOBLE METAL 2 SURFACES			751	782	844	852	877	896	928
D6603		RETAINR INLAY - CAST HI NOBLE METAL 3/MORE SURFS			826	860	929	938	965	985	1,021
D6604		RETAINER INLAY - CAST PREDOM BASE METAL 2 SURFS			736	766	827	835	859	878	910
D6605		RTAINER INLAY - CAST PREDOM BASE MTL 3/MORE SURFS			780	812	877	885	911	930	964
D6606		RETAINER INLAY - CAST NOBLE METAL TWO SURFACES			725	754	814	822	846	864	895
D6607		RETNR INLAY CAST NOBLE METAL 3 OR MORE SURFACES			804	836	903	912	938	958	993
D6608		RETAINER ONLAY - PORCELAIN/CERAMIC TWO SURFACES			764	795	859	867	892	911	944
D6609		RETAINER ONLAY PORCELAIN/CERAMIC 3/MORE SURFACES			797	830	896	905	931	951	985
D6610		RETAINER ONLAY - HIGH NOBLE METAL TWO SURFACES			810	843	910	919	946	966	1,001
D6611		RETAINER ONLAY HIGH NOBLE METAL 3/MORE SURFACES			887	922	996	1,006	1,035	1,057	1,095
D6612		RETAINER ONLAY CAST PREDOM BASE METAL 2 SURFACES			806	839	906	915	941	961	996
D6613		RETNR ONLAY CAST PREDOM BASE METAL 3/MORE SURFS			843	876	947	956	983	1,004	1,041
D6614		RETAINER ONLAY - CAST NOBLE METAL TWO SURFACES			789	821	886	895	921	940	975
D6615		RETNR ONLAY CAST NOBLE METAL 3 OR MORE SURFACES			820	853	921	930	957	978	1,013
D6624		RETAINER INLAY - TITANIUM			751	782	844	852	877	896	928
D6634		RETAINER ONLAY - TITANIUM			789	821	886	895	921	940	975
D6710		RETAINER CROWN - INDIRECT RESIN BASED COMPOSITE			805	837	904	913	940	960	995
D6720		RETAINER CROWN - RESIN WITH HIGH NOBLE METAL			939	977	1,055	1,066	1,096	1,120	1,160
D6721		RETAINER CROWN - RESIN WITH PREDOM BASE METAL			891	927	1,001	1,011	1,040	1,062	1,101

M1120-D0121-C0121